

## TABLE OF CONTENTS

### = WOOD & FINISHING PRODUCTS =

Core Wood .....	G2 - G5
Spruce Tops .....	G6
Maple Backs .....	G7
Neck Blocks, Neck Grafting Blocks, Necks with Scrolls .....	G8
Finished Necks, Ribs .....	G9
Linings, Blocks, Garlands, Purfling .....	G10
Peghole Bushings, Cork, Bass Bars, Soundposts .....	G11
Fingerboards .....	G12
Nuts, Saddles .....	G13
Core Shop Apron .....	G13
"Old Wood" Finishing Products .....	G14 - G15
Finishing Information .....	G17 - G18
Balsamic Oils & Varnishes .....	G18
Varnishes & Solvents .....	G19
Varnish Color Reference .....	G20
Resins For Making Varnish .....	G21
Natural Dyes For Making Varnish .....	G21
Aniline Dyes .....	G22
Nitro Sticks .....	G22
Polishes, Cleaners, Miscellaneous .....	G23
Brushes .....	G24
Updates (electronic version only) .....	G25



Use QR code to open this  
section online!



**Alpentonholz Pahler** is a personally managed tonewood company with many years of experience sourcing and preparing timber for the making of quality stringed instruments. We specialize in European spruce (*Picea abies*) which grows on the upper slopes of the Alps, in mixed and protected forests at about 3,000 feet above sea level, as well as in maple (*Acer pseudoplatanus*). With a base in Mittenwald as well as in Westerholzhausen, Bavaria we are very well placed to find the best wood. The wood is cut according to moon phases where appropriate; the best time is a descending and waning moon.

Alpentonholz (Alpine Tone Wood) was founded by violin maker and forester Andreas Pahler.

After training at the Mittenwald Violin Making school he worked in various restoration and violinmaking workshops. He then went on to study forestry at the Technical University in Munich where he specialized in wood technology. Before founding Alpentonholz, Andreas worked for a London-based timber consultancy, where he personally selected fine tonewood.

Today, Alpentonholz is internationally respected as a source for excellent tonewood, selected by top makers and crafted into award-winning instruments.

## SPRUCE TOPS

### SPLITS

no.	description	net price
<b>VIOLIN</b>		
TW-584.314	Alpean spruce top violin select	22.29
TW-584.315	Alpean spruce top violin fine	43.68
TW-584.316	Alpean spruce top violin very fine	66.08
TW-584.317	Alpean spruce top violin Pahler	88.48
<b>CELLO</b>		
TW-584.414	Alpean spruce top cello select	133.28
TW-584.415	Alpean spruce top cello fine	222.88
TW-584.416	Alpean spruce top cello very fine	334.88
TW-584.417	Alpean spruce top cello Pahler	548.80



TW-584.316 TW-584.317

TW-584.417

## BACKS

### SPLITS

no.	description	net price
<b>VIOLIN</b>		
TW-584.514	Bosnian maple belly and ribs violin - Pahler Selection	155.68
TW-584.515	Bosnian maple belly and ribs violin - Pahler Excellent	245.28
<b>CELLO</b>		
TW-584.524	Bosnian maple belly and ribs cello - Pahler Selection	660.80
TW-584.525	Bosnian maple belly and ribs cello - Pahler Excellent	1,108.80



TW-584.514

TW-584.525



**RIBS**

no.	description	net price
TW-584.510	Rib stock violin. Top grade, cut.	59.14
TW-584.520	Rib stock cello. Top grade, cut.	369.60

**TW-584.510****BLOCKS**

no.	description	net price
TW-584.503	Blockwood violin willow	9.49
TW-584.504	Blockwood violin spruce split	8.62
TW-584.505	Blockwood violin	5.49
TW-584.604	Blockwood cello willow	31.17
TW-584.605	Blockwood cello spruce	31.17

**TW-584.505****LININGS**

no.	description	net price
TW-584.507	Lining wood violin	11.58
TW-584.508	Lining wood violin willow	12.82
TW-584.607	Lining wood cello spruce	16.88
TW-584.608	Lining wood cello willow	16.88

**TW-584.607****BASS BAR SPLITS**

no.	description	net price
TW-584.506	Bassbar splits violin	8.85
TW-584.606	Bassbar splits cello	27.89

**TW-584.506****TW-584.606****BUSHINGS**

no.	description	net price
TW-595.723	Boxwood conical endpin hole bushings for cello/bass, 153x36/27mm.	13.81
TW-595.724	Boxwood conical endpin hole bushings for cello/bass, 153x30/21mm.	13.81

**TW-595.723****TW-595.724**



SETS

no.	description	net price
TW-593.600	Master set violin. Guarneri-inspired, with one-piece back, ribs, neck, and top.	448.00
TW-593.601	Master set violin. Guarneri-inspired, with two-piece back, ribs, neck, and top.	420.00
TW-593.602	Master set viola. Guadagnini-inspired, with back, ribs, neck, and top.	476.00
TW-593.603	Master set cello. Strad-inspired, with back, ribs, neck, and top.	3,136.00



TW-593.600



TW-593.602



TW-593.603

REPAIR WOOD PANEL

no.	description	net price
TW-584.609	Repair wood panel, spruce. 18c	12.53



TW-584.609



**SOUNDPOSTS - VIOLIN**

no.	description	net price
SW593.305	Soundpost 15" violin 6.0 Premium	12.51
SW593.306	Soundpost 15" violin 6.2 Premium	12.51
SW593.307	Soundpost 15" violin 6.3 Premium	12.51
SW593.405	Soundpost split 6.5" violin 6.0 Premium	11.09
SW593.406	Soundpost split 6.5" violin 6.2 Premium	14.25
SW593.407	Soundpost split 6.5" violin 6.3 Premium	11.09

**SOUNDPOSTS - VIOLA**

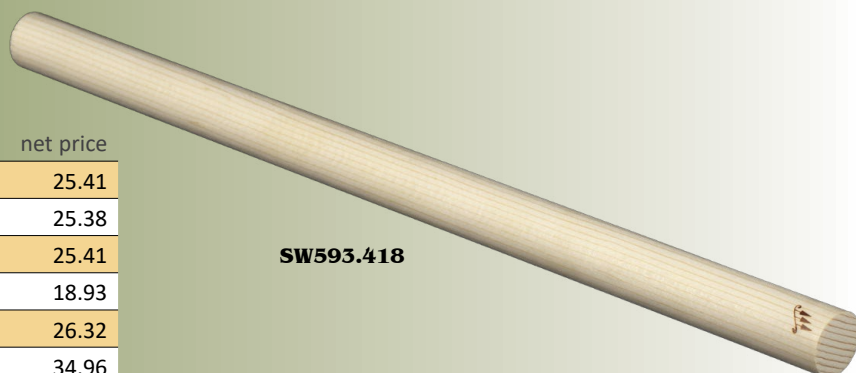
no.	description	net price
SW593.308	Soundpost 15" viola 6.5 Premium	17.79
SW593.309	Soundpost 15" viola 7.0 Premium	15.04
SW593.310	Soundpost 15" viola 7.25 Premium	13.33
SW593.408	Soundpost split 6.5" viola 6.5 Premium	17.69
SW593.409	Soundpost split 6.5" viola 7.0 Premium	13.33
SW593.410	Soundpost split 6.5" viola 7.5 Premium	17.69

**SOUNDPOSTS - CELLO**

no.	description	net price
SW593.311	Soundpost 15" cello 10.0 Premium	15.57
SW593.312	Soundpost 15" cello 10.5 Premium	20.61
SW593.313	Soundpost 15" cello 11.0 Premium	17.47
SW593.314	Soundpost 15" cello 11.5 Premium	15.57
SW593.315	Soundpost 15" cello 12.0 Premium	17.47
SW593.411	Soundpost split 6.5" cello 10.0 Premium	15.57
SW593.412	Soundpost split 6.5" cello 10.5 Premium	15.57
SW593.413	Soundpost split 6.5" cello 11.0 Premium	21.11
SW593.414	Soundpost split 6.5" cello 11.5 Premium	15.57
SW593.415	Soundpost split 6.5" cello 12.0 Premium	15.57

**SOUNDPOSTS - BASS**

no.	description	net price
SW593.316	Soundpost 14" bass 16.0 Premium	25.41
SW593.317	Soundpost 14" bass 18.0 Premium	25.38
SW593.318	Soundpost 14" bass 19.0 Premium	25.41
SW593.319	Soundpost 14" bass 20.0 Premium	18.93
SW593.416	Soundpost split 14" bass 16.0 Premium	26.32
SW593.417	Soundpost split 14" bass 18.0 Premium	34.96
SW593.418	Soundpost split 14" bass 19.0 Premium	26.32
SW593.419	Soundpost split 14" bass 20.0 Premium	26.32

**SW593.305****SW593.313****SW593.418**

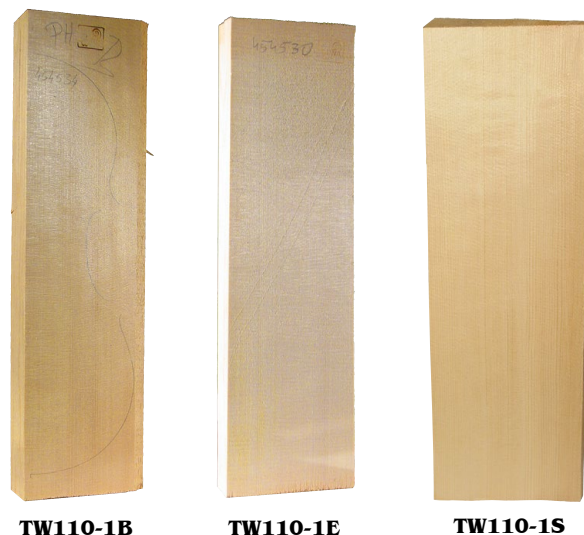
## SPRUCE TOPS

## SPLITS

no.	description	net price
<b>VIOLIN</b>		
TW110-1A	Select quality, old	112.56
TW110-1B	Professional quality	82.54
TW110-1C	Very good quality	45.02
TW110-1D	Good quality	30.02
TW110-1E	Student quality	13.4
TW110-1F	Lowest grade - flawed	7.62
TW110-1S	Finest available, split	CALL
<b>VIOLA</b>		
TW210-1A	Select quality, old	113.89
TW210-1B	Professional quality	87.09
TW210-1C	Very good quality	48.24
TW210-1D	Good quality	32.16
TW210-1E	Student quality	16.08
TW210-1F	Lowest grade - flawed	8.89
TW210-1S	Finest available	CALL
<b>CELLO</b>		
TW310-1A	Select quality, old	736.96
TW310-1B	Professional quality	636.47
TW310-1C	Very good quality	368.48
TW310-1D	Good quality	281.39
TW310-1E	Student quality	154.09
TW310-1F	Lowest grade - flawed	93.8
TW310-1S	Finest available	CALL
<b>BASS - LIMITED AVAILABILITY</b>		
TW410-1B	Professional quality	2,009.91
TW410-1C	Very good quality	1,004.95
TW410-1D	Good quality	736.96
TW410-1E	Student quality	468.98

## ROUTED AND JOINED

no.	description	net price
<b>VIOLIN</b>		
TW112-1A	Select quality, old	99.33
TW112-1B	Professional quality	59.60
TW112-1C	Very good quality	46.36
TW112-1D	Good quality	33.11
TW112-1E	Student quality	26.49
<b>VIOLA - AVAILABLE AS SPECIAL ORDER IN THESE SIZES: 15", 15½", 16", 16½"</b>		
TW212-1A	Select quality, old	119.20
TW212-1B	Professional quality	71.52
TW212-1C	Very good quality	55.63
TW212-1D	Good quality	39.74
TW212-1E	Student quality	31.79
<b>CELLO BY SPECIAL ORDER ONLY</b>		



TW310-1A





**MAPLE BACKS - WITH SET OF MATCHING RIBS****SPLITS**

no.	description	net price
<b>VIOLIN</b>		
TW120-1A	Exceptional quality - well flamed	247.89
TW120-1B	Professional grade - well flamed	160.79
TW120-1C	Very good quality - flamed	87.09
TW120-1D	Good quality - lightly flamed	46.89
TW120-1E	Student quality - plain	20.10
TW120-1F	Lowest grade - flawed	11.44
TW120-1S	Select quality IA	CALL
<b>VIOLA</b>		
TW220-1A	Exceptional quality - well flamed	301.48
TW220-1B	Professional grade - well flamed	192.95
TW220-1C	Very good quality - flamed	104.52
TW220-1D	Good quality - lightly flamed	56.28
TW220-1E	Student quality - plain	24.11
TW220-1F	Lowest grade - flawed	14.74
TW220-1S	Select quality IA	CALL
<b>CELLO</b>		
TW320-1A	Exceptional quality - well flamed	1,138.95
TW320-1B	Professional grade - well flamed	770.47
TW320-1C	Very good quality - flamed	522.57
TW320-1D	Good quality - lightly flamed	308.19
TW320-1E	Student quality - plain	140.69
TW320-1F	Lowest grade - flawed	87.09
TW320-1S	Select quality IA	CALL
<b>BASS - LIMITED AVAILABILITY</b>		
TW420-1B	Professional grade - well flamed	1,758.12
TW420-1C	Very good quality - flamed	1,470.00
TW420-1D	Good quality - lightly flamed	646.80
TW420-1E	Student quality - plain	582.12

**ROUTED AND JOINED**

no.	description	net price
<b>VIOLIN</b>		
TW122-1A	Exceptional quality - well flamed	185.42
TW122-1B	Professional grade - well flamed	119.20
TW122-1C	Very good quality - flamed	86.08
TW122-1D	Good quality - lightly flamed	46.36
TW122-1E	Student quality - plain	33.11
TW122-1S	Select quality IA	CALL
<b>VIOLA</b>		
TW222-1A	Exceptional quality - well flamed	220.43
TW222-1B	Professional grade - well flamed	137.74
TW222-1C	Very good quality - flamed	185.00
TW222-1D	Good quality - lightly flamed	50.33
TW222-1E	Student quality - plain	33.11
<b>CELLO Fractional sizes also available</b>		
TW322-1A	Exceptional quality - well flamed	CALL
TW322-1B	Professional grade - well flamed	635.71
TW322-1C	Very good quality - flamed	437.06
TW322-1D	Good quality - lightly flamed	357.59
TW322-1E	Student quality - plain	231.77



**ONE-PIECE BACKS ALSO AVAILABLE  
PLEASE INQUIRE**

**ORDER ONLINE !!**  
[www.howardcore.com](http://www.howardcore.com)



## NECK BLOCKS



no.	description	net price
<b>VIOLIN</b>		
TW130-1A	Exceptional quality - well flamed	93.80
TW130-1B	Professional grade - well flamed	60.30
TW130-1C	Very good quality - flamed	33.50
TW130-1D	Good quality - lightly flamed	14.74
TW130-1E	Student quality - plain	9.39
TW130-1F	Lowest grade - flawed	6.70
TW130-1S	Select quality 1A	CALL
<b>VIOLA</b>		
TW230-1A	Exceptional quality - well flamed	112.56
TW230-1B	Professional grade - well flamed	73.70
TW230-1C	Very good quality - flamed	40.20
TW230-1D	Good quality - lightly flamed	17.42
TW230-1E	Student quality - plain	14.47
TW230-1F	Lowest grade - flawed	8.04
TW230-1S	Select quality 1A	CALL
<b>CELLO</b>		
TW330-1A	Exceptional quality - well flamed	368.48
TW330-1B	Professional grade - well flamed	234.49
TW330-1C	Very good quality - flamed	160.79
TW330-1D	Good quality - lightly flamed	105.85
TW330-1E	Student quality - plain	49.58
TW330-1F	Lowest grade - flawed	33.50
TW330-1S	Select quality 1A	CALL
<b>BASS - LIMITED AVAILABILITY</b>		
TW430-1C	Very good quality - flamed	569.48
TW430-1D	Good quality - lightly flamed	812.83
TW430-1E	Student quality - plain	241.18



TW130-1A



TW130-1E

## NECK GRAFTING BLOCKS



no.	description	net price
<b>VIOLIN</b>		
TW131-1A	Exceptional quality - well flamed	46.36
TW131-1B	Professional grade - well flamed	26.49
TW131-1D	Good quality - lightly flamed	7.95
<b>VIOLA</b>		
TW231-1A	Exceptional quality - well flamed	59.60
TW231-1B	Professional grade - well flamed	33.11
TW231-1D	Good quality - flamed	15.89
<b>CELLO</b>		
TW331-1A	Exceptional quality - well flamed	297.99
TW331-1B	Professional grade - well flamed	225.15
TW331-1C	Very good quality - flamed	165.55
TW331-1D	Good quality - lightly flamed	119.20



## NECKS WITH SCROLL

no.	description	net price
<b>VIOLIN</b>		
TW132-1A	Exceptional quality - well flamed	139.06
TW132-1B	Professional grade - well flamed	104.96
TW132-1C	Very good quality - flamed	79.46
TW132-1D	Good quality - lightly flamed	45.93
TW132-2D	Good quality - lightly flamed, 3/4	45.93
TW132-1E	Student quality - plain	45.15
<b>VIOLA</b>		
TW232-1A	Exceptional quality - well flamed	172.18
TW232-1B	Professional grade - well flamed	125.82
TW232-1C	Very good quality - flamed	92.71
TW232-1D	Good quality - lightly flamed	59.05
TW232-1E	Student quality - plain	93.16
<b>CELLO</b>		
TW332-1A	Exceptional quality - well flamed	721.64
TW332-1C	Very good quality - flamed	258.26
TW332-1D	Good quality - lightly flamed	198.67
TW332-1E	Student quality - plain - 4/4	152.31
TW332-2E	Student quality - plain - 3/4	152.31
TW332-3E	Student quality - plain - 1/2	152.31
TW332-4E	Student quality - plain - 1/4	135.89

**NECKS WITH SCROLL & FINGERBOARD  
NEXT PAGE ...**





**NECKS WITH SCROLL & FINGERBOARD**

no.	description	net price
<b>VIOLIN</b>		
TW133-1A	Exceptional quality - highly flamed	623.24
TW133-1B	Professional grade - well flamed	321.46
TW133-1C	Very good quality - flamed	223.06
TW133-1C5	Like above, 5-string	249.29
TW133-1D	Good quality - lightly flamed	203.37
TW133-1D5	Like above, 5-string	229.61
TW133-1E	Student quality - plain	183.69
<b>VIOLA</b>		
TW233-1B	Professional grade - well flamed	354.27
TW233-1C	Very good quality - flamed	223.06
TW233-1C5	Like above, 5-string	295.22
TW233-1E	Student quality - plain	229.61
<b>CELLO</b>		
TW333-1A	Exceptional quality - well flamed	1,148.07
TW333-1C	Very good quality - flamed	944.70
TW333-1D	Good quality - lightly flamed	806.93
TW333-1E	Student quality - plain	708.52



**ALL WOOD SOLD ON  
THESE PAGES IS EUROPEAN**

**ORDER ONLINE !!**  
[www.howardcore.com](http://www.howardcore.com)

**RIBS (SIDES) BENT**

no.	description	net price
<b>VIOLIN</b>		
TW141-1B	Professional grade - highly flamed	78.73
TW141-1D	Good quality - lightly flamed	47.23
TW141-1E	Student quality - plain	30.17
<b>VIOLA</b>		
TW241-1E	Student quality - plain	35.43
<b>CELLO</b>		
TW341-1C	Very good quality - flamed	209.94

**RIBS (SIDES) STRAIGHT**

no.	description	net price
<b>VIOLIN</b>		
TW140-1A	Exceptional quality - well flamed	53.60
TW140-1B	Professional grade - well flamed	34.83
TW140-1C	Very good quality - flamed	13.40
TW140-1D	Good quality - lightly flamed	6.71
TW140-1E	Student quality - plain	3.97
TW140-1F	Mismatched sets	1.34
<b>VIOLA</b>		
TW240-1A	Exceptional quality - well flamed	64.31
TW240-1B	Professional grade - well flamed	40.20
TW240-1C	Very good quality - flamed	14.88
TW240-1D	Good quality - lightly flamed	7.45
TW240-1E	Student quality - plain	8.01
TW240-1F	Mismatched sets	1.34
<b>CELLO</b>		
TW340-1A	Exceptional quality - well flamed	201.00
TW340-1B	Professional grade - well flamed	127.29
TW340-1C	Very good quality - flamed	87.09
TW340-1D	Good quality - lightly flamed	60.29
TW340-1E	Student quality - plain	33.50
<b>BASS - LIMITED AVAILABILITY</b>		
TW440-1B	Professional grade - well flamed	321.59
TW440-1C	Very good quality - flamed	247.89
TW440-1D	Good quality - lightly flamed	174.19
TW440-1E	Student quality - plain	120.59



**LININGS**

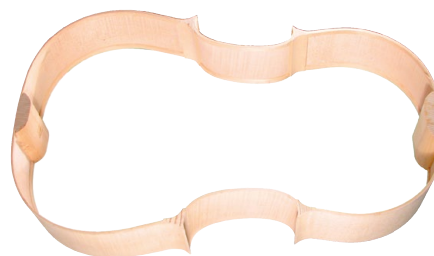
no.	description	net price
TW150	Violin, straight.	5.30
TW152	Violin, BENT. 12 pc.	47.23
TW350	Cello, straight	15.74
TW352	Cello, BENT. 12 pc.	111.53

**BLOCKS**

no.	description	net price
TW160-1	40 x 5.5 x 2 cm	7.95
TW160-2	40 x 3 x 3 cm	7.95
TW160-3	12 x 2.5 x 4.5 cm	7.60
TW160-4	6 pc. block set, pre-cut (violin)	19.68
TW260	6 pc. block set, pre-cut (viola)	24.93
TW360-1	50 x 12 x 3 cm	19.87
TW360-2	50 x 5 x 5 cm	19.87
TW360-3	23 x 4 x 6 cm	16.80

**GARLANDS**

no.	description	net price
TW342-1	Cello garland 4/4	1,991.00
TW342-178	Cello garland 7/8	1,370.66

**PURFLING****VIOLIN**

thickness in mm

no.	description	black	white	black	net price
W11	Straight, Fiber/maple/fiber, 3 pcs. per set.	0.30	0.80	0.30	7.53
W12M	Straight, Maple/maple/maple, 3 pcs. per set.	0.30	0.80	0.30	8.53
W12P	Straight, Maple/pearwood/maple, 3 pcs. set.	0.30	0.80	0.30	9.96
W14	Bent, Ebony/maple/ebony, 12 pcs. per set.	0.31	0.65	0.31	159.74


**VIOLA**

W11VA	Straight, Fiber/maple/fiber, 3 pcs. per set.	0.30	0.80	0.30	8.14
W12VAM	Straight, Maple/maple/maple, 3 pcs. per set.	0.30	0.80	0.30	8.74
W12VAP	Straight, Maple/pearwood/maple, 3 pc. per set.	0.30	0.80	0.30	10.57
W14VA	Bent, Ebony/maple/ebony, 12 pcs. per set.	0.40	0.70	0.40	62.03

**CELLO**

W11C	Straight, Fiber/maple/fiber, 7 pcs, per set.	0.50	1.00	0.50	20.93
W12C	Straight, Maple/maple/maple, 7 pcs. per set.	0.50	1.00	0.50	22.34
W12CP	Straight, Maple/pearwood/maple, 7 pc. per set	0.50	1.00	0.50	26.21

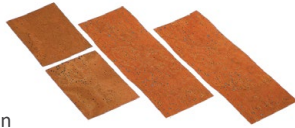
**MAPLE HAS WHITE MIDDLE, PEARWOOD HAS LIGHT TAN MIDDLE. MEASUREMENTS MAY VARY SLIGHTLY.**

**BOXWOOD PEGHOLE BUSHINGS****VIOLIN/VIOLA**



no.	description	net each
BUSH1	Boxwood, tapered to fit our peg shapers.	3.15
BUSHM1	Maple.	3.15
BUSHB1-CYLINDRICAL	Boxwood, cylindrical.	4.52
BUSHM1-CYLINDRICAL	Maple, cylindrical.	8.52

**CELLO**

BUSH3	Boxwood, tapered to fit our peg shapers.	4.01
BUSHM3	Maple.	4.01
BUSHB3-CYLINDRICAL	Boxwood, cylindrical.	8.99
BUSHM3-CYLINDRICAL	Maple, cylindrical.	11.19

**CORK SHEETS****VIOLIN/VIOLA**


no.	description	net each
C11-7	Top quality cork sheet, 1/16". 4" x 6".	14.04
C11-8	Same as above, 1/32" sheet. 4" x 6".	12.29
GW434930	1½" x 5" sheet	1.41

**SPRUCE BASS BARS****VIOLIN 300 X 20 X 8**


no.	description	net price
BB1IA	Selected quality	9.32
BB1	Good quality	6.03
BB1-II	Lowest quality	2.54

**VIOLA 350 X 20 X 8**


BB2IA	Selected quality	10.11
BB2	Standard quality	7.10
BB2-II	Lowest quality	2.95

**CELLO 630 X 35 X 12**

BB3IA	Selected quality	24.06
BB3	Standard quality	12.00
BB3-II	Lowest quality	6.23

**BASS 900 X 50 X 30**

BB4IA	Selected quality	57.09
BB4	Standard quality	28.54
BB4-II	Lowest quality	13.93

**SOUNDPOSTS****VIOLIN**


no.	description	net each
SW1IA	Selected quality. 4/4 (6.2 mm - 6.3 mm)	12.06
SW1IA-2	Selected quality. 3/4 (5.7 mm - 5.8 mm)	12.06
SW1IA-3	Selected quality. 1/2 (5.4 mm - 5.5 mm)	12.06
SW1IA-4	Selected quality. 1/4 (5.2 mm - 5.3 mm)	12.06
SW1-1	Better quality. 4/4 (6.2 mm - 6.3 mm)	7.37
SW1-2	Better quality. 3/4 (5.7 mm - 5.8 mm)	7.37
SW1-3	Better quality. 1/2 (5.4 mm - 5.5 mm)	7.37
SW1-4	Better quality. 1/4 (5.2 mm - 5.3 mm)	7.37
SW1-5	Better quality. 1/8 (4.7 mm - 4.8 mm)	7.37
SW1-II-1	Standard quality. 4/4 (6.2 mm - 6.3 mm)	5.62
SW1-II-2	Standard quality. 3/4 (5.7 mm - 5.8 mm)	5.62
SW1-II-3	Standard quality. 1/2 (5.4 mm - 5.5 mm)	5.62
SW1-II-4	Standard quality. 1/4 (5.2 mm - 5.3 mm)	5.62
SW1-II-5	Standard quality. 1/8 (4.7 mm - 4.8 mm)	5.62

**VIOLA**

SW2IA	Selected quality. 4/4 (7.0 mm).	13.06
SW2IA-2	Selected quality. 3/4 (6.5 mm).	13.06
SW2	Better quality. 4/4 (7.0 mm).	8.24
SW2-2	Better quality. 3/4 (6.5 mm).	8.24
SW2-II	Standard quality. 4/4 (7.0 mm).	6.43
SW2-II-2	Standard quality. 3/4 (6.5 mm).	6.43

**CELLO**

SW3IA-1	Selected quality. 4/4 (11 mm).	18.36
SW3IA-12	Selected quality. 12 mm	18.36
SW3IA-13	Selected quality. 13 mm	18.36
SW3IA-2	Selected quality. 3/4 (10.5 mm)	17.62
SW3IA-3	Selected quality. 1/2 (9.5 mm).	17.62
SW3-1	Better quality. 4/4 (11 mm).	10.85
SW3-1-12	Better quality. 4/4 (12 mm).	10.85
SW3-1-13	Better quality. 4/4 (13 mm).	10.85
SW3-2	Better quality. 3/4 (10.5 mm).	10.85
SW3-3	Better quality. 1/2 (9.5 mm).	10.85
SW3-4	Better quality. 1/4 (9.0 mm).	10.85
SW3-II-1	Standard quality. 4/4 (11 mm).	9.71
SW3-II-2	Standard quality. 3/4 (10.5 mm).	9.71
SW3-II-3	Standard quality. 1/2 (9.5 mm).	9.71

**BASS** - Bass soundpost wood is: 3/4 = 19 mm; 1/2 = 16 mm

SW4IA-2	Selected quality. 3/4	21.77
SW4IA-3	Selected quality. 1/2	21.77
SW4-2	Better quality. 3/4	14.40
SW4-3	Better quality. 1/2	14.40
SW4-4	Better quality. 1/4	14.40
SW4-5	Better quality. 1/8	14.40
SW4-6	Better quality. 1/10	14.40
SW4-II-2	Standard quality. 3/4	11.66
SW4-II-3	Standard quality. 1/2	11.66

Violin, viola and cello soundpost sticks all approximately 400 mm long.  
Bass soundpost sticks approximately 300 mm long.

Each stick yields 6 posts for violin/viola, 2 cello, 1 bass.



## FINGERBOARDS

## VIOLIN

no.	description	NET
VF10-1A	"A" quality ebony. Indian. 4/4.	43.02
VF10-1B	"B" quality ebony. Indian. 4/4.	30.13
VF10-1C	"C" quality ebony. Indian. 4/4.	17.21
VF10-2B	"B" quality ebony. Indian. 3/4.	30.13
VF10-3B	"B" quality ebony. Indian. 1/2.	30.13
VF10-4B	"B" quality ebony. Indian. 1/4.	30.13
<b>German Made:</b>		
VFH	Hardwood stained black. 1/8 - 4/4.	19.98
VF01	Lower grade ebony. 4/4.	33.54
VF1	Fine ebony. 1/8 - 4/4.	47.57
VF1P	Polished ebony. 4/4.	55.50
VF2	Better ebony. 4/4.	68.71
VF3	Finest ebony. 4/4.	90.66
VFIA	Selected Ceylon ebony. 4/4.	113.02
VFV	Five string violin, quality like VF 1P.	90.66

VF-NERO-VN-1	Nero. Width at nut 26mm; width at bridge 43.5mm; length 270mm. The Nero material is <b>Made in the USA</b> from eucalyptus paper and thermosetting resins. It is pure black and mimics the finest Madagascar ebony.	66.01
--------------	---------------------------------------------------------------------------------------------------------------------------------------------------------------------------------------------------------------------	-------

## VIOLA

no.	description	NET
VLF20-1A	"A" quality ebony. Indian. 4/4.	51.64
VLF20-1B	"B" quality ebony. Indian. 4/4.	36.14
VLF20-1C	"C" quality ebony. Indian. 4/4.	20.66

**German Made:**

VLF1	Good ebony.	57.09
VLF3	Finest ebony.	108.80
VLFIA	Selected Ceylon ebony.	135.63

## PLEASE NOTE:

Ebony is getting more scarce and is becoming more difficult to source. You must expect to see brown streaks in most lower priced fingerboards today. Even the best ebony will sometimes have less than perfect black. We sell the finest now made from all around the world so you can be certain that what you receive is the best possible in that particular price range.



## CELLO

no.	description	NET
CF30-1A	"A" quality ebony, round. Indian. 4/4.	215.14
CF30-1B	"B" quality ebony, round. Indian. 4/4.	172.13
CF30-2B	"B" quality ebony, round. Indian. 3/4.	172.13
CF30-3B	"B" quality ebony, round. Indian. 1/2.	172.13
CF31-1A	"A" quality ebony, bevel. Indian. 4/4.	215.14
CF31-1B	"B" quality ebony, bevel. Indian. 4/4.	172.13
CF31-1C	"C" quality ebony, bevel. Indian. 4/4.	86.06

**German Made:**

CFH	African hardwood, natural. 1/4.	188.50
CF01	Lower grade ebony. 3/4.	224.79
CF1	Good ebony. 4/4, 1/2.	240.27
CF2	Better ebony. 4/4.	353.20
CF-NERO-VC-1	Nero, round. Width at nut 32mm; width at bridge 62.5mm; length 580mm.	107.87

## BASS

no.	description	NET
BF40-1A	"A" quality ebony, round. Indian. 4/4.	602.41
BF40-2A	"A" quality ebony, round. Indian. 3/4.	602.41
BF40-2B	"B" quality ebony, round. Indian. 3/4.	451.80
BF40-2C	"C" quality ebony, round. Indian. 3/4.	322.73
BF41-1B	"B" quality ebony, bevel. Indian. 4/4.	291.02
BF41-2A	"A" quality ebony, bevel. Indian. 3/4.	602.41
BF41-2C	"C" quality ebony, bevel. Indian. 3/4.	322.73
BF41-3B	"B" quality ebony, bevel. Indian. 1/2.	451.80

**German Made:**

BF1	Good ebony. 1/4.	435.83
-----	------------------	--------



VF-NERO-VN-1



VF-NERO-VC-1



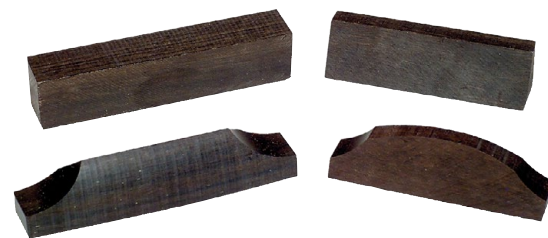


**SADDLES**

no.	description	NET
SA1	Violin, finished	2.07
SA2	Viola, finished	2.07
SA3	Cello, finished	6.29
SA4	Bass, finished	11.88
SA10	Violin, unfinished	0.83
SA20	Viola, unfinished	0.83
SA30	Cello, unfinished	3.58
SA40	Bass, unfinished	9.13

**FINGERBOARD NUTS, EBONY**

no.	description	NET
FN1	Violin, finished	1.89
FN2	Viola, finished	1.89
FN3	Cello, finished	5.45
FN4	Bass, finished	10.83
FN10	Violin, unfinished	1.12
FN20	Viola, unfinished	1.12
FN30	Cello, unfinished	4.83
FN40	Bass, unfinished	9.13

**CORE SHOP APRON**

no.	NET
CORE-APRON	35.00



*The smell of the workshop, the feel of old wood...*

If you're like us, these are more than just pictures - they're a way of life!

At Howard Core Company, we go to great lengths to ensure that our products are of the highest quality and will fulfill your needs when you are giving your valuable time and effort to your next masterpiece.

Whether the instrument you are repairing is student or master quality, we have what you need to do the job! If you don't see what you need in these pages, call us!



# Old Wood®

Grounds, Oil Varnishes &amp; Natural Colours

## 1700 System

*These finishing products are causing quite a stir among discerning luthiers and woodworking craftsmen. Based upon the original recipes of the old Italian violin-makers, the 1700 System utilizes grounds to prepare the wood, then a special varnish used in tandem with its organic pigment glaze to give the wood a rich, beautiful finish. Made in Spain.*

### WHY SHOULD YOU BUY THE OLD WOOD 1700 SYSTEM?

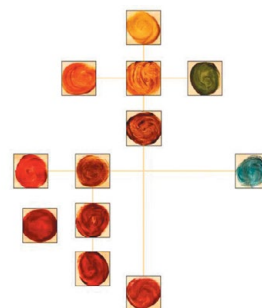
**1. ADDS VALUE TO THE INSTRUMENT** - the 1700 system provides the instrument with an elegant and extraordinary look, adding depth, tone, and a dichromatic effect, enhancing the wood.

**2. SAVES TIME** - Everything needed to finish the instrument is right here! Also, no milling of colors (hours saved!)

**3. RELIABILITY** - Homogeneous results, every time - no color variations.

**4. COST-PERFORMANCE RATIO** - when properly used, the cost of the Old Wood 1700 system is generally between 1% and 5% of the total cost of the instrument! See below for how many instruments can be finished with one 60 cc bottle of:

Italian Golden Ground - 10 violins; Imprimatura - 6 violins; Doratura - 8 violins;  
any Oil Natural Color - 10-11 violins; Varnish - 5 violins.



### WE HAVE USED THIS SYSTEM IN OUR OWN SHOP, WITH TREMENDOUS RESULTS!!

**OWG1****OWG2****OWG3****OWV1****OWV4**

### GROUNDS

no.	description	qty	\$-NET
OWG1-60	Set of Italian Golden Grounds A and B, one 60 cc bottle of each.	60 cc	158.60
OWG1-125	Set of Italian Golden Grounds A and B, one 125 cc bottle of each.	125 cc	287.45
OWG2-35	Imprimatura Minerale, 35 ml.	35 ml	63.43
OWG3-35	Grounds, Doratura Minerale 170	35 ml	105.08

### OIL VARNISHES

no.	description	qty	\$-NET	qty	\$-NET
OWV1	Classical Amber Varnish	60 cc	107.05	125 cc	170.48
OWV4	Brescia Brown Varnish	60 cc	132.83	125 cc	220.05
OWV5	Cremona Varnish	60 cc	107.05	125 cc	170.48

**SPECIFY AMOUNT WHEN ORDERING !!**

no.	description	qty	\$-NET
OWG4-30	Refractive ground, transparent pale color liquid to generate optical effect of depth.	30 cc	53.53
OWG4-60	Refractive ground, transparent pale color liquid to generate optical effect of depth.	60 cc	95.15

## OIL NATURAL COLORS

no.	description	qty	\$-NET
OWC1	Weld - Indian Yellow	20 cc	168.50
OWC2	Cosmos - Golden Yellow	20 cc	168.50
OWC3	Cosmos - Golden Oak	20 cc	168.50
OWC4	Pernambuco - Golden Brown	20 cc	168.50
OWC5	Madder Lake - Red	20 cc	168.50
OWC6	Madder Lake - Brown Red	20 cc	168.50
OWC7	Sorghum - Venetian Red	20 cc	168.50
OWC8	Cochineal - Dark Violet	20 cc	168.50
OWC9	Lac Dye - Cherry Red	20 cc	168.50
OWC10	Walnut - Dark Brown	20 cc	168.50
OWC11	Chlorophyll - Green	20 cc	168.50
OWC12	Indigo - Blue	20 cc	168.50

**Old Wood®**  
Grounds, Oil Varnishes & Natural Colours  
1700 System



## FOR FURTHER INFORMATION:

Since we do not finish instruments ourselves, our knowledge of techniques, formulas, etc. is necessarily "second hand", and we do not feel qualified to give advice. There are several excellent books on this subject which we can recommend and they are:

- Violin Varnishes by Hammerl. They make the products! (see pg. I-6)
- Sections of Art and Method of the Violinmaker, Violinmakers Notebook, and Violin Making Step by Step books by Henry Strobel also contain worthwhile varnishing information. (pg. I-8)

All these books, plus many more, are available from us. Please look in the book section of this catalog.

**DOWNLOAD MORE INFORMATION  
ABOUT THE OLD WOOD SYSTEM  
FROM OUR WEBSITE!**





**STAINS AND PRIMERS**

If the unfinished instrument is to have a beautiful basic color, it should be stained before varnishing. But since the hardness of wood can vary, thus absorbing the stain unevenly, it is recommended that the basic instrument should be pre-treated first to ensure that the color is attractively even.

**INSTRUCTIONS FOR PRE-TREATING THE WOOD**

Dissolve about 30 g of gelatin powder in a liter of warm water and then heat until the solution is clear and thin. Apply the warm solution evenly with a bristle brush, leave to dry completely and sand down very carefully with a fine sandpaper. The various stains described below can then be applied.

**INSTRUCTIONS FOR APPLICATION OF WATER-BASED STAINS**

Water-based stains are available in some twenty shades. Dissolve contents of the bag, following the instructions on the label. To make the color lighter or deeper, change the proportion of water used. Apply the stain solution evenly to the cleanly sanded instruments using a sponge or brush. Wipe off excess stain with a dry rag.

**JOHA® ANTIQUE STAIN #421**

Stain #421 - antique gray-brown is a ready-mixed oxidation stain. After application, the color changes under the effect of air and daylight from being colorless to antique gray-brown. This stain is applied exactly as described above. Once the required color has been reached, gently sand with a fine sandpaper and apply one coat of basic varnish. This prevents further modification of the color. Ideally, one should carry out a test stain and varnish to see what the final result will be, since the colors will vary with different types of wood. This stain particularly draws out timber rings.

**JOHA® STAIN #423 & JOHA® STAIN #402 M**

Stain #402 M is a rich brown, ready-made stain which should be used if a dark instrument is required. Stain #423 is a ready-made orange stain made from natural dyes. Use as water-based stains.

**AN INTRODUCTION TO OUR VARNISHES:****SPIRIT VARNISH**

Spirit varnish has always been the varnish most commonly used for stringed instruments. It dries quickly, thus allowing a daily coating. The varnish must be applied quickly, however, in order to prevent the varnish from clouding, especially on color varnish. Every coat must be thoroughly dried before the next coat is applied in order to prevent cracks from materializing later. (Press hard on the varnish with your thumb for a few seconds. If it fails to make a print, then you can apply the next coat.) Spirit varnish can be smoothed well with pumice stone or rottenstone and polished.

**PROPOLIS MIXED VARNISH**

This is an Italian type varnish which, in spite of being a very soft varnish, dries well. After it has been left to dry for a few days it polishes very well. As the name suggests this varnish is partly made up of propolis and is particularly fine quality. Its natural color is an antique yellow. This varnish should be smoothed with rottenstone and polished after it has dried completely, at least 30 days.

**OIL VARNISH, STANDARD QUALITY**

This varnish applies very well. It should be diluted a bit with balsam turpentine (the thinner that is listed with the oil varnishes), despite the fact that it takes a little longer to dry. (Test this also with your thumb to see if it is dry.) Contrary to popular opinion, in the long run, this varnish actually becomes somewhat harder than spirit varnish. You can smooth this varnish with pumice stone or rottenstone and work it to a gentle shine with polish and oil.

**VOLATILE OIL VARNISH**

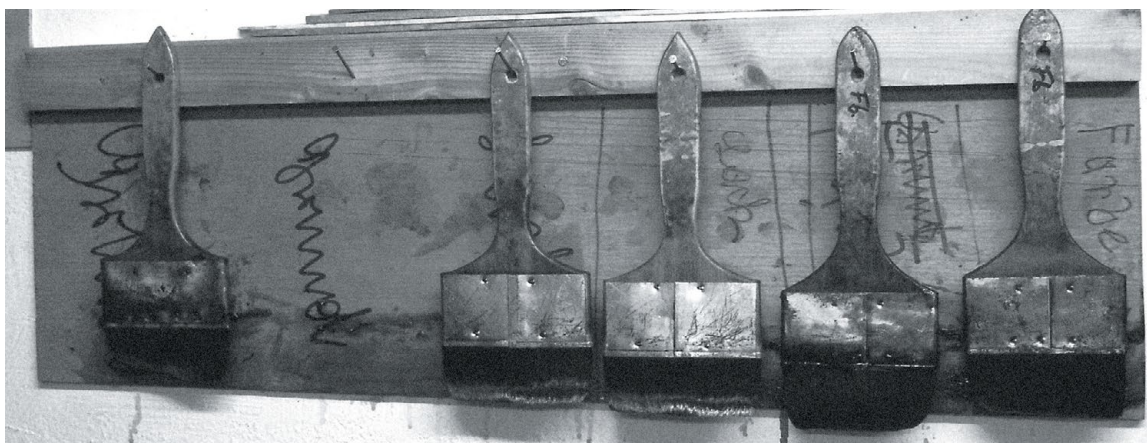
An outstanding oil varnish made with balsams and volatile oils which dries much faster than normal oil varnishes. As a result, however, it is not as easy to apply as normal oil varnish. Because it contains propolis, it stays elastic for a long time and allows the wood to vibrate properly. However, this means that volatile oil varnish may remain sensitive to heat and pressure even after years. After the last coat has dried (thirty days to six weeks) the volatile oil varnish can be smoothed with tripoli powder and polished.

**RETOUCHING VARNISH**

This is ideal for repairing damaged varnish on musical instruments. It is made using selected resins and a special solvent, thus providing excellent adhesion to damaged areas. In order to achieve better cover, retouching varnish has a slightly stronger color. The composition of this special varnish means it is ideal for repairs both to spirit and oil varnishes. The special thinner must be used with the retouching varnish. All colors can be mixed with each other. This varnish should be thickly dabbed or applied to the area to be repaired; leave to dry completely and then sand smooth to match the remaining varnish.

**COLOR EXTRACT**

Color extract is a liquid, light-resistant, transparent color for tinting colorless varnishes, although it can also be used with all other spirit, oil and synthetic resin varnishes. The colors can be mixed with each other, so that any desired shade may be matched. The liquid may be added directly to the varnish. This color extract is superior to spirit and oil soluble powders as it is much more resistant to light.





A list of dyeing resins, their color and solvents is shown below. This is a general overview and is intended as a guide. Please experiment yourself, using potash, ammonia solution, iron chloride, etc. A detailed description of the resins and dyeing resins is given in the book "VIOLIN VARNISH" by Hammerl. (See book section - item # BOOKH102.)

DYEING RESIN	COLOR	SOLVENT	COMMENTS
Acaroid Resin	red	spirit	
Alkanna Root or alkanet	red	spirit turpentine volatile oils	may turn slightly bluish
Alicarin = madder	as for madder root but more highly concentrated		
Aloe	yellowish-brown to brown	spirit water	heat to dissolve heat to dissolve
Asphalt	brown	spirit - acetone mixture add spirit	make into paste
Logwood extract	black	water	Boil up logwood extract + iron vitriol. Place wood in solution and if possible boil with it.
Campeachy Wood aka fogwood	dark red yellow	water spirit	heat to dissolve heat to dissolve
Catechu	warm brown brown to red-brown	water spirit	heat to dissolve heat to dissolve
Cochineal	red	spirit + spike oil	Reduce to powder and heat to dissolve. Caution: easily turns violet.
Curcuma Root	yellow	spirit	heat to dissolve
Dragon's Blood	red	spirit volatile oils	heat to dissolve heat to dissolve
Safflower	yellowish-orange yellow reddish-yellow	water + soda water + potash spirit	boil up boil up heat to dissolve
Pernambuco or redwood	Yellowish-brown to reddish-brown golden yellow	water + potash spirit	boil up heat to dissolve
Gallnut	black	water + iron chloride	boil up
Yellow Wood Extract liquid	yellow yellow	spirit water	readily soluble
Guaiacum	brown	spirit	heat to dissolve
Gambage	yellow	spirit	heat to dissolve Caution: TOXIC!
Kamala	golden orange orange	spirit water + potash	heat to dissolve heat to dissolve; when cool, add ammonia solution
Madder Root	red	spirit	prepare first in a small amount of ammonia solution
Orlean	yellow orange-red	water spirit	heat to dissolve heat to dissolve
Saffron (real saffron) in strands	yellow yellow	spirit water + borax	heat to dissolve heat to dissolve
Sandalwood	red to orange	spirit + copaiva balsam	heat to dissolve
Onion Skins	old yellow to old gold	water + potash or water + soda	heat to dissolve heat to dissolve

### Manufacturer suggestion:

Please transfer varnish from metal shipping container into glass jar for maximum shelf life.



**ITALIAN BALSAMIC OILS**

The finest varnish from Europe - an old Italian recipe.

description	100 ml #	\$-NET	liter #	\$-NET
Gold Brown	2426-100ML	86.25	2426L	463.27
Italian Amber	2425-100ML	86.25	2425L	463.27
Italian Brown	2424-100ML	86.25	2424L	463.27
Italian Colorless For Coating	2430-100ML	86.25	2430L	463.27
Italian Colorless For Mixing	2420-100ML	86.25	2420L	421.15
Italian Gold Yellow	2422-100ML	86.25	2422L	463.27
Italian Ground Varnish	2410-100ML	73.18	2410L	463.27
Italian Red	2423-100ML	86.25	2423L	463.27
Italian Thinner	2440-100ML	21.57	2440L	116.53
Italian Yellow	2421-100ML	86.25	2421L	463.27
Red Brown	2427-100ML	86.25	2427L	463.27

**SPIRIT VARNISH IA "SILKY" (MATTE FINISH)**

description	100 ml #	\$-NET	liter #	\$-NET
Amber	1425-100ML	42.91	1425L	191.22
Black	1428-100ML	42.91	1428L	191.22
Brown	1424-100ML	42.91	1424L	191.22
Colorless Coating	1430-100ML	42.91	1430L	191.22
Colorless Mixing Varnish	1420-100ML	42.91	1420L	191.22
Golden Brown	1426-100ML	42.91	1426L	191.22
Golden Yellow	1422-100ML	42.91	1422L	191.22
Ground Varnish	1410-100ML	42.91	1410L	191.22
Red	1423-100ML	42.91	1423L	191.22
Red Brown	1427-100ML	42.91	1427L	191.22
Yellow	1421-100ML	42.91	1421L	191.22

Spirit Varnish - 250 ml	1400-250ML	13.51
Spirit Varnish - 500 ml	1400-500ML	17.86
Spirit Varnish - 1 liter	1400L	28.11

**PROPOLIS (ITALIAN SPIRIT) VARNISH**

description	100 ml #	\$-NET	liter #	\$-NET
Natural Ground Varnish	1510-100ML	73.40	1510L	403.80
Amber Color Varnish	1525-100ML	73.40	1525L	403.80
Brown Color Varnish	1524-100ML	73.40	n/a	n/a
Colorless Color Varnish	1520-100ML	73.40	1520L	403.80
Golden Brown Color Varnish	1526-100ML	73.40	n/a	n/a
Golden Yellow Color Varnish	1522-100ML	73.40	n/a	n/a
Red Color Varnish	1523-100ML	73.40	n/a	n/a
Red Brown Color Varnish	1527-100ML	73.40	n/a	n/a
Yellow Color Varnish	1521-100ML	73.40	n/a	n/a
Natural Coating Varnish	1530-100ML	73.40	n/a	n/a

**VOLATILE OIL VARNISH**

(Aetherischen Öllack) A soft, elastic oil varnish of finest quality with balsams, volatile oils, and propolis. Very fast drying.

description	100 ml #	\$-NET	liter #	\$-NET
Natural Ground Varnish	2310-100ML	67.96	2310L	421.12
Brown Color Varnish	2324-100ML	67.59	n/a	n/a
Colorless Color Varnish	2320-100ML	67.96	2320L	376.15
Golden Brown Color Varnish	2326-100ML	86.67	n/a	n/a
Golden Yellow Color Varnish	2322-100ML	67.96	n/a	n/a
Red Color Varnish	2323-100ML	67.96	n/a	n/a
Red Brown Color Varnish	2327-100ML	67.96	n/a	n/a
Yellow Color Varnish	2321-100ML	67.96	n/a	n/a
Natural Coating Varnish	2330-100ML	67.96	2330L	376.15
Thinner (250 ml)	2340-250ML	22.44	2340L	53.80

**250 ml****100 ml****1000 ml****500 ml****Manufacturer suggestion:**

Please transfer varnish from metal shipping container into glass jar for maximum shelf life.

**CONVERSION CHART**

100 ml	=	100 ccm
100 ml	=	3.3824 oz
250 ml	=	8.456 oz
500 ml	=	16.912 oz
1 liter (l)	=	1.057 quarts



**STANDARD OIL VARNISHES & SOLVENTS**

no.	description	amount	\$-NET
2225-100ML	Amber	100 ml	39.64
2225L	Amber	1 Liter	170.75
2228-100ML	Black	100 ml	39.64
2228L	Black	1 Liter	170.75
2224-100ML	Brown	100 ml	39.64
2224L	Brown	1 Liter	170.75
2210-100ML	Colorless Primer For Oil Varnish	100 ml	38.96
2210L	Colorless Primer For Oil Varnish	1 Liter	170.75
2230-100ML	Colorless, For Coating	100 ml	36.92
2230L	Colorless, For Coating	1 Liter	170.75
2220-100ML	Colorless Varnish, For Mixing	100 ml	39.64
2220L	Colorless Varnish, For Mixing	1 Liter	170.75
2229-100ML	Dark Brown	100 ml	36.92
2229L	Dark Brown	1 Liter	170.75
2226-100ML	Golden Brown	100 ml	39.64
2226L	Golden Brown	1 Liter	170.75
2222-100ML	Golden Yellow	100 ml	39.64
2222L	Golden Yellow	1 Liter	170.75
2223-100ML	Red	100 ml	39.64
2223L	Red	1 Liter	170.75
2227-100ML	Red Brown	100 ml	36.92
2227L	Red Brown	1 Liter	170.75
2221-100ML	Yellow	100 ml	39.64
2221L	Yellow	1 Liter	170.75
2240-100ML	Solvent (Thinner)	100 ml	17.42
2240-250ML	Solvent (Thinner)	250 ml	20.91
2240-500ML	Solvent (Thinner)	500 ml	31.80
2601-100ML	Dryer (Desiccative) For Oil Varnishes	100 ml	21.57
2120L	Colorless IA	1 liter	243.73

**WATER STAINS**

no.	description	\$-NET
8421-100ML	Stain 421, brown antique, 100 ml	20.14
8421L	Stain 421, brown antique, 1 liter	64.47
8423-100ML	Stain 423, orange, natural, 100 ml	20.42
8402-100ML	Stain 402, antique, brown, 100 ml	18.88
8431-100ML	Stain ebony, intense, spirit soluble, 100 ml	39.99
8431L	Stain ebony, intense, spirit soluble, 1 liter	209.09
8428-100ML	Stain, old gold brown, 100 ml	19.48
8460-100G	Nut stain, brown powder, 100 g	14.17
8427-100ML	Stain, boxwood, 100 ml	20.91

**TOUCH-UP VARNISH  
FOR OIL & SPIRIT VARNISH**

no.	description	\$-NET
1808-100ML	Black, 100 ml	45.74
1804-100ML	Brown, 100 ml	45.74
1800-100ML	Colorless, 100 ml	42.59
1802-100ML	Golden yellow, 100 ml	45.74
1803-100ML	Red, 100 ml	45.74
1840-100ML	Solvent (thinner), 100 ml	19.96
1840L	Solvent (thinner), 100 liter	60.98
1801-100ML	Yellow, 100 ml	42.59

**STANDARD SPIRIT VARNISHES & SOLVENTS**

no.	description	amount	\$-NET
1225-100ML	Amber	100 ml	34.46
1225L	Amber	1 Liter	144.85
1228-100ML	Black	100 ml	37.03
1228L	Black	1 Liter	144.85
1224-100ML	Brown	100 ml	37.90
1224L	Brown	1 Liter	144.85
1210-100ML	Colorless ground varnish	100 ml	35.13
1210L	Colorless ground varnish	1 Liter	161.39
1310-100ML	Ideal Extra 100	100 ml	35.29
1330-100ML	Colorless, for coating	100 ml	36.32
1330L	Colorless, for coating	1 Liter	144.85
1220-100ML	Colorless, for mixing	100 ml	37.03
1220L	Colorless, for mixing	1 Liter	144.85
1229-100ML	Dark Brown	100 ml	37.03
1229L	Dark Brown	1 Liter	144.85
1226-100ML	Golden brown	100 ml	36.32
1226L	Golden brown	1 Liter	144.85
1222-100ML	Golden yellow	100 ml	37.03
1222L	Golden yellow	1 Liter	144.85
1223-100ML	Red	100 ml	37.03
1223L	Red	1 Liter	144.85
1227-100ML	Red Brown	100 ml	37.03
1227L	Red Brown	1 Liter	144.85
1221-100ML	Yellow	100 ml	42.47
1221L	Yellow	1 Liter	144.85
1400-250ML	Solvent (thinner)	250 ml	13.51
1400-500ML	Solvent (thinner)	500 ml	17.86
1400L	Solvent (thinner)	1 liter	28.11

**BALSAMS & VOLATILE OILS**

no.	description	\$-NET
6170-100ML	Balsam of tolu - pure IA, 100 ml	67.74
6005-100ML	Balsam turpentine, 100 ml	11.33
6005L	Balsam turpentine, 1 liter	74.71
6050-100ML	Camphor, natural - Japanese, 100 ml	50.31
6140-100ML	Castor oil, softener, 100 ml	18.95
6010-100ML	Copaiva balsam, pure, 100 ml	53.80
6020-100ML	Eucalyptus oil, pure, 100 ml	52.27
6180-100ML	Grapeseed oil, 100 ml	10.02
6070-100ML	Lavender oil, pure, IA, 100 ml	101.50
6100-250ML	Linseed oil, cold pressed, 250 ml	21.34
6090-250G	Linseed oil, hot processed, 250 ml	12.42
6110-250ML	Linseed oil, stand oil - thickens - used to soften varnish, 250 ml	23.35
6150-100ML	Oil of rosemary, pure IA, 100 ml	101.50
6190-100ML	Spike oil, pure IA, 100 ml	104.17

**ORDER ONLINE !!**  
[www.howardcore.com](http://www.howardcore.com)



**VARNISH COLOR REFERENCE**

Each varnish sample on this page was created in-house using the following procedure:

- 15-year air dried ribs of similar natural color
- Hide glue ground applied a day in advance of first coat
- A total of 3 coats of varnish – 3-day dry time between coats of Spirit, and 6-day dry time between coats of Oil





## RESINS FOR MAKING VARNISH

no.	most are in 100 gram quantities	\$-NET
4040-100G	Amber	54.67
4060-100G	Burgundian Resin	43.12
4110-100G	Buttonlack	16.78
4100-100G	Colophony Powder	16.78
4120-100G	Copal, Manila	13.50
4070-100G	Dammar	12.20
4255-100G	Garnet	25.49
4010-100G	Gum Ammoniac	76.45
4020-100G	Gum Benzoin, In Chunks W/ Almonds Embedded	11.99
4030-100G	Gum Benzoin, Pure Almond	54.89
4080-100G	Gum Elemi, Softener For Spirit Varnish	24.40
4160-100G	Gum Mastic, In Tears, Pure, Clear	156.20
4185-100G	Propolis Liquid, Pure	102.37
4180-100G	Propolis, Bee Resin	135.04
4090-100G	Resin, Pure, Cut Fine, Clear, Light	17.22
4200-100G	Sandarac, Genuine, 100 Gm	31.11
4200-500G	Sandarac, Genuine, 500 Gm	139.39
4150-100G	Seedlac	17.22
4150-500G	Seedlac - 500 Grams	75.58
4260-100G	Shellack, Lemon, Top Quality	17.22
4220-100G	Shellack, White, Dissolves Clearly, De-Waxed	25.38
4280-100G	Sticklac	24.18
4290-100G	Venetian Turpentine, Thick Softener	16.56



4260



4110



4020



4180

## NATURAL DYES FOR MAKING VARNISHES

no.	most are in 100 gram quantities	\$-NET
5040-100G	Asphalt, Syrian, brown	11.99
5060-100G	Campeachy wood, dark red, yellow	16.98
5070-100G	Catechu, brown	16.98
5210-10G	Cochineal red - 10 grams	15.47
5105-100G	Dragon's blood, powder, red	152.46
5100-100G	Dragon's blood, red	152.46
5140-100G	Guaiac resin, brown	186.66
5200-100G	Madder root, powder, red	18.08
5240-100G	Red sandalwood	29.73
5175-100G	Yellowwood, cut, yellow powder	15.47



5150



5190



5220



5060

**ANILINE DYES, SOLUBLE IN SPIRIT**

no.	4 gram per package	NET/pkg
3005	Amber Yellow	17.03
3050	Black	22.41
3070	Blue	18.37
3055	French Red	18.41
3032	Golden Brown, Light	17.03
3001	Golden Yellow	17.43
3095	Green	20.83
3059	Mahogany Red, Dark	17.03
3058	Mahogany Red, Light	17.43
3027	Maroon	21.59
3006	Nut Brown	17.43
3034	Orange	18.80
3013	Red Brown	17.43
3056	Scarlet	17.43
3009	Warm Brown	17.85
3007	Yellow	17.43
3002	Yellow Brown	17.03

**3001 Gold Yellow****3009 Warm Brown****3095 Green****ANILINE DYES, SOLUBLE IN TURPENTINE FOR OIL VARNISH**

no.	4 grams per package	NET/pkg
3533	Black	18.73
3536	Blue	18.73
3535	Orange	18.73
3532	Red	18.73
3531	Yellow	18.73

**ANILINE DYES, SOLUBLE IN WATER**

no.	description	NET/pkg
3115	Amber yellow - 10 grams	16.38
3150	Black - 10 grams	18.73
3138	Blue - 4 grams	18.73
3157	French red - 10 grams	16.38
3120	Golden brown - 10 grams	18.73
3100	Golden yellow - 10 grams	18.73
3116	Light oak brown - 10 grams	18.73
3121	Mahogany brown, light - 10 grams	18.73
3156	Mahogany dark red - 15 grams	18.73
3127	Maroon - 15 grams	18.73
3128	Old golden brown - 10 grams	18.73
3108	Old yellow - 10 grams	18.73
3098	Orange - 10 grams	18.73
3169	Red brown - 10 grams	18.73
3117	Rosewood brown - 10 grams	16.38
3142	Scarlet - 4 grams	18.73
3097	Yellowish light brown - 10 grams	18.73

**NITRO STICKS****DISCONTINUED**

The Nitro Stick is a fast drying edge color replacement pen to touch up scratches and dings on string instruments. **THESE ITEMS HAVE BEEN DISCONTINUED - GET THEM WHILE YOU CAN!!**

no.	description	NET
NTS-AMBERBRT	Amber brown tint	9.00
NTS-BRT	Brown tint	9.00
NTS-DKBRT	Dark brown tint	9.00
NTS-WBR	Warm brown	9.00



**ORDER ONLINE !!**  
[www.howardcore.com](http://www.howardcore.com)



## COLOR EXTRACTS (LIQUID)

For all spirit & oil varnishes we sell.

no.	description	\$-NET
2905-100ML	Amber color extract, 100 ml	40.78
2905L	Amber color extract, 1 liter	227.82
2908-100ML	Black color extract, 100 ml	43.78
2910-100ML	Blue color extract, 100 ml	43.78
2904-100ML	Brown color extract, 100 ml	40.78
2904L	Brown color extract, 1 liter	227.82
2906-100ML	Golden brown color extract, 100 ml	43.78
2902-100ML	Golden yellow color extract, 100 ml	41.33
2909-100ML	Green color extract, 100 ml	43.78
2907-100ML	Red brown color extract, 100 ml	41.30
2903-100ML	Red color extract, 100 ml	43.97
2901-100ML	Yellow color extract, 100 ml	40.78



## MISCELLANEOUS ITEMS FOR FINISHING & REPAIR

no.	description	amt.	\$-NET
2602L	Brush cleaner	1 liter	37.90
2602-100ML	Brush cleaner - for all varnishes in this catalog	100 ml bottle	16.46
8631L	Fingerboard oil	1 liter	164.22
7460-100G	Gelatin powder, technical	100 g	12.63
7470-100G	Imitor, for antiquing varnished instruments	100 grams	19.29
7491-100G	Iron sulfate - dryer additive for varnishes which also yields an enhanced brown color.	100 g	8.50
8760-500ML	JOHA buffing paste	500 ml	52.71
AC806	JOHA cleaner/polish	100 ml bottle	23.37
AC806-LITER		1L bottle	76.62
8630-30ML	JOHA fingerboard oil	30 ml bottle	25.27
8611L	JOHA varnish cleaner	1 liter	152.95
8750-500ML	JOHA polishing paste	500 ml	52.71
AC803	JOHA Varnish Cleaner	30 ml bottle	23.45
7420-10G	Lycopodium - mixes w/ varnish to fill pores or cracks	10 g	13.11
2601-100ML	Oil varnish dryer	100 ml	21.57
7430-100ML	Potassium silicate - liquid	100 ml	8.50

## ABRASIVES & POLISHES

no.		quantity	\$-NET
7605-250G	Pumice stone 000 extra fine	250 g	6.75
7620-250G	Rottenstone, fine for buffing (Tripoli)	250 g	9.15
7640-250G	Vienna chalk, for bright polishing	250 g	6.97
7650-250ML	Polishing oil (use with powders above)	250 ml	13.29

## GEWA VARNISHES

no.	description	\$-NET
GW464110	Color Extract For Black, 100 ML	28.41
GW464104	Color Extract For Spirit Varnish	26.94
GW463450	Dull Varnish	24.00
GW463800	Stick Varnish (Stocklack)	50.52
GW464290	Varnish Filler, Spirit Soluble	30.88

ORDER ONLINE !!  
[www.howardcore.com](http://www.howardcore.com)



**STIFF WIPING BRUSH**

With harder bristles for cleaning in corners after buffing.

**DISCONTINUED - WHILE THEY LAST**

no.	size	\$-NET
9704	Size 4	10.02

**GEWA VARNISHING BRUSHES**

no.	description	\$-NET
GW464400	2.5 cm brush width - Special Edition	45.29
GW464450	4 cm brush width - Special Edition	45.90
GW464750	10 mm Metal Free glue brush	10.64
GW464760	14 mm Metal Free glue brush	10.64

**TOUCH-UP BRUSHES**

no.	size	\$-NET
9907	Size 7, pointed synthetic hair. <b>DISCONTINUED</b>	22.65
GW464600	Pointed #2 retouching brush, Red Marten hair	12.54
GW464650	Pointed #4 retouching brush, Red Marten hair	18.32
GW464700	Pointed #6 retouching brush, Red Marten hair	25.27
GW464710	Flat #8 retouching brush, Iltis hair	10.53
GW464730	Flat #20 retouching brush, Iltis hair	35.08

**VARNISH BRUSHES****SYNTHETIC SQUIRREL**

no.	size	\$-NET
9005SS	1/2 "	30.70
9010SS	1 "	37.62
9015SS	1 1/2 "	54.46
9020SS	2 "	64.36
9025SS	2 1/2 "	77.82
9030SS	3 "	90.10

**GOAT**

no.	size	\$-NET
9205B	1/2 "	22.93
9210B	1 "	33.86
9215B	1 1/2 "	72.47
9220B	2 "	74.66





## UPDATES TO WOOD &amp; FINISHING PRODUCTS SECTION

PAGE	DATE	EXPLANATION
G10-G11	1-1-2024	PRICE CHANGE: OLD WOOD FINISHING PRODUCTS
G16	1-18-2024	ITEM #7060-100G NO LONGER AVAILABLE
G6, G8	2-1-2024	PRICE CHANGE: GERMAN FINGERBOARDS, MISC. PURFLING
G18	2-13-2024	NO LONGER AVAILABLE: ITEM #7490-100G
G16	3-1-2024	NO LONGER AVAILABLE: ITEM #5150-100G
G6	3-19-2024	NO LONGER AVAILABLE: ITEM #W11B
G19	5-31-2024	NO LONGER AVAILABLE: ITEM #9900
G19	7-17-2024	ITEM 9908 NO LONGER AVAILABLE
G15	11-11-2024	ITEM 6120 NO LONGER AVAILABLE
G2-G3	12-4-2024	ADDED NEW ITEMS: CORE WOOD
G13	12-4-2024	ADDED 1/4 - 1/10 SIZES FOR ITEM #SW4
G14	12-4-2024	ADDED ITEM #OWG3-35
G22	1-15-2025	PRICE CHANGE: ITEM #7420-10G
G23	1-22-2025	NO LONGER AVAILABLE: ITEM #9706, 9906
G10, G12	2-1-2025	PRICE CHANGE: W11 & W12 PURFLING; GERMAN-MADE FINGERBOARDS
	5-12-2025	PRICE CHANGE: MOST ITEMS - TARIFF ADJUSTMENT
G12-G13	8-1-2025	PRICE CHANGE: NERO FINGERBOARDS, NUTS, SADDLES
MISC	8-1-2025	PRICE CHANGE: MISC. TONEWOOD
MISC	8-28-2025	PRICE CHANGE - MISC ITEMS - TARIFF ADJUSTMENT
MISC	10-28-2025	PRICE CHANGE - MANY FINISHING PRODUCTS
G3-G5	11-25-2025	PRICE CHANGE: MISC ITEMS
G14-G15	1-1-2026	PRICE CHANGE: OLD WOOD ITEMS
G24	1-8-2026	ITEM GW464720 NO LONGER AVAILABLE

