

## TABLE OF CONTENTS

### = WOOD & FINISHING PRODUCTS =

Spruce Tops .....	G2
Maple Backs .....	G3
Neck Blocks, Neck Grafting Blocks, Necks with Scrolls .....	G4
Finished Necks, Ribs .....	G5
Linings, Blocks, Garlands, Purfling .....	G6
Peghole Bushings, Cork, Bass Bars, Soundposts .....	G7
Fingerboards, Nuts, Saddles .....	G8
Core Shop Apron .....	G9
“Old Wood” Finishing Products .....	G10 - G11
Finishing Information .....	G12 - G13
Balsamic Oils & Varnishes .....	G14
Varnishes & Solvents .....	G15
Resins For Making Varnish .....	G16
Natural Dyes For Making Varnish .....	G16
Aniline Dyes .....	G17
Nitro Sticks .....	G17
Polishes, Cleaners, Miscellaneous .....	G18
Brushes .....	G19
Updates (electronic version only) .....	G20



## SPRUCE TOPS

## SPLITS

no.	description	net price
<b>VIOLIN</b>		
TW110-1A	Select quality, old	89.73
TW110-1B	Professional quality	65.80
TW110-1C	Very good quality	35.89
TW110-1D	Good quality	23.93
TW110-1E	Student quality	11.96
TW110-1F	Lowest grade - flawed	6.80
TW110-1S	Finest available, split	CALL

## VIOLA

TW210-1A	Select quality, old	101.69
TW210-1B	Professional quality	77.76
TW210-1C	Very good quality	43.07
TW210-1D	Good quality	28.71
TW210-1E	Student quality	14.36
TW210-1F	Lowest grade - flawed	7.94
TW210-1S	Finest available	CALL

## CELLO

TW310-1A	Select quality, old	658.00
TW310-1B	Professional quality	568.28
TW310-1C	Very good quality	329.00
TW310-1D	Good quality	251.24
TW310-1E	Student quality	137.58
TW310-1F	Lowest grade - flawed	83.75
TW310-1S	Finest available	CALL

## BASS - LIMITED AVAILABILITY

TW410-1B	Professional quality	1,794.56
TW410-1C	Very good quality	897.28
TW410-1D	Good quality	658.00
TW410-1E	Student quality	418.73

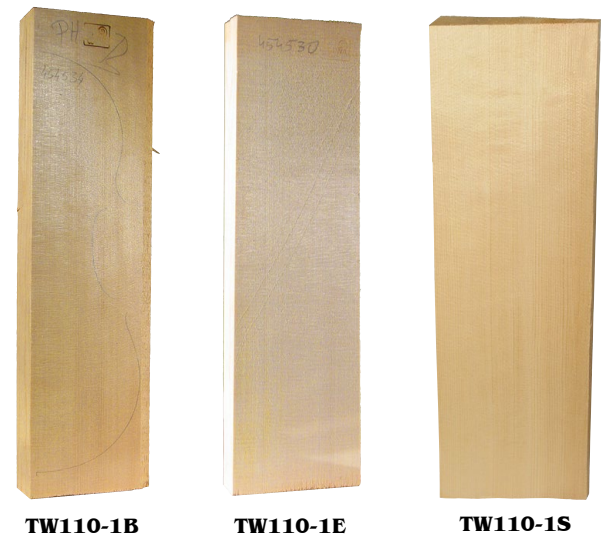
## ROUTED AND JOINED

no.	description	net price
<b>VIOLIN</b>		
TW112-1A	Select quality, old	88.69
TW112-1B	Professional quality	53.21
TW112-1C	Very good quality	41.39
TW112-1D	Good quality	29.56
TW112-1E	Student quality	23.65

## VIOLA - AVAILABLE AS SPECIAL ORDER IN THESE SIZES: 15", 15½", 16", 16½"

TW212-1A	Select quality, old	106.43
TW212-1B	Professional quality	63.86
TW212-1C	Very good quality	49.67
TW212-1D	Good quality	35.48
TW212-1E	Student quality	28.38

## CELLO BY SPECIAL ORDER ONLY



TW310-1A



**MAPLE BACKS - WITH SET OF MATCHING RIBS**

**SPLITS**

no.	description	net price
<b>VIOLIN</b>		
TW120-1A	Exceptional quality - well flamed	221.33
TW120-1B	Professional grade - well flamed	143.56
TW120-1C	Very good quality - flamed	77.76
TW120-1D	Good quality - lightly flamed	41.87
TW120-1E	Student quality - plain	17.95
TW120-1F	Lowest grade - flawed	10.21
TW120-1S	Select quality IA	CALL
<b>VIOLA</b>		
TW220-1A	Exceptional quality - well flamed	269.18
TW220-1B	Professional grade - well flamed	172.28
TW220-1C	Very good quality - flamed	93.32
TW220-1D	Good quality - lightly flamed	50.25
TW220-1E	Student quality - plain	21.53
TW220-1F	Lowest grade - flawed	13.16
TW220-1S	Select quality IA	CALL
<b>CELLO</b>		
TW320-1A	Exceptional quality - well flamed	1,016.92
TW320-1B	Professional grade - well flamed	687.92
TW320-1C	Very good quality - flamed	466.58
TW320-1D	Good quality - lightly flamed	275.17
TW320-1E	Student quality - plain	125.62
TW320-1F	Lowest grade - flawed	77.76
TW320-1S	Select quality IA	CALL
<b>BASS - LIMITED AVAILABILITY</b>		
TW420-1B	Professional grade - well flamed	1,569.75
TW420-1C	Very good quality - flamed	1,312.50
TW420-1D	Good quality - lightly flamed	577.50
TW420-1E	Student quality - plain	519.75

**ROUTED AND JOINED**

no.	description	net price
<b>VIOLIN</b>		
TW122-1A	Exceptional quality - well flamed	165.55
TW122-1B	Professional grade - well flamed	106.43
TW122-1C	Very good quality - flamed	76.86
TW122-1D	Good quality - lightly flamed	41.39
TW122-1E	Student quality - plain	29.56
TW122-1S	Select quality IA	CALL
<b>VIOLA</b>		
TW222-1A	Exceptional quality - well flamed	178.92
TW222-1B	Professional grade - well flamed	122.98
TW222-1C	Very good quality - flamed	150.17
TW222-1D	Good quality - lightly flamed	44.94
TW222-1E	Student quality - plain	29.56
<b>CELLO Fractional sizes also available</b>		
TW322-1A	Exceptional quality - well flamed	CALL
TW322-1B	Professional grade - well flamed	567.60
TW322-1C	Very good quality - flamed	390.23
TW322-1D	Good quality - lightly flamed	319.28
TW322-1E	Student quality - plain	206.94



**ONE-PIECE BACKS ALSO AVAILABLE  
PLEASE INQUIRE**

**ORDER ONLINE !!**  
[www.howardcore.com](http://www.howardcore.com)



## NECK BLOCKS



no.	description	net price
<b>VIOLIN</b>		
TW130-1A	Exceptional quality - well flamed	83.75
TW130-1B	Professional grade - well flamed	53.84
TW130-1C	Very good quality - flamed	29.91
TW130-1D	Good quality - lightly flamed	13.16
TW130-1E	Student quality - plain	8.38
TW130-1F	Lowest grade - flawed	5.98
TW130-1S	Select quality IA	CALL
<b>VIOLA</b>		
TW230-1A	Exceptional quality - well flamed	100.50
TW230-1B	Professional grade - well flamed	65.80
TW230-1C	Very good quality - flamed	35.89
TW230-1D	Good quality - lightly flamed	15.55
TW230-1E	Student quality - plain	12.92
TW230-1F	Lowest grade - flawed	7.18
TW230-1S	Select quality IA	CALL
<b>CELLO</b>		
TW330-1A	Exceptional quality - well flamed	329.00
TW330-1B	Professional grade - well flamed	209.37
TW330-1C	Very good quality - flamed	143.56
TW330-1D	Good quality - lightly flamed	94.51
TW330-1E	Student quality - plain	44.27
TW330-1F	Lowest grade - flawed	29.91
TW330-1S	Select quality IA	CALL
<b>BASS - LIMITED AVAILABILITY</b>		
TW430-1A	Exceptional quality - well flamed <b>DISCONTINUED</b>	
TW430-1C	Very good quality - flamed	508.46
TW430-1D	Good quality - lightly flamed	692.76
TW430-1E	Student quality - plain	215.34
TW430-1F	Lowest grade - flawed <b>DISCONTINUED</b>	



TW130-1A



TW130-1E

## NECK GRAFTING BLOCKS



no.	description	net price
<b>VIOLIN</b>		
TW131-1A	Exceptional quality - well flamed	41.39
TW131-1B	Professional grade - well flamed	23.65
TW131-1D	Good quality - lightly flamed	7.10
<b>VIOLA</b>		
TW231-1A	Exceptional quality - well flamed	53.21
TW231-1B	Professional grade - well flamed	29.56
TW231-1D	Good quality - flamed	14.19
<b>CELLO</b>		
TW331-1A	Exceptional quality - well flamed	266.06
TW331-1B	Professional grade - well flamed	201.03
TW331-1C	Very good quality - flamed	147.81
TW331-1D	Good quality - lightly flamed	106.43



## NECKS WITH SCROLL

no.	description	net price
<b>VIOLIN</b>		
TW132-1A	Exceptional quality - well flamed	124.16
TW132-1B	Professional grade - well flamed	85.20
TW132-1C	Very good quality - flamed	70.95
TW132-1D	Good quality - lightly flamed	37.28
TW132-2D	Good quality - lightly flamed, 3/4	37.28
TW132-1E	Student quality - plain	40.31
<b>VIOLA</b>		
TW232-1A	Exceptional quality - well flamed	153.73
TW232-1B	Professional grade - well flamed	112.34
TW232-1C	Very good quality - flamed	82.78
TW232-1D	Good quality - lightly flamed	47.93
TW232-1E	Student quality - plain	75.62
<b>CELLO</b>		
TW332-1A	Exceptional quality - well flamed	585.75
TW332-1C	Very good quality - flamed	230.59
TW332-1D	Good quality - lightly flamed	177.38
TW332-1E	Student quality - plain - 4/4	135.99
TW332-2E	Student quality - plain - 3/4	135.99
TW332-3E	Student quality - plain - 1/2	135.99
TW332-4E	Student quality - plain - 1/4	121.33

**NECKS WITH SCROLL & FINGERBOARD  
NEXT PAGE ...**



**NECKS WITH SCROLL & FINGERBOARD**

no.	description	net price
<b>VIOLIN</b>		
TW133-1A	Exceptional quality - highly flamed	505.88
TW133-1B	Professional grade - well flamed	260.93
TW133-1C	Very good quality - flamed	181.05
TW133-1C5	Like above, 5-string	202.35
TW133-1D	Good quality - lightly flamed	165.08
TW133-1D5	Like above, 5-string	186.38
TW133-1E	Student quality - plain	149.10
<b>VIOLA</b>		
TW233-1B	Professional grade - well flamed	287.55
TW233-1C	Very good quality - flamed	181.05
TW233-1C5	Like above, 5-string	239.63
TW233-1E	Student quality - plain	186.38
<b>CELLO</b>		
TW333-1A	Exceptional quality - well flamed	931.88
TW333-1C	Very good quality - flamed	766.80
TW333-1D	Good quality - lightly flamed	654.98
TW333-1E	Student quality - plain	575.10



**ALL WOOD SOLD ON THESE PAGES IS EUROPEAN**

**ORDER ONLINE !!**  
[www.howardcore.com](http://www.howardcore.com)

**RIBS (SIDES) BENT**

no.	description	net price
<b>VIOLIN</b>		
TW141-1B	Professional grade - highly flamed	63.90
TW141-1D	Good quality - lightly flamed	38.34
TW141-1E	Student quality - plain	24.50
<b>VIOLA</b>		
TW241-1E	Student quality - plain	28.76
<b>CELLO</b>		
TW341-1C	Very good quality - flamed	170.40



**RIBS (SIDES) STRAIGHT**

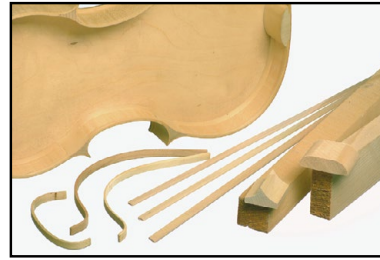
no.	description	net price
<b>VIOLIN</b>		
TW140-1A	Exceptional quality - well flamed	47.86
TW140-1B	Professional grade - well flamed	31.10
TW140-1C	Very good quality - flamed	11.96
TW140-1D	Good quality - lightly flamed	5.99
TW140-1E	Student quality - plain	3.36
TW140-1F	Mismatched sets	1.20
<b>VIOLA</b>		
TW240-1A	Exceptional quality - well flamed	57.42
TW240-1B	Professional grade - well flamed	35.89
TW240-1C	Very good quality - flamed	13.29
TW240-1D	Good quality - lightly flamed	6.65
TW240-1E	Student quality - plain	6.83
TW240-1F	Mismatched sets	1.20
<b>CELLO</b>		
TW340-1A	Exceptional quality - well flamed	179.46
TW340-1B	Professional grade - well flamed	113.65
TW340-1C	Very good quality - flamed	77.76
TW340-1D	Good quality - lightly flamed	53.83
TW340-1E	Student quality - plain	29.91
<b>BASS - LIMITED AVAILABILITY</b>		
TW440-1B	Professional grade - well flamed	287.13
TW440-1C	Very good quality - flamed	221.33
TW440-1D	Good quality - lightly flamed	155.53
TW440-1E	Student quality - plain	107.67

WOOD



**LININGS**

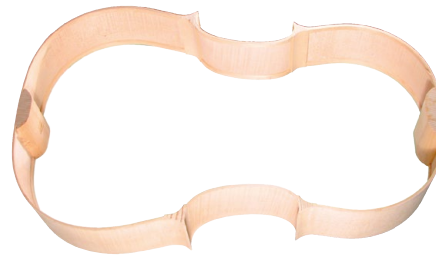
no.	description	net price
TW150	Violin, straight.	4.73
TW152	Violin, BENT. 12 pc.	38.34
TW350	Cello, straight	12.78
TW352	Cello, BENT. 12 pc.	90.53

**BLOCKS**

no.	description	net price
TW160-1	40 x 5.5 x 2 cm	7.10
TW160-2	40 x 3 x 3 cm	7.10
TW160-3	12 x 2.5 x 4.5 cm	6.33
TW160-4	6 pc. block set, pre-cut (violin)	15.98
TW260	6 pc. block set, pre-cut (viola)	20.24
TW360-1	50 x 12 x 3 cm	17.74
TW360-2	50 x 5 x 5 cm	17.74
TW360-3	23 x 4 x 6 cm	15.00

**GARLANDS**

no.	description	net price
TW342-1	Cello garland 4/4	1,777.68
TW342-178	Cello garland 7/8	1,223.80

**PURFLING**

		thickness in mm			
no.	description	black	white	black	net price
<b>VIOLIN</b>					
W11	Straight, Fiber/maple/fiber, 3 pcs. per set.	0.30	0.80	0.30	6.53
W12M	Straight, Maple/maple/maple, 3 pcs. per set.	0.30	0.80	0.30	7.44
W12P	Straight, Maple/pearwood/maple, 3 pcs. set.	0.30	0.80	0.30	8.53
W14	Bent, Ebony/maple/ebony, 12 pcs. per set.	0.31	0.65	0.31	133.11
<b>VIOLA</b>					
W11VA	Straight, Fiber/maple/fiber, 3 pcs. per set.	0.30	0.80	0.30	6.97
W12VAM	Straight, Maple/maple/maple, 3 pcs. per set.	0.30	0.80	0.30	7.62
W12VAP	Straight, Maple/pearwood/maple, 3 pc. per set.	0.30	0.80	0.30	9.08
W14VA	Bent, Ebony/maple/ebony, 12 pcs. per set.	0.40	0.70	0.40	89.08
<b>CELLO</b>					
W11C	Straight, Fiber/maple/fiber, 7 pcs, per set.	0.50	1.00	0.50	18.15
W12C	Straight, Maple/maple/maple, 7 pcs. per set.	0.50	1.00	0.50	19.42
W12CP	Straight, Maple/pearwood/maple, 7 pc. per set	0.50	1.00	0.50	22.69
W14C	Bent, Ebony/maple/ebony, 12 pcs. per set.	0.50	0.90	0.50	148.46
<b>BASS</b>					
W11B	Straight, Fiber/maple/fiber, 10 pcs. per set.	0.50	1.40	0.50	28.09



**MAPLE HAS WHITE MIDDLE, PEARWOOD HAS LIGHT TAN MIDDLE. MEASUREMENTS MAY VARY SLIGHTLY.**



**BOXWOOD PEGHOLE BUSHINGS**

**VIOLIN/VIOLA**



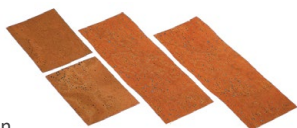
no.	description	net each
BUSH1	Boxwood, tapered to fit our peg shapers.	2.03
BUSHM1	Maple.	2.03
BUSHB1-CYLINDRICAL	Boxwood, cylindrical.	2.92
BUSHM1-CYLINDRICAL	Maple, cylindrical.	5.49

**CELLO**

BUSH3	Boxwood, tapered to fit our peg shapers.	2.58
BUSHM3	Maple.	2.58
BUSHB3-CYLINDRICAL	Boxwood, cylindrical.	5.79
BUSHM3-CYLINDRICAL	Maple, cylindrical.	7.21

**CORK SHEETS**

**VIOLIN/VIOLA**



no.	description	net each
C11-7	Top quality cork sheet, 1/16". 4" x 6".	12.54
C11-8	Same as above, 1/32" sheet. 4" x 6".	10.97
GW434930	1 1/2" x 5" sheet	1.26

**SPRUCE BASS BARS**

**VIOLIN 300 X 20 X 8**



no.	description	net price
BB1IA	Selected quality	8.32
BB1	Good quality	5.38
BB1-II	Lowest quality	2.27

**VIOLA 350 X 20 X 8**

BB2IA	Selected quality	9.03
BB2	Standard quality	6.34
BB2-II	Lowest quality	2.63

**CELLO 630 X 35 X 12**

BB3IA	Selected quality	21.48
BB3	Standard quality	10.71
BB3-II	Lowest quality	5.56

**BASS 900 X 50 X 30**

BB4IA	Selected quality	50.97
BB4	Standard quality	25.48
BB4-II	Lowest quality	12.44

**SOUNDPOSTS**

**VIOLIN**



no.	description	net each
SW1IA	Selected quality. 4/4 (6.2 mm - 6.3 mm)	10.77
SW1IA-2	Selected quality. 3/4 (5.7 mm - 5.8 mm)	10.77
SW1IA-3	Selected quality. 1/2 (5.4 mm - 5.5 mm)	10.77
SW1IA-4	Selected quality. 1/4 (5.2 mm - 5.3 mm)	10.77
SW1-1	Better quality. 4/4 (6.2 mm - 6.3 mm)	6.58
SW1-2	Better quality. 3/4 (5.7 mm - 5.8 mm)	6.58
SW1-3	Better quality. 1/2 (5.4 mm - 5.5 mm)	6.58
SW1-4	Better quality. 1/4 (5.2 mm - 5.3 mm)	6.58
SW1-5	Better quality. 1/8 (4.7 mm - 4.8 mm)	6.58
SW1-II-1	Standard quality. 4/4 (6.2 mm - 6.3 mm)	5.02
SW1-II-2	Standard quality. 3/4 (5.7 mm - 5.8 mm)	5.02
SW1-II-3	Standard quality. 1/2 (5.4 mm - 5.5 mm)	5.02
SW1-II-4	Standard quality. 1/4 (5.2 mm - 5.3 mm)	5.02
SW1-II-5	Standard quality. 1/8 (4.7 mm - 4.8 mm)	5.02

**VIOLA**

SW2IA	Selected quality. 4/4 (7.0 mm).	11.66
SW2IA-2	Selected quality. 3/4 (6.5 mm).	11.66
SW2	Better quality. 4/4 (7.0 mm).	7.36
SW2-2	Better quality. 3/4 (6.5 mm).	7.36
SW2-II	Standard quality. 4/4 (7.0 mm).	5.74
SW2-II-2	Standard quality. 3/4 (6.5 mm).	5.74

**CELLO**

SW3IA-1	Selected quality. 4/4 (11 mm).	16.39
SW3IA-12	Selected quality. 12 mm	16.39
SW3IA-13	Selected quality. 13 mm	16.39
SW3IA-2	Selected quality. 3/4 (10.5 mm)	15.73
SW3IA-3	Selected quality. 1/2 (9.5 mm).	15.73
SW3-1	Better quality. 4/4 (11 mm).	9.69
SW3-1-12	Better quality. 4/4 (12 mm).	9.69
SW3-1-13	Better quality. 4/4 (13 mm).	9.69
SW3-2	Better quality. 3/4 (10.5 mm).	9.69
SW3-3	Better quality. 1/2 (9.5 mm).	9.69
SW3-4	Better quality. 1/4 (9.0 mm).	9.69
SW3-II-1	Standard quality. 4/4 (11 mm).	8.67
SW3-II-2	Standard quality. 3/4 (10.5 mm).	8.67
SW3-II-3	Standard quality. 1/2 (9.5 mm).	8.67

**BASS** - Bass soundpost wood is: 3/4 = 19 mm; 1/2 = 16 mm

SW4IA-2	Selected quality. 3/4	19.44
SW4IA-3	Selected quality. 1/2	19.44
SW4-2	Better quality. 3/4	12.86
SW4-3	Better quality. 1/2	12.86
SW4-II-2	Standard quality. 3/4	10.41
SW4-II-3	Standard quality. 1/2	10.41

Violin, viola and cello soundpost sticks all approximately 400 mm long. Bass soundpost sticks approximately 300 mm long.

Each stick yields 6 posts for violin/viola, 2 cello, 1 bass.



## FINGERBOARDS

## VIOLIN

no.	description	NET
VF10-1A	"A" quality ebony. Indian. 4/4.	27.72
VF10-1B	"B" quality ebony. Indian. 4/4.	19.40
VF10-1C	"C" quality ebony. Indian. 4/4.	11.09
VF10-2B	"B" quality ebony. Indian. 3/4.	19.40
VF10-3B	"B" quality ebony. Indian. 1/2.	19.40
VF10-4B	"B" quality ebony. Indian. 1/4.	19.40

**German Made:**

VFH	Hardwood stained black. 1/8 - 4/4.	17.84
VF01	Lower grade ebony. 4/4.	27.23
VF1	Fine ebony. 1/8 - 4/4.	38.48
VF1P	Polished ebony. 4/4.	44.83
VF2	Better ebony. 4/4.	55.72
VF3	Finest ebony. 4/4.	73.51
VFIA	Selected Ceylon ebony. 4/4.	91.66
VFV	Five string violin, quality like VF 1P.	54.24

## VIOLA

no.	description	NET
VLF20-1A	"A" quality ebony. Indian. 4/4.	33.26
VLF20-1B	"B" quality ebony. Indian. 4/4.	23.28
VLF20-1C	"C" quality ebony. Indian. 4/4.	13.30

**German Made:**

VLF1	Good ebony.	46.17
VLF3	Finest ebony.	88.21
VLFIA	Selected Ceylon ebony.	109.99

## CELLO

no.	description	NET
CF30-1A	"A" quality ebony, round. Indian. 4/4.	138.58
CF30-1B	"B" quality ebony, round. Indian. 4/4.	110.86
CF30-2B	"B" quality ebony, round. Indian. 3/4.	110.86
CF30-3B	"B" quality ebony, round. Indian. 1/2.	110.86
CF31-1A	"A" quality ebony, bevel. Indian. 4/4.	138.58
CF31-1B	"B" quality ebony, bevel. Indian. 4/4.	110.86
CF31-1C	"C" quality ebony, bevel. Indian. 4/4.	55.43

**German Made:**

CFH	African hardwood, natural. 1/4.	96.34
CF01	Lower grade ebony. 3/4.	200.70
CF1	Good ebony. 4/4, 1/2.	194.93
CF2	Better ebony. 4/4.	315.36

## PLEASE NOTE:

Ebony is getting more scarce and is becoming more difficult to source. You must expect to see brown streaks in most lower priced fingerboards today. Even the best ebony will sometimes have less than perfect black. We sell the finest now made from all around the world so you can be certain that what you receive is the best possible in that particular price range.



## BASS

no.	description	NET
BF40-1A	"A" quality ebony, round. Indian. 4/4.	388.02
BF40-2A	"A" quality ebony, round. Indian. 3/4.	388.02
BF40-2B	"B" quality ebony, round. Indian. 3/4.	291.02
BF40-2C	"C" quality ebony, round. Indian. 3/4.	207.87
BF41-1B	"B" quality ebony, bevel. Indian. 4/4.	291.02
BF41-2A	"A" quality ebony, bevel. Indian. 3/4.	388.02
BF41-2B	"B" quality ebony, bevel. Indian. 3/4.	291.02
BF41-2C	"C" quality ebony, bevel. Indian. 3/4.	207.87
BF41-3B	"B" quality ebony, bevel. Indian. 1/2.	291.02

**German Made:**

BF1	Good ebony. 1/4.	405.83
-----	------------------	--------



## SADDLES

no.	description	NET
SA1	Violin, finished	1.33
SA2	Viola, finished	1.33
SA3	Cello, finished	4.05
SA4	Bass, finished	7.65
SA10	Violin, unfinished	0.72
SA20	Viola, unfinished	0.72
SA30	Cello, unfinished	3.11
SA40	Bass, unfinished	5.88

## FINGERBOARD NUTS, EBONY

no.	description	NET
FN1	Violin, finished	1.22
FN2	Viola, finished	1.22
FN3	Cello, finished	3.51
FN4	Bass, finished	6.97
FN10	Violin, unfinished	0.72
FN20	Viola, unfinished	0.72
FN30	Cello, unfinished	3.11
FN40	Bass, unfinished	5.88





**CORE SHOP APRON**

no.	NET
CORE-APRON	35.00



*The smell of the workshop, the feel of old wood...*

If you're like us, these are more than just pictures - they're a way of life!

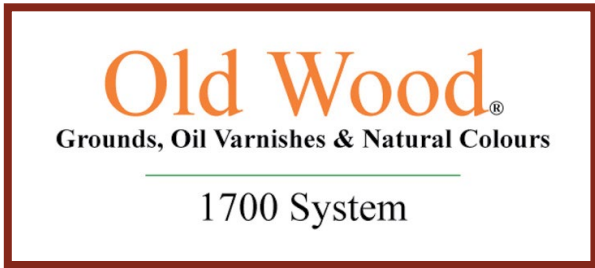
At Howard Core Company, we go to great lengths to ensure that our products are of the highest quality and will fulfill your needs when you are giving your valuable time and effort to your next masterpiece.

Whether the instrument you are repairing is student or master quality, we have what you need to do the job! If you don't see what you need in these pages, call us!



WOOD

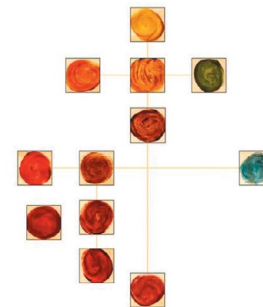




**These finishing products are causing quite a stir among discerning luthiers and woodworking craftsmen. Based upon the original recipes of the old Italian violin-makers, the 1700 System utilizes grounds to prepare the wood, then a special varnish used in tandem with its organic pigment glaze to give the wood a rich, beautiful finish. Made in Spain.**

**WHY SHOULD YOU BUY THE OLD WOOD 1700 SYSTEM?**

- 1. ADDS VALUE TO THE INSTRUMENT** - the 1700 system provides the instrument with an elegant and extraordinary look, adding depth, tone, and a dichromatic effect, enhancing the wood.
- 2. SAVES TIME** - Everything needed to finish the instrument is right here! Also, no milling of colors (hours saved!)
- 3. RELIABILITY** - Homogeneous results, every time - no color variations.
- 4. COST-PERFORMANCE RATIO** - when properly used, the cost of the Old Wood 1700 system is generally between 1% and 5% of the total cost of the instrument! See below for how many instruments can be finished with one 60 cc bottle of:  
 Italian Golden Ground - 10 violins; Imprimatura - 6 violins; Doratura - 8 violins;  
 any Oil Natural Color - 10-11 violins; Varnish - 5 violins.



**WE HAVE USED THIS SYSTEM IN OUR OWN SHOP, WITH TREMENDOUS RESULTS!!**



**OWG1**



**OWG2**



**OWG3**



**OWV1**



**OWV4**

**GROUNDS**

no.	description	qty	\$-NET
OWG1-60	Set of Italian Golden Grounds A and B, one 60 cc bottle of each.	60 cc	120.00
OWG1-125	Set of Italian Golden Grounds A and B, one 125 cc bottle of each.	125 cc	217.50
OWG2-35	Imprimatura Minerale, 35 ml.	35 ml	48.00

**OIL VARNISHES**

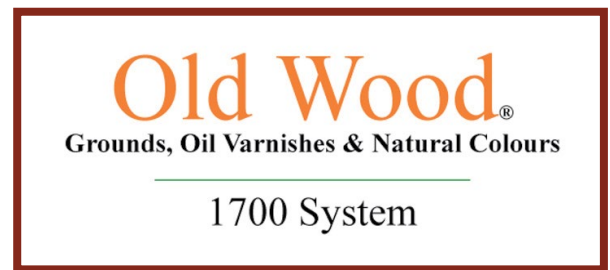
no.	description	qty	\$-NET	qty	\$-NET
OWV1	Classical Amber Varnish	60 cc	78.00	125 cc	124.50
OWV4	Brescia Brown Varnish	60 cc	97.50	125 cc	160.50
OWV5	Cremona Varnish	60 cc	78.00	125 cc	124.50

**SPECIFY AMOUNT WHEN ORDERING !!**

FINISHING



no.	description	qty	\$-NET
OWG4-30	Refractive ground, transparent pale color liquid to generate optical effect of depth.	30 cc	39.00
OWG4-60	Refractive ground, transparent pale color liquid to generate optical effect of depth.	60 cc	69.00



**OIL NATURAL COLORS**

no.	description	qty	\$-NET
OWC1	Weld - Indian Yellow	20 cc	118.50
OWC2	Cosmos - Golden Yellow	20 cc	127.50
OWC3	Cosmos - Golden Oak	20 cc	130.50
OWC4	Pernambuco - Golden Brown	20 cc	133.50
OWC5	Madder Lake - Red	20 cc	121.50
OWC6	Madder Lake - Brown Red	20 cc	133.50
OWC7	Sorghum - Venetian Red	20 cc	130.50
OWC8	Cochineal - Dark Violet	20 cc	121.50
OWC9	Lac Dye - Cherry Red	20 cc	136.50
OWC10	Walnut - Dark Brown	20 cc	130.50
OWC11	Chlorophyll - Green	20 cc	133.50
OWC12	Indigo - Blue	20 cc	130.50



**FOR FURTHER INFORMATION:**

Since we do not finish instruments ourselves, our knowledge of techniques, formulas, etc. is necessarily "second hand", and we do not feel qualified to give advice. There are several excellent books on this subject which we can recommend and they are:

- Violin Varnishes by Hammerl. They make the products! (see pg. I-6)
- Sections of Art and Method of the Violinmaker, Violinmakers Notebook, and Violin Making Step by Step books by Henry Strobel also contain worthwhile varnishing information. (pg. I-8)

All these books, plus many more, are available from us. Please look in the book section of this catalog.

**DOWNLOAD MORE INFORMATION  
ABOUT THE OLD WOOD SYSTEM  
FROM OUR WEBSITE!**



**STAINS AND PRIMERS**

If the unfinished instrument is to have a beautiful basic color, it should be stained before varnishing. But since the hardness of wood can vary, thus absorbing the stain unevenly, it is recommended that the basic instrument should be pre-treated first to ensure that the color is attractively even.

**INSTRUCTIONS FOR PRE-TREATING THE WOOD**

Dissolve about 30 g of gelatin powder in a liter of warm water and then heat until the solution is clear and thin. Apply the warm solution evenly with a bristle brush, leave to dry completely and sand down very carefully with a fine sandpaper. The various stains described below can then be applied.

**INSTRUCTIONS FOR APPLICATION OF WATER-BASED STAINS**

Water-based stains are available in some twenty shades. Dissolve contents of the bag, following the instructions on the label. To make the color lighter or deeper, change the proportion of water used. Apply the stain solution evenly to the cleanly sanded instruments using a sponge or brush. Wipe off excess stain with a dry rag.

**JOHA® ANTIQUE STAIN #421**

Stain #421 - antique gray-brown is a ready-mixed oxidation stain. After application, the color changes under the effect of air and daylight from being colorless to antique gray-brown. This stain is applied exactly as described above. Once the required color has been reached, gently sand with a fine sandpaper and apply one coat of basic varnish. This prevents further modification of the color. Ideally, one should carry out a test stain and varnish to see what the final result will be, since the colors will vary with different types of wood. This stain particularly draws out timber rings.

**JOHA® STAIN #423 & JOHA® STAIN #402 M**

Stain #402 M is a rich brown, ready-made stain which should be used if a dark instrument is required. Stain #423 is a ready-made orange stain made from natural dyes. Use as water-based stains.

**AN INTRODUCTION TO OUR VARNISHES:****SPIRIT VARNISH**

Spirit varnish has always been the varnish most commonly used for stringed instruments. It dries quickly, thus allowing a daily coating. The varnish must be applied quickly, however, in order to prevent the varnish from clouding, especially on color varnish. Every coat must be thoroughly dried before the next coat is applied in order to prevent cracks from materializing later. (Press hard on the varnish with your thumb for a few seconds. If it fails to make a print, then you can apply the next coat.) Spirit varnish can be smoothed well with pumice stone or rottenstone and polished.

**PROPOLIS MIXED VARNISH**

This is an Italian type varnish which, in spite of being a very soft varnish, dries well. After it has been left to dry for a few days it polishes very well. As the name suggests this varnish is partly made up of propolis and is particularly fine quality. Its natural color is an antique yellow. This varnish should be smoothed with rottenstone and polished after it has dried completely, at least 30 days.

**OIL VARNISH, STANDARD QUALITY**

This varnish applies very well. It should be diluted a bit with balsam turpentine (the thinner that is listed with the oil varnishes), despite the fact that it takes a little longer to dry. (Test this also with your thumb to see if it is dry.) Contrary to popular opinion, in the long run, this varnish actually becomes somewhat harder than spirit varnish. You can smooth this varnish with pumice stone or rottenstone and work it to a gentle shine with polish and oil.

**VOLATILE OIL VARNISH**

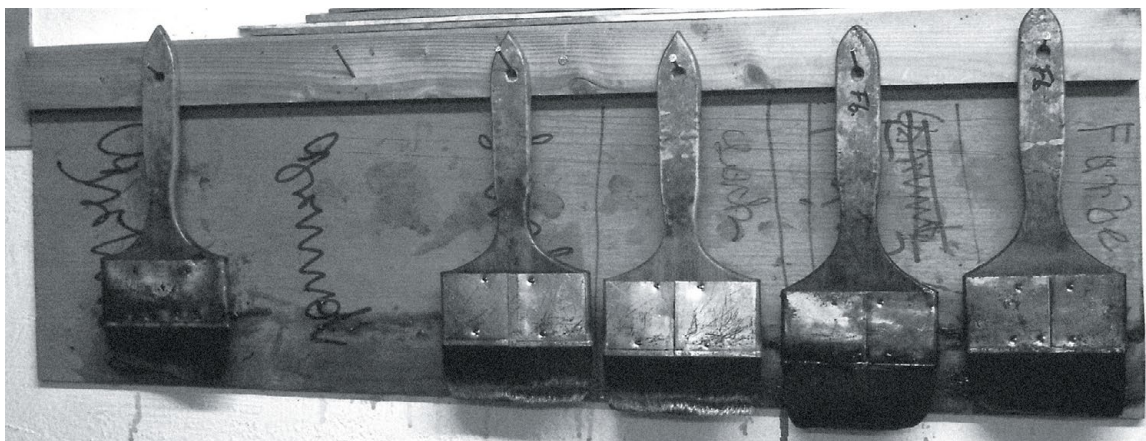
An outstanding oil varnish made with balsams and volatile oils which dries much faster than normal oil varnishes. As a result, however, it is not as easy to apply as normal oil varnish. Because it contains propolis, it stays elastic for a long time and allows the wood to vibrate properly. However, this means that volatile oil varnish may remain sensitive to heat and pressure even after years. After the last coat has dried (thirty days to six weeks) the volatile oil varnish can be smoothed with tripoli powder and polished.

**RETOUCHING VARNISH**

This is ideal for repairing damaged varnish on musical instruments. It is made using selected resins and a special solvent, thus providing excellent adhesion to damaged areas. In order to achieve better cover, retouching varnish has a slightly stronger color. The composition of this special varnish means it is ideal for repairs both to spirit and oil varnishes. The special thinner must be used with the retouching varnish. All colors can be mixed with each other. This varnish should be thickly dabbed or applied to the area to be repaired; leave to dry completely and then sand smooth to match the remaining varnish.

**COLOR EXTRACT**

Color extract is a liquid, light-resistant, transparent color for tinting colorless varnishes, although it can also be used with all other spirit, oil and synthetic resin varnishes. The colors can be mixed with each other, so that any desired shade may be matched. The liquid may be added directly to the varnish. This color extract is superior to spirit and oil soluble powders as it is much more resistant to light.



A list of dyeing resins, their color and solvents is shown below. This is a general overview and is intended as a guide. Please experiment yourself, using potash, ammonia solution, iron chloride, etc. A detailed description of the resins and dyeing resins is given in the book "VIOLIN VARNISH" by Hammerl. (See book section - item # BOOKH102.)

DYEING RESIN	COLOR	SOLVENT	COMMENTS
Acaroid Resin	red	spirit	
Alkanna Root or alkanet	red	spirit turpentine volatile oils	may turn slightly bluish
Alicarin = madder	as for madder root but more highly concentrated		
Aloe	yellowish-brown to brown	spirit water	heat to dissolve heat to dissolve
Asphalt	brown	spirit - acetone mixture add spirit	make into paste
Logwood extract	black	water	Boil up logwood extract + iron vitriol. Place wood in solution and if possible boil with it.
Campeachy Wood aka fogwood	dark red yellow	water spirit	heat to dissolve heat to dissolve
Catechu	warm brown brown to red-brown	water spirit	heat to dissolve heat to dissolve
Cochineal	red	spirit + spike oil	Reduce to powder and heat to dissolve. Caution: easily turns violet.
Curcuma Root	yellow	spirit	heat to dissolve
Dragon's Blood	red	spirit volatile oils	heat to dissolve heat to dissolve
Safflower	yellowish-orange yellow reddish-yellow	water + soda water + potash spirit	boil up boil up heat to dissolve
Pernambuco or redwood	Yellowish-brown to reddish-brown golden yellow	water + potash spirit	boil up heat to dissolve
Gallnut	black	water + iron chloride	boil up
Yellow Wood Extract liquid	yellow yellow	spirit water	readily soluble
Guaiacum	brown	spirit	heat to dissolve
Gambage	yellow	spirit	heat to dissolve Caution: TOXIC!
Kamala	golden orange orange	spirit water + potash	heat to dissolve heat to dissolve; when cool, add ammonia solution
Madder Root	red	spirit	prepare first in a small amount of ammonia solution
Orlean	yellow orange-red	water spirit	heat to dissolve heat to dissolve
Saffron (real saffron) in strands	yellow yellow	spirit water + borax	heat to dissolve heat to dissolve
Sandalwood	red to orange	spirit + copaiva balsam	heat to dissolve
Onion Skins	old yellow to old gold	water + potash or water + soda	heat to dissolve heat to dissolve

**Manufacturer suggestion:**

Please transfer varnish from metal shipping container into glass jar for maximum shelf life.



**ITALIAN BALSAMIC OILS**

The finest varnish from Europe - an old Italian recipe.

description	100 ml #	\$-NET	liter #	\$-NET
Gold Brown	2426-100ML	65.34	2426L	350.96
Italian Amber	2425-100ML	65.34	2425L	350.96
Italian Brown	2424-100ML	65.34	2424L	350.96
Italian Colorless For Coating	2430-100ML	65.34	2430L	350.96
Italian Colorless For Mixing	2420-100ML	65.34	2420L	350.96
Italian Gold Yellow	2422-100ML	65.34	2422L	350.96
Italian Ground Varnish	2410-100ML	65.34	2410L	350.96
Italian Red	2423-100ML	65.34	2423L	350.96
Italian Thinner	2440-100ML	16.34	2440L	88.28
Italian Yellow	2421-100ML	65.34	2421L	350.96
Red Brown	2427-100ML	65.34	2427L	350.96

**SPIRIT VARNISH IA "SILKY" (MATTE FINISH)**

description	100 ml #	\$-NET	liter #	\$-NET
Amber	1425-100ML	32.51	1425L	144.87
Black	1428-100ML	32.51	1428L	144.87
Brown	1424-100ML	32.51	1424L	144.87
Colorless Coating	1430-100ML	32.51	1430L	144.87
Colorless Mixing Varnish	1420-100ML	32.51	1420L	144.87
Golden Brown	1426-100ML	32.51	1426L	144.87
Golden Yellow	1422-100ML	32.51	1422L	144.87
Ground Varnish	1410-100ML	32.51	1410L	144.87
Red	1423-100ML	32.51	1423L	144.87
Red Brown	1427-100ML	32.51	1427L	144.87
Yellow	1421-100ML	32.51	1421L	144.87

Spirit Varnish - 250 ml	1400-250ML	10.23		
Spirit Varnish - 500 ml	1400-500ML	13.53		
Spirit Varnish - 1 liter	1400L	21.29		

**PROPOLIS (ITALIAN SPIRIT) VARNISH**

description	100 ml #	\$-NET	liter #	\$-NET
Natural Ground Varnish	1510-100ML	55.61	1510L	305.91
Amber Color Varnish	1525-100ML	55.61	1525L	305.91
Brown Color Varnish	1524-100ML	55.61	n/a	n/a
Colorless Color Varnish	1520-100ML	55.61	1520L	305.91
Golden Brown Color Varnish	1526-100ML	55.61	n/a	n/a
Golden Yellow Color Varnish	1522-100ML	55.61	n/a	n/a
Red Color Varnish	1523-100ML	55.61	n/a	n/a
Red Brown Color Varnish	1527-100ML	55.61	n/a	n/a
Yellow Color Varnish	1521-100ML	55.61	n/a	n/a
Natural Coating Varnish	1530-100ML	55.61	n/a	n/a

**VOLATILE OIL VARNISH**

(Aetherischen Öllack) A soft, elastic oil varnish of finest quality with balsams, volatile oils, and propolis. Very fast drying.

description	100 ml #	\$-NET	liter #	\$-NET
Natural Ground Varnish	2310-100ML	51.48	2310L	284.96
Brown Color Varnish	2324-100ML	51.48	n/a	n/a
Colorless Color Varnish	2320-100ML	51.48	2320L	284.96
Golden Brown Color Varnish	2326-100ML	51.48	n/a	n/a
Golden Yellow Color Varnish	2322-100ML	51.48	n/a	n/a
Red Color Varnish	2323-100ML	51.48	n/a	n/a
Red Brown Color Varnish	2327-100ML	51.48	n/a	n/a
Yellow Color Varnish	2321-100ML	51.48	n/a	n/a
Natural Coating Varnish	2330-100ML	51.48	2330L	284.96
Thinner (250 ml)	2340-250ML	17.00	2340L	40.76

**250 ml****100 ml****1000 ml****500 ml****Manufacturer suggestion:**

Please transfer varnish from metal shipping container into glass jar for maximum shelf life.

**CONVERSION CHART**

100 ml	=	100 ccm
100 ml	=	3.3824 oz
250 ml	=	8.456 oz
500 ml	=	16.912 oz
1 liter (l)	=	1.057 quarts



**STANDARD OIL VARNISHES & SOLVENTS**

no.	description	amount	\$/-NET
2225	Amber	100 ml	30.03
2225L	Amber	1 Liter	129.36
2228	Black	100 ml	30.03
2228L	Black	1 Liter	129.36
2224	Brown	100 ml	30.03
2224L	Brown	1 Liter	129.36
2210	Colorless Primer For Oil Varnish	100 ml	30.03
2210L	Colorless Primer For Oil Varnish	1 Liter	129.36
2230	Colorless, For Coating	100 ml	30.03
2230L	Colorless, For Coating	1 Liter	129.36
2220	Colorless Varnish, For Mixing	100 ml	30.03
2220L	Colorless Varnish, For Mixing	1 Liter	129.36
2229	Dark Brown	100 ml	30.03
2229L	Dark Brown	1 Liter	129.36
2226	Golden Brown	100 ml	30.03
2226L	Golden Brown	1 Liter	129.36
2222	Golden Yellow	100 ml	30.03
2222L	Golden Yellow	1 Liter	129.36
2223	Red	100 ml	30.03
2223L	Red	1 Liter	129.36
2227	Red Brown	100 ml	30.03
2227L	Red Brown	1 Liter	129.36
2221	Yellow	100 ml	30.03
2221L	Yellow	1 Liter	129.36
2240-100	Solvent (Thinner)	100 ml	13.20
2240-250	Solvent (Thinner)	250 ml	15.84
2240-500	Solvent (Thinner)	500 ml	24.09
2601	Dryer (Desiccative) For Oil Varnishes	100 ml	16.34
2120L	Colorless IA	1 liter	184.64

**WATER STAINS**

no.	description	\$/-NET
8421	Stain 421, brown antique, 100 ml	15.02
8421L	Stain 421, brown antique, 1 liter	48.84
8423	Stain 423, orange, natural, 100 ml	15.84
8402	Stain 402, antique, brown, 100 ml	15.02
8431	Stain ebony, intense, spirit soluble, 100 ml	32.51
8431L	Stain ebony, intense, spirit soluble, 1 liter	174.24
8428	Stain, old gold brown, 100 ml	15.84
8460	Nut stain, brown powder, 100 g	10.73
8427	Stain, boxwood, 100 ml	15.84

**TOUCH-UP VARNISH FOR OIL & SPIRIT VARNISH**

no.	description	\$/-NET
1808	Black, 100 ml	34.65
1804	Brown, 100 ml	34.65
1800	Colorless, 100 ml	34.65
1802	Golden yellow, 100 ml	34.65
1803	Red, 100 ml	34.65
1840	Solvent (thinner), 100 ml	14.69
1840L	Solvent (thinner), 100 liter	46.20
1801	Yellow, 100 ml	34.65

**STANDARD SPIRIT VARNISHES & SOLVENTS**

no.	description	amount	\$/-NET
1225	Amber	100 ml	28.05
1225L	Amber	1 Liter	109.73
1228	Black	100 ml	28.05
1228L	Black	1 Liter	109.73
1224	Brown	100 ml	28.05
1224L	Brown	1 Liter	109.73
1210	Colorless ground varnish	100 ml	28.55
1210L	Colorless ground varnish	1 Liter	122.27
1310-100ML	Ideal Extra 100	100 ml	26.73
1330	Colorless, for coating	100 ml	28.05
1330L	Colorless, for coating	1 Liter	109.73
1220	Colorless, for mixing	100 ml	28.05
1220L	Colorless, for mixing	1 Liter	109.73
1229	Dark Brown	100 ml	28.05
1229L	Dark Brown	1 Liter	109.73
1226	Golden brown	100 ml	28.05
1226L	Golden brown	1 Liter	109.73
1222	Golden yellow	100 ml	28.05
1222L	Golden yellow	1 Liter	109.73
1223	Red	100 ml	28.05
1223L	Red	1 Liter	109.73
1227	Red Brown	100 ml	28.05
1227L	Red Brown	1 Liter	109.73
1221	Yellow	100 ml	28.05
1221L	Yellow	1 Liter	109.73
1400-250	Solvent (thinner)	250 ml	10.23
1400-500	Solvent (thinner)	500 ml	13.53
1400L	Solvent (thinner)	1 liter	21.29

**BALSAMS & VOLATILE OILS**

no.	description	\$/-NET
6170	Balsam of tolu - pure IA, 100 ml	51.32
6005	Balsam turpentine, 100 ml	8.58
6005L	Balsam turpentine, 1 liter	56.60
6050	Camphor, natural - Japanese, 100 ml	38.12
6140	Castor oil, softener, 100 ml	14.36
6010	Copaiva balsam, pure, 100 ml	40.76
6020	Eucalyptus oil, pure, 100 ml	39.60
6180	Grapeseed oil, 100 ml	7.59
6070	Lavender oil, pure, IA, 100 ml	76.89
6100	Linseed oil, cold pressed, 250 ml	16.17
6090	Linseed oil, hot processed, 250 ml	9.41
6110	Linseed oil, stand oil - thickens - used to soften varnish, 250 ml	17.69
6150	Oil of rosemary, pure IA, 100 ml	76.89
6120	Peru balsam, pure, genuine IA, 100 ml	82.56
6190	Spike oil, pure IA, 100 ml	76.89

**ORDER ONLINE !!**  
[www.howardcore.com](http://www.howardcore.com)



**RESINS FOR MAKING VARNISH**

no.	most are in 100 gram quantities	\$-NET
4040-100G	Amber	41.42
4060-100G	Burgundian Resin	32.67
4110-100G	Buttonlack	12.71
4100-100G	Colophony Powder	12.71
4120-100G	Copal, Manila	10.40
4070-100G	Dammar	9.24
4255-100G	Garnet	19.31
4010-100G	Gum Ammoniac	57.92
4020-100G	Gum Benzoin, In Chunks W/ Almonds Embedded	9.08
4030-100G	Gum Benzoin, Pure Almond	41.58
4080-100G	Gum Elemi, Softener For Spirit Varnish	18.48
4160-100G	Gum Mastic, In Tears, Pure, Clear	127.05
4185-100G	Propolis Liquid, Pure	77.55
4180-100G	Propolis, Bee Resin	102.30
4090-100G	Resin, Pure, Cut Fine, Clear, Light	13.04
4200-100G	Sandarac, Genuine, 100 Gm	23.43
4200-500G	Sandarac, Genuine, 500 Gm	105.60
4150-100G	Seedlac	13.04
4150-500G	Seedlac - 500 Grams	57.26
4260-100G	Shellack, Lemon, Top Quality	13.04
4220-100G	Shellack, White, Dissolves Clearly, De-Waxed	20.63
4280-100G	Sticklac	18.32
4290-100G	Venetian Turpentine, Thick Softener	12.54

**NATURAL DYES FOR MAKING VARNISHES**

no.	most are in 100 gram quantities	\$-NET
5040-100G	Asphalt, Syrian, brown	9.08
5110-100G	Bastard saffron, yellow to yellowish red	20.30
5060-100G	Campeachy wood, dark red, yellow	12.87
5070-100G	Catechu, brown	12.87
5210-10G	Cochineal red - 10 grams	11.72
5105-100G	Dragon's blood, powder, red	115.50
5100-100G	Dragon's blood, red	115.50
5130-100G	Gallnut, for staining black	13.70
5150-100G	Gamboge - TOXIC!!! - yellow	50.66
5140-100G	Guaiac resin, brown	141.41
5180-100G	Kamala, yellow to orange	13.04
5200-100G	Madder root, powder, red	13.70
5240-100G	Red sandalwood	22.52
5175-100G	Yellowwood, cut, yellow powder	11.72



4260



4110



5150



5190



4020



4180



5220



5060





**ANILINE DYES, SOLUBLE IN SPIRIT**

no.	4 gram per package	NET/pkg
3005	Amber Yellow	14.19
3050	Black	14.19
3070	Blue	14.19
3055	French Red	14.19
3032	Golden Brown, Light	14.19
3001	Golden Yellow	14.19
3095	Green	14.19
3059	Mahogany Red, Dark	14.19
3058	Mahogany Red, Light	14.19
3027	Maroon	14.19
3006	Nut Brown	14.19
3034	Orange	14.19
3013	Red Brown	14.19
3056	Scarlet	14.19
3009	Warm Brown	14.19
3007	Yellow	14.19
3002	Yellow Brown	14.19



**3001 Gold Yellow**



**3009 Warm Brown**



**3095 Green**

**ANILINE DYES, SOLUBLE IN TURPENTINE FOR OIL VARNISH**

no.	4 grams per package	NET/pkg
3533	Black	14.19
3536	Blue	14.19
3535	Orange	14.19
3532	Red	14.19
3531	Yellow	14.19

**ANILINE DYES, SOLUBLE IN WATER**

no.	description	NET/pkg
3115	Amber yellow - 10 grams	14.19
3150	Black - 10 grams	14.19
3138	Blue - 4 grams	14.19
3157	French red - 10 grams	14.19
3120	Golden brown - 10 grams	14.19
3100	Golden yellow - 10 grams	14.19
3116	Light oak brown - 10 grams	14.19
3121	Mahogany brown, light - 10 grams	14.19
3156	Mahogany dark red - 15 grams	14.19
3127	Maroon - 15 grams	14.19
3104	Nut brown, dark - 10 grams	14.19
3128	Old golden brown - 10 grams	14.19
3108	Old yellow - 10 grams	14.19
3098	Orange - 10 grams	14.19
3125	Pure brown - 10 grams	14.19
3135	Pure yellow - 10 grams	14.19
3169	Red brown - 10 grams	14.19
3117	Rosewood brown - 10 grams	14.19
3142	Scarlet - 4 grams	14.19
3097	Yellowish light brown - 10 grams	14.19

**NITRO STICKS**

**DISCONTINUED**

The Nitro Stick is a fast drying edge color replacement pen to touch up scratches and dings on string instruments. **THESE ITEMS HAVE BEEN DISCONTINUED - GET THEM WHILE YOU CAN!!**



no.	description	NET
NTS-AMBERBRT	Amber brown tint	9.00
NTS-BRT	Brown tint	9.00
NTS-DKBRT	Dark brown tint	9.00
NTS-WBR	Warm brown	9.00



**ORDER ONLINE !!**  
[www.howardcore.com](http://www.howardcore.com)



**COLOR EXTRACTS (LIQUID)**

For all spirit &amp; oil varnishes we sell.

no.	description	\$-NET
2905-100ML	Amber color extract, 100 ml	33.17
2905L	Amber color extract, 1 liter	172.59
2908-100ML	Black color extract, 100 ml	33.17
2910-100ML	Blue color extract, 100 ml	33.17
2904-100ML	Brown color extract, 100 ml	33.17
2904L	Brown color extract, 1 liter	172.59
2906-100ML	Golden brown color extract, 100 ml	33.17
2902-100ML	Golden yellow color extract, 100 ml	33.17
2909-100ML	Green color extract, 100 ml	33.17
2907-100ML	Red brown color extract, 100 ml	33.17
2903-100ML	Red color extract, 100 ml	33.17
2901-100ML	Yellow color extract, 100 ml	33.17

**MISCELLANEOUS ITEMS FOR FINISHING & REPAIR**

no.	description	amt.	\$-NET
AC804	"Ideal" varnish cleaner	30 ml bottle	15.15
AC804-LITER		1 liter	85.62
2602L	Brush cleaner	1 liter	28.71
2602	Brush cleaner - for all varnishes in this catalog	100 ml bottle	12.71
8631L	Fingerboard oil	1 liter	124.41
7460	Gelatin powder, technical	100 g	9.57
7470	Imitor, for antiquing varnished instruments	100 grams	15.68
7491	Iron sulfate - dryer additive for varnishes which also yields an enhanced brown color.	100 g	6.44
8760	JOHA buffing paste	500 ml	39.93
AC806	JOHA cleaner/polish	100 ml bottle	17.49
AC806-LITER		1L bottle	59.07
8630	JOHA fingerboard oil	30 ml bottle	19.14
8611L	JOHA varnish cleaner	1 liter	124.41
8750	JOHA polishing paste	500 ml	39.93
AC803	JOHA Varnish Cleaner	30 ml bottle	19.14
7420	Lycopodium - mixes w/ varnish to fill pores or cracks	10 g	4.62
2601	Oil varnish dryer	100 ml	16.01
7430	Potassium silicate - liquid	100 ml	6.44
AC800D	Polishing compound. Ideal for mixing with tripoli, rottenstone, or pumice.	<b>LIST PRICED</b>	7.00
AC8001-DELUXE	Polishing compound - 1 gallon.		160.00
AC8005-DELUXE	Polishing compound - 0.5 gallon.		98.00

**ABRASIVES & POLISHES**

no.	description	quantity	\$-NET
7605	Pumice stone 000 extra fine	250 g	5.12
7620	Rottenstone, fine for buffing (Tripoli)	250 g	6.93
7640	Vienna chalk, for bright polishing	250 g	5.28
7650	Polishing oil (use with powders above)	250 ml	10.07

**GEWA VARNISHES**

no.	description	\$-NET
GW464110	Color Extract For Black, 100 MI	25.37
GW464104	Color Extract For Spirit Varnish	24.05
GW463450	Dull Varnish	21.43
GW463800	Stick Varnish (Stocklack)	45.11
GW464290	Varnish Filler, Spirit Soluble	27.57

**ORDER ONLINE !!**  
[www.howardcore.com](http://www.howardcore.com)



**STIFF WIPING BRUSH**

With harder bristles for cleaning in corners after buffing.

**DISCONTINUED - WHILE THEY LAST**

no.	size	\$-NET
9704	Size 4	6.15
9706	Size 6	9.90
9708	Size 8	10.73



**GEWA VARNISHING BRUSHES**

no.	description	\$-NET
GW464400	2.5 cm brush width - Special Edition	29.18
GW464450	4 cm brush width - Special Edition	40.98
GW464750	10 mm Metal Free glue brush	9.50
GW464760	14 mm Metal Free glue brush	9.50



**TOUCH-UP BRUSHES**

no.	size	\$-NET
9900	Size 0, pointed synthetic hair. <b>DISCONTINUED</b>	9.08
9902	Size 2, pointed synthetic hair. <b>DISCONTINUED</b>	9.41
9903	Size 3, pointed synthetic hair. <b>DISCONTINUED</b>	9.90
9904	Size 4, pointed synthetic hair. <b>DISCONTINUED</b>	11.22
9905	Size 5, pointed synthetic hair. <b>DISCONTINUED</b>	13.04
9906	Size 6, pointed synthetic hair. <b>DISCONTINUED</b>	13.53
9907	Size 7, pointed synthetic hair. <b>DISCONTINUED</b>	17.16
9908	Size 8, pointed synthetic hair. <b>DISCONTINUED</b>	17.49
GW464600	Pointed #2 retouching brush, Red Marten hair	8.08
GW464650	Pointed #4 retouching brush, Red Marten hair	11.80
GW464700	Pointed #6 retouching brush, Red Marten hair	22.56
GW464710	Flat #8 retouching brush, Iltis hair	9.40
GW464720	Flat #12 retouching brush, Iltis hair	13.17
GW464730	Flat #20 retouching brush, Iltis hair	31.32
9802	Flat tip, 2 mm. <b>DISCONTINUED</b>	12.21



**VARNISH BRUSHES**

**SYNTHETIC SQUIRREL**

no.	size	\$-NET
9005SS	1/2 "	25.58
9010SS	1 "	31.35
9015SS	1 1/2 "	45.38
9020SS	2 "	53.63
9025SS	2 1/2 "	64.85
9030SS	3 "	75.08

**GOAT**

no.	size	\$-NET
9205B	1/2 "	19.11
9210B	1 "	28.21
9215B	1 1/2 "	60.39
9220B	2 "	62.22



FINISHING



## UPDATES TO WOOD &amp; FINISHING PRODUCTS SECTION

PAGE	DATE	EXPLANATION
G19	12-22-2016	RENUMBER SYNTHETIC SQUIRREL BRUSHES - ADD "SS" TO ITEM #
G7	6-6-2017	ADJUSTED PRICING FOR BASS SOUNDPOSTS
G14-G19	1-1-2018	PRICE INCREASE - MOST FINISHING PRODUCTS
G8	2-1-2018	PRICE INCREASE - GERMAN FINGERBOARDS
G6	2-1-2018	PRICE INCREASE - MISC. PURFLING
G6	5-1-2018	PRICE INCREASE - ITEM #'S W14, W11B
G19	5-1-2018	PRICE INCREASE - GOAT BRUSHES
G6, G19	4-1-2019	PRICE INCREASE - DICTUM ITEMS (GOAT VARNISH BRUSHES, W11B & W14 PURFLING)
MISC	5-1-2019	PRICE INCREASE - MISC ITEMS (SOUNDPOSTS, BASS BARS, TONEWOOD)
G6	3-1-2020	PRICE INCREASE - MISC PURFLING
G8	3-1-2020	PRICE INCREASE - MISC FINGERBOARDS; NUTS & SADDLES
G7	3-1-2020	PRICE INCREASE - BUSHINGS
G7	3-16-2020	PRICE INCREASE - CORK SHEETS C11-7, C11-8
G18	4-22-2020	DISCONTINUED ITEM #7600-250G
G18	4-22-2020	ADDED ITEM #7605-250G
G2-G6	6-23-2020	PRICE INCREASE - MISC TONEWOOD ITEMS
MISC	3-1-2021	PRICE INCREASE: MOST FINISHING PRODUCTS AND TONEWOODS
G7	4-28-2021	PRICE CORRECTION: SW4-3, SW4-II-3
G7, G8	1-1-2022	PRICE INCREASE: BUSHINGS, SADDLES, NUTS, FINGERBOARDS (NOT GERMAN)
G2, G3, G4, G5, G7	4-8-2022	PRICE INCREASE: SPRUCE TOP SPLITS, MAPLE BACK SPLITS, NECK BLOCKS, RIBS (STRAIGHT), SPRUCE BASS BARS, SOUNDPOSTS
	4-29-2022	NEW ITEM: 1310-100ML SPIRIT COATING IDEAL EXTRA 100 ML
G10	5-16-2022	OWG2-50 REPLACED WITH OWG2-35 (35 ML INSTEAD OF 50 ML)
G17	5-16-2022	ITEM #3534 NO LONGER AVAILABLE
G15	7-16-2022	PRICE CHANGE: OIL VARNISHES ITEMS 2210 - 2230
G14-G19	1-1-2023	PRICE CHANGE: MOST FINISHING PRODUCTS - SOME PRICES LOWER!
G6	2-1-2023	PRICE CHANGE: SOME PURFLING ITEMS
G15	4-2-2023	PRICE CHANGE: ITEM #8460, STD. OIL VARNISHES ITEM #S 2210-2230
G14-G19	8-10-2023	PRICE CHANGE: MOST LIQUID FINISHING PRODUCTS (NOT OLD WOOD); SOME BRUSHES
G17	10-3-2023	NITRO STICKS DISCONTINUED
G19	11-28-2023	ITEM #9702 NO LONGER AVAILABLE
G10-G11	1-1-2024	PRICE CHANGE: OLD WOOD FINISHING PRODUCTS
G16	1-18-2024	ITEM #7060-100G NO LONGER AVAILABLE
G6, G8	2-1-2024	PRICE CHANGE: GERMAN FINGERBOARDS, MISC. PURFLING
G18	2-13-2024	NO LOONGER AVAILABLE: ITEM #7490-100G

