

**TABLE OF CONTENTS - INSTRUMENTS**

<b>The Core Adjustment.....</b>	<b>A2 - A7</b>
<b>Violins and Violas .....</b>	<b>A8 - A55</b>
Core Academy .....	A8 - A11
Johannes Köhr .....	A12 - A13
August F. Köhr .....	A14 - A17
Core Conservatory .....	A18 - A19
Core Symphony .....	A26
Core Select .....	A20 - A21, A24 - A25, A27 - A37
Dragon by Core .....	A22 - A23
Romanian .....	A38 - A40
J. Thibouville-Lamy .....	A41
Heinrich Gill .....	A42
Sandner .....	A44 - A45
Höfner .....	A46 - A49
Bieg.....	A50 - A51
Heffler.....	A52 - A53
Aubert Lutherie .....	A54 - A56
White Instruments .....	A57
<b>Cellos .....</b>	<b>A58 - A89</b>
Core Academy .....	A58 - A61
Johannes Köhr .....	A62 - A63
Core Conservatory .....	A64 - A66
August F. Köhr .....	A67 - A68
Core Symphony .....	A70 - A71
Core Select .....	A69, A72 - A73, A76 - A77
Dragon by Core .....	A74 - A75
Romanian .....	A78 - A79
Sandner .....	A80
Höfner .....	A82 - A83
Semmlinger .....	A84 - A85
Heffler .....	A86 - A87
Aubert Lutherie .....	A88 - A89
Bieg.....	A90 - A92
<b>Basses .....</b>	<b>A94 - A110</b>
Core Academy .....	A94 - A100
Core Select.....	A101, A105
Core Conservatory .....	A102
August F. Köhr .....	A103
Core Symphony .....	A104
Romanian .....	A106 - A109
Höfner .....	A110
<b>Artino Carbon Fiber Violin .....</b>	<b>A111</b>
<b>Glasser Composite .....</b>	<b>A112 - A113</b>
<b>Wood Electric Violins.....</b>	<b>A114 - A115</b>
<b>Hidersine Electric Violins .....</b>	<b>A116 - A117</b>
<b>Instrument Cradles and Stands .....</b>	<b>A118 - A119</b>
<b>Updates (electronic version only) .....</b>	<b>A120</b>

## THE CORE ADJUSTMENT

Neck projection, overstand, afterlength, mensur, break angle, bridge mass, post tension, fingerboard concavity, peg taper, string height, plate thickness and bass bar overhang are all common terms for those who work in and around the field of stringed instrument setup and tonal adjustment. However, for those wondering what separates a good violin from a not-so-good violin, it can be an overwhelming amount of information. We must think of it in terms of precise manufacturing and fine tolerances, as we would with any precision machine. Most violin makers strive for exacting detail in their product, sometimes as a result of their own experimentation, and often as acknowledgement of the findings of so many generations of previous makers who've shared in their love of this alluring instrument for centuries before them, but always as a means to creating a beautiful musical instrument with a beautiful voice. Our goal at Howard Core Company then is to reflect that passion in the final stages of preparation before the player actually draws their bow for the first time across their new violin.

It is our job to make sure the precise specifications of the maker are allowed to sing the way they were intended through proper setup, creating a balance between internal and external dimensions in an effort to create an ideal acoustical machine, where partials align and sympathetic vibration only exists to drive the fundamental and expose the instrument's core tone. At Howard Core Company it is our passion, as it is the maker's passion, to craft a musical instrument that is easy to play and does whatever the player demands of it. Most of our setup department employees are musicians, who understand exactly what this means – they've lived it. We are the final makers of our instruments.



# CRAFTSMANSHIP

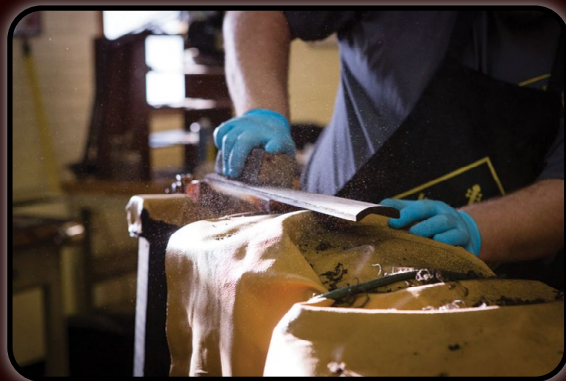
CORE honors the past and leads into the future - Since 1976





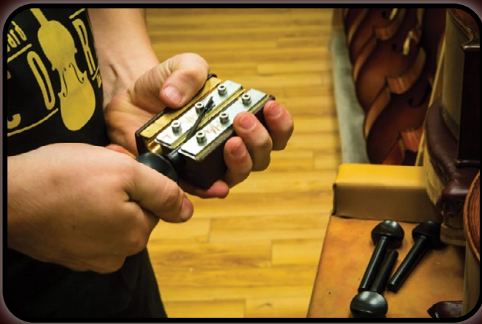
## FINGERBOARDS

Our fingerboard specialists are always up for a challenge. Their job can present some of the biggest hurdles we face. Not all pieces of ebony are a walk in the park to shape. We do our best to clear the pitfalls that Mother Nature throws our way – a constant reminder that no two pieces of wood are exactly alike. Once completed, the board's radius, concavity, thickness, and surface have all been set to very fine tolerances and usually make it past our quality inspection team with flying colors.



**PEGS & ENDPINS**

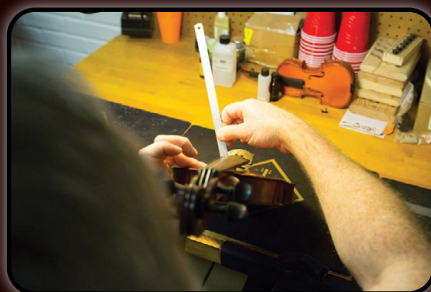
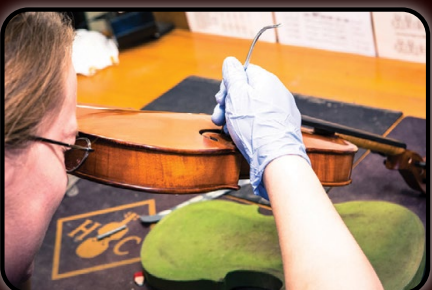
Peg installation is tedious work, with lots of repetition per instrument, and a true demand for consistency unlike any of the other aspects of proper setup. Alignment and overall shape, including length, taper (both pegbox reaming & peg shaping), diameter, string-hole placement, and end-shaping are the primary focal points of the peg installer's work. Once tooled properly, polishing and compounding round out their task. This is also typically the stage at which the end button or endpin is fitted to the instrument. The taper is slightly different from that of the pegs so a different reamer is used to carefully cut the hole to a nice snug fit when the collar just starts to come in contact with the blocked ribs of the instrument.





## BRIDGES & SOUNDPOSTS

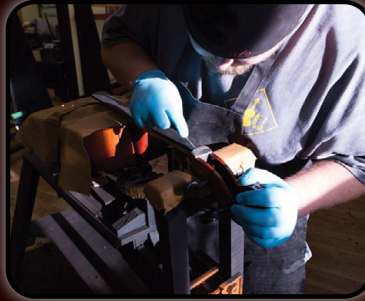
Bridge and soundpost are set by one person since the two of them are so closely related. The bass bar overhang is mimicked by the post, and the distance front-to-back between the post and bridge is critical, as is the post tension. The cutouts, thickness, feet height, and overall shape of the bridge all factor into the instrument's tone quality and playability. This stage of setup usually takes the most time to complete, and always takes a steady hand and a good eye.





## NUT

The nut requires absolute precision since this is not only an aspect of setup that the player will be in constant contact, but one which can also cause damage to the instrument's strings if not shaped properly. With a divider, pencil, knife, files, and varying grits of sandpaper, they set the overall shape, carefully carve the string notches, and set the angle of the strings to gently descend into the pegbox.



## STRINGING & CLEANING

Stringing & Cleaning of the instrument is the last stage before heading off to be inspected. During this process, hand-written labels are installed, and the instrument is meticulously cleaned and strung with the utmost care. The details of final bridge placement and tailgut measurements are made to ensure proper afterlength before the instrument gets a final polishing.



## QUALITY ASSURANCE

Our quality assurance department is the final stage before shipping. This is where our finished product is scrutinized down to the last detail. Both our inspectors are violinists; and both have worked in a variety of setup shops around the country. It is important that they can see a finished violin from both sides – that of the builder, and the performer. Each instrument is run through a 30-point inspection process and then play-tested to ensure we are producing nothing short of a fine musical instrument, designed to last for many years.



*Bridge and Post may be at the heart of violin setup but we believe that all phases of our adjustment are equally important; from the radius, relief, and thickness of our fingerboards, to the depth, taper match, and finishing work on our pegs, there is no stone left unturned by the time our instruments emerge from their journey through our detailed setup facility.*





# Core ACADEMY Series

Start your customers off on the right track! Help beginning players get excited about string instruments, and give budget-conscious customers a worthwhile option. The Core Academy line represents solid craftsmanship and materials, proper setup, and good tone production, all at a value price.

We designed this new A10 model for maximum value. There is always a challenge to compete with the most inexpensive instruments in the global marketplace, but what is sacrificed? What is the line between proper construction and a poor imitation? With the new A10 model we established a basic standard, subjecting it to extensive testing and incredible scrutiny as the 'CORE-A1' model in 2015. After all the evaluations were in, customers agreed it was worth it, and now worthy of 'CORE-A10' designation.

These violins are hand-made, with aged wood, extremely well-constructed with all the right dimensions, then adjusted in our Alabama workshops. This translates into an easy to play violin with quality sound that you can count on. Truly a great value for beginning students, the solid craftsmanship and durability will last year in and year out in your rental fleet.

CORE-A10			
Back Measurements:			
4/4	-	355 mm	1/8 - 267 mm
3/4	-	335 mm	1/10 - 233 mm
1/2	-	311 mm	1/16 - 211 mm
1/4	-	282 mm	(+/- 2 mm)

*All prices include  
our U.S. adjustment*



**CORE-A10**

Item #	Description	\$-List	MAP	
<b>CORE-A10</b> <i>Violin</i>	Student quality violin. Plain maple back and sides, spruce top, inlaid purfling, and ebony fingerboard, nut & saddle. Includes ebony pegs and endbutton, French bridge, composite tailpiece with 4 integrated tuners, side mount chinrest, and D'Addario Prelude strings. 4/4, 3/4, 1/2, 1/4, 1/8, 1/10 & 1/16 sizes available.	540.00	405.35	violin only
		715.00	534.75	outfit
<b>CORE-A20</b> <i>Viola</i>	Student quality viola, like CORE-A10 above. 12", 13", 14", 15", 15 ½" and 16" sizes available.	690.00	517.50	viola only
		905.00	677.05	outfit





# Core ACADEMY Series

Core Academy Violin/Viola Basic Outfit includes our CC397 case, 1076 bow, microfiber polishing cloth, and rosin.

VIOLIN / VIOLA



CORE-A11

## CORE-A11 Back Measurements:

4/4	-	357 mm
3/4	-	338 mm
1/2	-	315 mm
1/4	-	284 mm
1/8	-	273 mm
1/10	-	247 mm
1/16	-	223 mm
(+/- 2 mm)		

Item #	Description	\$-List	MAP	
CORE-A11 <i>Violin</i>	Student quality violin. Plain maple back and sides, spruce top, inlaid purfling, and ebony fingerboard, nut & saddle. Includes ebony pegs and endbutton, French bridge, composite tailpiece with 4 integrated tuners, side mount chinrest, and D'Addario Prelude strings. 4/4, 3/4, 1/2, 1/4, 1/8, 1/10 & 1/16 sizes available.	580.00	435.55	violin only
		745.00	560.65	outfit
CORE-A21 <i>Viola</i>	Student quality viola, like CORE-A11 above. 11", 12", 13", 14", 15", 15 ½", 16" and 16 ½" sizes available.	730.00	547.70	viola only
		935.00	702.95	outfit

# Core ACADEMY Series

Start your customers off on the right track! Help beginning players get excited about string instruments, and give budget-conscious customers a worthwhile option. The Core Academy line represents solid craftsmanship and materials, proper setup, and good tone production, all at a value price.

## CORE-A14

### Back

#### Measurements:

4/4	-	357 mm
3/4	-	338 mm
1/2	-	315 mm
1/4	-	284 mm
1/8	-	273 mm
1/10	-	247 mm
1/16	-	223 mm
(+/- 2 mm)		



CORE-A14

Core Academy Violin/Viola Basic Outfit includes our CC397 case, 1076 bow, microfiber polishing cloth, and rosin.

Item #	Description	\$-List	MAP	
CORE-A14 Violin	Better student quality violin. Lightly flamed maple back and sides, spruce top, inlaid purfling, and ebony fingerboard, nut & saddle. Includes ebony pegs and endbutton, French bridge, composite tailpiece with integrated tuners, side mount chinrest, and D'Addario Prelude strings. 4/4, 3/4, 1/2, 1/4, 1/8, 1/10, & 1/16 sizes available.	725.00	543.40	violin only
		895.00	672.75	outfit
CORE-A24 Viola	Better student quality viola, like CORE-A14 above. 12", 13", 14", 15", 15 ½ ", 16" & 16 ½ " sizes available.	880.00	659.80	viola only
		1,065.00	797.80	outfit





# Core ACADEMY Series

*All prices include  
our U.S. adjustment*

VIOLIN / VIOLA



**CORE-A15E**

*Core Academy Violin/Viola Basic Outfit includes our CC397 case, 1076 bow, microfiber polishing cloth, and rosin.*

Item #	Description	\$-List	MAP	
<b>CORE-A15E</b> <i>Violin</i>	100% European wood! Better student quality violin. Flamed maple back and sides, spruce top, inlaid purfling, and ebony fingerboard, nut & saddle. Includes ebony pegs and endbutton, French bridge, composite tailpiece with integrated tuners, side mount chinrest, and D'Addario Prelude strings. Available sizes: 4/4, 3/4, 1/2, 1/4, 1/8, 1/10, 1/16.	760.00	569.25	violin only
		930.00	698.65	outfit
<b>CORE-A25E</b> <i>Viola</i>	Like above, viola. Available sizes: 12", 13", 14", 15", 15½", 16", 16½".	915.00	685.70	viola only
		1,120.00	840.95	outfit



**JOHANNES KÖHR™ SERIES STUDENT VIOLINS & VIOLAS**

Item #	Description	\$-List	MAP
<b>K500</b> <b>Violin</b>	Better student quality violin. Flamed maple back and sides, spruce top, inlaid purfling, and ebony fingerboard, nut & saddle, ebony pegs and endbutton, French bridge, composite tailpiece with integrated fine tuners, side mount chinrest, and D'Addario Prelude strings. Want all sizes? We have them! 4/4, 7/8, 3/4, 1/2, 1/4, 1/8, 1/10, 1/16, 1/32 & 1/64 sizes available (1/64 special order only). Also 5-string (4/4 only).	930.00	697.35
<b>K500V</b> <b>Viola</b>	Better student quality viola. Flamed maple back and sides, spruce top, inlaid purfling, and ebony fingerboard, nut & saddle includes ebony pegs and endbutton, French bridge, composite tailpiece with integrated fine tuners, side mount chinrest, and D'Addario Prelude strings. 12", 13", 14", 15", 15 ½", 16", 16 ½" & 17" sizes available (17" special order only).	1,090.00	815.65

**K500 Back Measurements:**

4/4	-	356 mm
7/8	-	345 mm
3/4	-	330 mm
1/2	-	317 mm
1/4	-	282 mm
1/8	-	254 mm
1/10	-	228 mm
1/16	-	203 mm
1/32	-	178 mm
(+/- 2 mm)		

*All prices include  
our U.S. adjustment*

**K500**

Good, even tonal quality; plenty of resonance throughout, with fine sound projection. The glossy, rich reddish-brown finish is transparent, showcasing the attractive tonewood.

**K501**  
**Violin**

One-piece nicely flamed maple back in the same finish and craftsmanship level as the K500, this is a premium option setup with upgraded strings. Ebony pegs and endbutton, French bridge, composite tailpiece, side mount chinrest. Thomastik Dominant A, D, & G strings with Pirastro Gold Label E (ball end). 4/4 only.

List \$ 1,045.00

MAP \$ 783.00



**JOHANNES KÖHR™ SERIES STUDENT VIOLINS & VIOLAS**

Johannes Köhr™

Model No.

Serial No.

Jahr

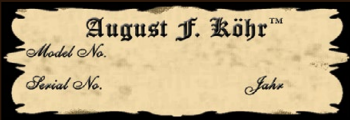
VIOLIN / VIOLA

Item #	Description	\$-List	MAP
<b>K515</b> <b>Violin</b>	This is a visual stunner that shines bright under the showroom lights. The bold antiqued finish is a deep red-brown over a golden ground that gives it a fiery disposition. The tone is also bold, with an extremely clear voice; big sound potential throughout, yet with a uniquely rich quality that carries evenly across all registers. The Johannes Köhr K515 is an excellent instrument for intermediate players seeking more range and personality. Adjusted with Thomastik Dominant A, D, & G strings with Pirastro Gold Label E (ball end). 4/4, 3/4, & 1/2 sizes available. (Fractional sizes set up with Dominant E.)	1,025.00	767.60
<b>K515V</b> <b>Viola</b>	Like the K515, above, 14", 15", 15 ½", 16", & 16 ½" sizes. Adjusted with D'Addario Helicore strings.	1,175.00	879.75





AUGUST F. KÖHR™ SERIES ADVANCING LEVEL VIOLINS & VIOLAS



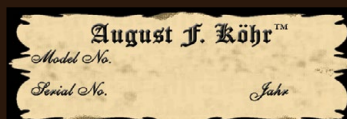
K550

Item #	Description	\$-List	MAP
K550 Violin	August F. Köhr instruments represent a step-up from the step-ups. Crafted with better tonewoods, hand-graduated to produce more resonant acoustic properties, the K550 model is well suited for players who desire an open sound with big projection, medium-voice, rich tone throughout. Quick and easy response. Well-flamed, seasoned maple and choice spruce. Medium satin, red-brown to gold-brown finish. Ebony Parisian eye pegs and endbutton, Despiau "C" level bridge, ebony tailpiece, Guarneri model ebony chinrest, Thomastik Dominant A, D, & G strings with Pirastro Gold Label E (loop end E). 4/4, 3/4 & 1/2 sizes available. (Fractional sizes set up with Dominant E.) 3/4 & 1/2 sizes are by special order only.	1,410.00	1,056.20
K550V Viola	Like the K550, above, 15", 15 1/2", 16", & 16 1/2" sizes. Adjusted with D'Addario Helicore strings.	2,065.00	1,549.70





AUGUST F. KÖHR™ SERIES ADVANCING LEVEL VIOLINS & VIOLAS



VIOLIN / VIOLA



K565

Item #	Description	\$-List	MAP
<b>K565</b> <b>Violin</b>	The texture of the rich, buttery varnish summons the player to draw the instrument closer for thorough inspection. As delightful as the craftsmanship and overall appearance prove to be, with skillful bowing and agile left hand, the K565 violin truly comes to life. From the same workshop as the K515, the K565 kicks everything into a higher gear, from its select, aged tonewoods to the extra detail in the arching and graduation. The bold coloration and shading of the varnish is given extra dimension with its sophisticated texture. Ebony Parisian eye pegs and endbutton, Despiau "B" level bridge, ebony tailpiece, Guarneri model ebony chinrest, Thomastik Dominant A, D, G with Pirastro Gold Label E (loop end). 4/4 only.	1,605.00	1,203.20



AUGUST F. KÖHR™ SERIES ADVANCING LEVEL VIOLINS & VIOLAS



All prices include  
our U.S. adjustment

HC602

Item #	Description	\$-List	MAP
HC602 Violin	Master violin with choice tonewoods, beautiful medium satin, medium reddish-brown to golden-brown finish. Clear, big sound with fine quality, range and projection. When compared to European instruments selling at much higher prices, the value is evident. Only well-seasoned tonewoods are used. This is the violin that was recommended highly in Strings Magazine. Ebony Parisian eye pegs & endbutton, Despiau "B" level bridge, ebony tailpiece, ebony Guarneri chinrest, Thomastik Dominant A, D, G with Pirastro Gold Label E (loop end). One-piece back. 4/4 only.	1,775.00	1,329.50





**AUGUST F. KÖHR™ SERIES ADVANCING LEVEL VIOLINS & VIOLAS**

*All prices include  
our U.S. adjustment*

August F. Köhr™	
Model No.	
Serial No.	Year

VIOLIN / VIOLA



HC622

Item #	Description	\$-List	MAP
<b>HC622</b> <b>Violin</b>	Like the HC602, with "antiqued" varnish and specially selected wood. Medium gloss, medium-to-dark golden-brown finish. Boxwood fittings with Guarneri model chinrest, Despiau "B" level bridge, Pirastro Evah Pirazzi strings (loop end E). Two-piece back. 4/4 & 7/8 sizes available.	1,915.00	1,435.50
<b>HC915V</b> <b>Viola</b>	Like HC622, above, with Aubert "Luxe" bridge and Pirastro Evah Pirazzi strings with Larsen A. Available in 15", 15 ½", 16", 16 ½", & 17" sizes (17" special order only). Two-piece back.	3,385.00	2,536.60



# Core Conservatory Violin & Viola

Core Conservatory



Model

Year

Serial No.

Size

The Core Conservatory instruments help musicians take their playing to the next level. Practicing, lessons, and rehearsals require a student's commitment, and these instruments reward the extra efforts with greater range of tone and dynamics. The luthiers spend more time in carving and shaping the plates for improved acoustic response which helps the player's musical education flourish.

*All prices include  
our U.S. adjustment*



CORE-C10

Item #	Description	\$-List	MAP
<b>CORE-C10</b> Violin	Advancing-level violin with European spruce top, maple back & sides. Includes ebony Parisian eye pegs and endbutton, Despiau "C" level French bridge, ebony tailpiece with E tuner, Guarneri model ebony chinrest, and Thomastik Dominant A, D, & G strings with Pirastro Gold Label E (loop end). 4/4, 3/4, & 1/2 sizes available.	1,275.00	957.35
<b>CORE-C20</b> Viola	Advancing-level viola with European spruce top, maple back & sides. Includes ebony Parisian eye pegs and endbutton, Despiau "C" level French bridge, Wittner tailpiece, Guarneri model ebony chinrest, and D'Addario Helicore strings. 15", 15 1/2", 16", & 16 1/2" sizes available.	1,500.00	1,125.55





# Core Conservatory Violin

Core Conservatory



Model

Year

Serial No.

Size

VIOLIN / VIOLA



CORE-C12

Item #	Description	\$-List	MAP
<b>CORE-C12</b> Violin	Advancing level violin with a bold and broad sound, made of aged spruce top and flamed maple back and sides. The step-up tone quality results from acoustic plates with hand-carved archings and variable thicknesses. The attractive golden-brown varnish is lightly shaded to reveal the natural characteristics of the wood grain. Includes ebony Parisian eye pegs and endbutton, Despiau "C" level French bridge, ebony tailpiece with E tuner, Guarneri model ebony chinrest, and Thomastik Dominant A, D, & G strings with Pirastro Gold Label E (loop end) . 4/4 only.	1,280.00	961.70





**Artisanal. Small-batch. Boutique.** Usually such adjectives are associated with premium prices in the American market. However, these traits can still be found in competitively priced instruments from our Core Select Series.

Over the last 100 years, in every area where there has been a mass production of stringed instruments, a few master makes have broken away from the "factory group" and established themselves in small private workshops. Think of Germans such as Roman Teller, Rudolf Buchner, Bruno Paulus, and a few others.

Now this has happened in China. While the factories make some very nice "step-up" instruments, a few makers who have nothing to do with the large manufacturers have established small workshops where these highly trained masters make very small quantities of artist-level instruments.

The Core Select master makers have often trained in Europe or America, and many have earned awards and medals in various global competitions. Their skill and talent is world-class. Their assistants learn the finer aspects of the craft by working alongside the master over years and years. Like anything made by hand, it's not a quick process, and to do it well takes long-term commitment and patience.

Quantities are limited, but if you have customers requiring very fine instruments you owe it to yourselves and them to have at least one of these on hand as they will represent the finest available in their price ranges. There may also be an opportunity to be an exclusive agent for certain makers in your geographic area.



*All prices include  
our U.S. adjustment*



Item #	Description	\$-List	MAP
CS900 Violin	From the same maker of our CS750 and CS751; the wonderfully transparent varnish is more painstakingly antiqued on this model. The highly figured maple and tight-grain spruce are hand selected.	1,580.00	1,185.95





*All prices include  
our U.S. adjustment*



VIOLIN / VIOLA



Item #	Description	\$-List	MAP
<b>CS1000</b> <b>Violin</b>	Aged spruce, medium flamed maple, attractive red-brown finish slightly opaque for intriguing appearance. Includes boxwood pegs and endbutton, Despiau "C" level French bridge, boxwood tailpiece with E tuner, Guarneri model ebony chinrest, and Thomastik Dominant A, D, & G strings with Pirastro Gold Label E (loop end). 4/4 only.	1,495.00	1,121.25

## DRAGON VIOLINS & VIOLAS

We are proud to carry the instruments made by Zhonglong Sheng of the famous Sheng family, known throughout China and the world for being highly distinguished musicians and violinmakers who take great pride in their artistic craftsmanship. Zhonglong translates literally to "Dragon" and the Core Dragon instruments offer customers bold and auspicious qualities.



by Core

### ALL DRAGON VIOLINS AND VIOLAS ARE AGED 5 YEARS AFTER THEIR CONSTRUCTION AND PRIOR TO VARNISHING



**DR10-VN** - An accessible introduction to the Dragon line, this affordable yet capable instrument possesses all the qualities needed to make a fine performance level instrument: medium-dark tone, fast response and a clear, even voice throughout. The appearance has been a hit with its moderate flaming, mildly antiqued varnish, with a medium brown to red-brown color of medium luster giving it a naturally-worn patina. Boxwood fittings with Guarneri model chinrest, Despiau "C" level bridge, adjusted with Thomastik Dominant A, D, & G strings with Pirastro Gold Label E (ball end). 4/4 size only.

Item #	\$-List
<b>DR10-VN</b>	<b>1,640.00</b>
<b>DR10-VA</b>	<b>1,940.00</b>

**DR10-VA** - Like DR10 violin above, available in 15.5" (395mm), 16" (405mm), and 16.5" (420mm) sizes. Adjusted with D'Addario Helicore strings.

**DR20-VN** - A very nice combination of sweetness and power; responsive at all dynamic levels - a great value in performance-level violins. The maple has more pronounced flaming, and prepared with a golden ground, the amber-brown varnish is gently antiqued for an elegant appearance. Boxwood fittings with Guarneri model chinrest, Despiau "C" level bridge, adjusted with Thomastik Dominant A, D, & G strings with Pirastro Gold Label E (ball end). 4/4 size only.

Item #	\$-List
<b>DR20-VN</b>	<b>1,930.00</b>





## DRAGON VIOLINS & VIOLAS



VIOLIN / VIOLA

**DR30-VN** - For even more dedicated players, the very sweet, dark tone is balanced with power and clarity throughout all registers. Using well-flamed maple and finely grained spruce, the tonewoods are crafted with extra time and effort to produce a wider tonal and dynamic range. The varnish is mildly antiqued warm amber color of medium luster. Ebony fittings with Guarneri model chinrest. Despiau "B" level bridge, Pirastro Evah Pirazzi strings. 4/4 size only.

Item #	\$-List
DR30-VN	2,225.00



### Core "Dragon"

Model No.

Size 4/4

Serial No.

Year



## Dragon by Core

**DR50-VN** - The ultimate Dragon, the bold tone and soloistic projection will make a lasting impression for both the performer and the audience. Beautifully-figured maple, the choicest spruce, and Dragon's finest luthiers combine to create a warm yet brilliantly rich tonal palette with depth and plenty of carrying power. The varnish is tastefully antiqued amber color over a strikingly transparent golden ground. Ebony fittings with Guarneri model chinrest. Despiau "B" level bridge, Pirastro Evah Pirazzi strings (loop E). 4/4 size only.

Item #	\$-List
DR50-VN	2,805.00



*All prices include  
our U.S. adjustment*



CS1150



*All prices include  
our U.S. adjustment*



CS1350

Item #	Description	\$-List	MAP
<b>CS1150</b> <b>Violin</b>	Aged European spruce and flamed maple, reddish-amber varnish, antiqued. Includes ebony Parisian eye pegs and endbutton, Despiau "C" level French bridge, ebony tailpiece with E tuner, Guarneri model ebony chinrest, and Thomastik Dominant A, D, & G strings with Pirastro Gold Label E (loop end).	1,720.00	1,289.45
<b>CS1350</b> <b>Violin</b>	Crafted of Chinese maple and European spruce, tastefully antiqued light gold-brown to gold-amber hand applied spirit varnish. Medium-dark tone color with a strong, clear voice with good projection. Fitted with ebony Parisian eye pegs and endbutton, ebony tailpiece, Despiau "C" level French bridge, and Guarneri model ebony chinrest. Adjusted with Pirastro Evah Pirazzi strings.	2,260.00	1,694.80






*All prices include  
our U.S. adjustment*



Item #	Description	\$-List	MAP
<b>CS1450</b> <b>Violin</b>	Well aged European spruce and nicely flamed maple, rich reddish-amber varnish tastefully antiqued. Includes ebony Parisian eye pegs and endbutton, Despiau "B" level French bridge, ebony tailpiece with E tuner, Guarneri model ebony chinrest, Pirastro Evah Pirazzi strings. 4/4 only.	2,160.00	1,621.50



# Core Symphony Violin

Core Symphony		
Model	Year	
Serial No.		

Take the stage confidently with the Core Symphony model. Built for performance, it has style, power, and the versatility required for orchestral, solo, and chamber music, even contemporary genres.

This model features a well-seasoned spruce top and a one-piece maple back aged at least 7 years! Combined with experienced craftsmanship, the resulting tonal qualities are well-balanced, with both clarity and warmth, refinement and power. From the overture to the final encore, the Core Symphony gives an amazing performance!

All prices include  
our U.S. adjustment



CORE-SM10

Item #	Description	\$-List	MAP
<b>CORE-SM10</b> Violin	Concert level violin with a one-piece maple back aged at least 7 years, and well-seasoned spruce top. Includes ebony Parisian eye pegs and endbutton, Despiau "B" level French bridge, ebony tailpiece with E tuner, Guarneri model ebony chinrest, and Thomastik Dominant A, D, & G strings with Pirastro Gold Label E (loop end). 4/4, 7/8 & 3/4 sizes available. (3/4 size set up with Dominant E.)	2,075.00	1,556.80
<b>CORE-SM20</b> Viola	Concert level viola with nicely flamed two-piece maple back aged at least 7 years, and well-seasoned spruce top. Includes ebony Parisian eye pegs and endbutton, Aubert "Luxe" French bridge, ebony tailpiece with A tuner, Guarneri model ebony chinrest, adjusted with Pirastro Evah Pirazzi D, G, and C strings, with Larsen A (ball end). 15", 15 1/2", 16", & 16 1/2" sizes available.	2,960.00	2,220.95





Amati

All CS2000 models are 4/4 only. Fitted with ebony Parisian eye pegs and endbutton, ebony tailpiece, Despiau "B" level bridge, and Guarneri model ebony chinrest.



Cannon



*All prices include  
our U.S. adjustment*

Item #	Description	\$-List	MAP
<b>CS2000 Amati</b>	The Amati pattern is a perfect smaller-bodied 4/4 pattern. Modeled after the great Nicolo Amati of 17th century Cremona who inspired the next generation of Stradivari and Guarneri, this reproduction is ideal for the player looking for a more comfortable violin, not quite 7/8-size but smaller than traditional 4/4-size, exhibiting a refined and versatile tonal palette. Upon request, this model instrument can be equipped with a Dresden style ebony chinrest which fits the Amati pattern nicely. Adjusted with Pirastro Evah Pirazzi strings (loop end E). Body length - 353 mm; Upper Bout - 158 mm; Lower Bout - 190 mm.	2,515.00	1,884.55
<b>CS2000 Cannon</b>	Soloists worldwide know the original Guarneri del Gesu violins as among the finest creations ever produced, with only Stradivari violins regarded as equals. Niccolo Paganini's "Il Cannone" Guarneri of 1743 was a legendary extension of his technical wizardry. The Core Select "Cannon" model is inspired by the robust, spontaneous workmanship of the original and now available for any player to enjoy. Adjusted with Pirastro Evah Pirazzi strings strings. Body length - 353 mm; Upper Bout - 166 mm; Lower Bout - 206 mm.	2,370.00	1,776.75





Item #	Description	\$-List	MAP
<b>CS2000</b> <b>Kreisler</b>	Not just another Guarneri model, the example from c.1730 played by Fritz Kreisler is considered one of Guarneri del Gesù's first signature creations which marked the beginning of his golden period. The unique outline and arching are bold stylistically and acoustically. This Core Select reproduction is a worthy match for violinists embracing Kreisler's warm and expressive playing style. Adjusted with Pirastro Evah Pirazzi strings. Body length - 355 mm; Upper Bout - 165 mm; Lower Bout - 201 mm.	2,225.00	1,668.95





All CS2000 models are 4/4 only. Fitted with ebony Parisian eye pegs and endbutton, ebony tailpiece, Despiu "B" level bridge, and Guarneri model ebony chinrest.



VIOLIN / VIOLA

*All prices include  
our U.S. adjustment*



Item #	Description	\$-List	MAP
<b>CS2000 Emiliani</b>	Authentic Stradivari violins are still being played by the world's greatest violinists, and the 1703 "Emiliani" Strad is a fine example. Named after a famous 19th-century Italian violinist from Bologna, Cesare Emiliani, the beautiful tone of this violin continues to dazzle audiences around the globe, and inspires this modern interpretation. Adjusted with Pirastro Evah Pirazzi strings. Body length - 354 mm; Upper Bout - 168 mm; Lower Bout - 206 mm.	2,225.00	1,668.95





Item #	Description	\$-List	MAP
CS2000 Goldman	100% European spruce top, classic Strad pattern! 1716 “Goldman” Stradivari is a Golden Period instrument loaned to Yehudi Menuhin as a young prodigy in 1928 by the investment banker Henry Goldman, and then played most famously by Nathan Milstein from 1945 to 1992. This modern day tribute produces a bold and beautiful tone. Adjusted with Pirastro Evah Pirazzi strings (loop end E). Body length - 353 mm; Upper Bout - 167 mm; Lower Bout - 206 mm.	2,745.00	2,057.05







La  
Cathedrale



Soil



All CS2000 models are 4/4 only. Fitted with ebony Parisian eye pegs and endbutton, ebony tailpiece, Despiou "B" level bridge, and Guarneri model ebony chinrest.



Lord Wilton

*All prices include  
our U.S. adjustment*

Item #	Description	\$-List	MAP
<b>CS2000</b> <b>La Cathedrale</b>	The elegant one-piece back of gently-flamed maple catches the eye, and the pure, angelic voice of this Core Select model captures the spirit of Stradivari's 1707 "La Cathedrale". The patiently-seasoned top spruce gives the player a vibrant, flexible response capable of a variety of styles. Adjusted with Pirastro Evah Pirazzi strings. Body length - 354 mm; Upper Bout - 167 mm; Lower Bout - 207 mm.	2,370.00	1,776.75
<b>CS2000</b> <b>Lord Wilton</b>	For musicians that require a deep, dark tone without sacrificing power or brilliance, this Guarneri model is an ideal choice. The powerful G string transitions seamlessly up through all registers to the soloistic E. Based on the 1742 "Lord Wilton", an exceptional late-period Guarneri, the unusual scroll, f-holes, and outline reflect the artist's maturity and confidence. The stunning one-piece back adds to the personality. Adjusted with Pirastro Evah Pirazzi strings. Body length - 354 mm; Upper Bout - 164 mm; Lower Bout - 205 mm.	2,370.00	1,776.75
<b>CS2000</b> <b>Soil</b>	The "Soil" Stradivari of 1714 may be the most seen and heard violin of this generation having been played by the great Itzhak Perlman for nearly 30 years. Named after Amédée Soil, a late 19th century Belgian collector, this is a beautiful reproduction crafted with special care in the archings and graduations for a brilliant, singing quality. The fiery flaming ascends from the center back joint and is highlighted by the rich varnish. These violins speak clearly and quickly with a sparkling, powerful voice ideal for serious players. Adjusted with Pirastro Evah Pirazzi strings. Body length - 352 mm; Upper Bout - 162 mm; Lower Bout - 206.5 mm.	2,370.00	1,776.75



All prices include  
our U.S. adjustment



Item #	Description	\$-List	MAP
CS2350 Violin	Crafted of European maple and European spruce air-dried for at least 10 years, this model has a beautifully antiqued light gold-amber hand applied spirit varnish. The rich medium tone quality boasts the complexity and strong projection required by advancing players. Fitted with ebony Parisian eye pegs and endbutton, ebony tailpiece, Despiau "B" level French bridge, ebony chinrest, and Thomastik Dominant A, D, & G strings with Pirastro Gold Label E (loop end).	3,465.00	2,600.45







*All prices include  
our U.S. adjustment*



CS2900G



CS2900S

Item #	Description	\$-List	MAP
<b>CS2900G</b> <b>Guarneri</b>	Some violins sell themselves with little effort: put in customer's hands, test-play, and sold! The skillful workmanship and tasteful antiquing of the CS2900 model bring to life carefully seasoned tonewoods for a dynamic sound with fullness and depth. Made by the workshop of VSA Gold Medal winner Ming Jiang Zhu, the training and craftsmanship are world-class, using classical European techniques. The Guarneri pattern gives the G-string extra power, and extra tonal dimensions throughout the registers. Boxwood fittings with Guarneri model chinrest and Aubert Mirecourt bridge. Pirastro Evah Pirazzi strings (loop end E). 4/4 only.	4,395.00	3,294.75
<b>CS2900S</b> <b>Strad</b>	The Stradivari pattern imparts a brighter voice, with extra shimmer in the upper registers. Same fittings as above.	4,395.00	3,294.75



CS2900V



*All prices include  
our U.S. adjustment*



CS4375



Item #	Description	\$-List	MAP
<b>CS2900V-TERTIS</b> <i>Tertis</i>	Concert level viola. The Tertis model features wider lower bouts which impart an especially rich and deep lower register. The carefully seasoned spruce and maple are brought to life with skillful workmanship for a dynamic sound and quick response. Made by the workshop of VSA Gold Medal Winner Ming Jiang Zhu, their characteristic orange-red varnish is gently antiqued. Boxwood fittings with Guarneri model chinrest and Aubert Mirecourt bridge. Pirastro Evah Pirazzi D, G, C strings with Larsen A (ball end). 15", 15.5", and 16" sizes.	6,320.00	4,739.45
<b>CS4375</b>		6,955.00	5,218.15







CS5900G

*All prices include  
our U.S. adjustment*



CS5900S

Item #	Description	\$-List	MAP
<b>CS5900S</b> <b>Strad</b> <b>Violin</b>	What happens when you combine internationally-renowned craftsmanship with select European tonewoods? A breathtaking violin with amazing tonal qualities! Well-aged European spruce and maple are crafted by the award-winning makers in the Ming Jiang Zhu workshop, each violin is made by hand using traditional Italian methods to achieve professional-quality tone and range of dynamics. Well-balanced, the G-string has plenty of depth and power which transitions evenly across all strings to a soloistic E-string. Optimal setup with Aubert bridge, boxwood fittings, and Pirastro Evah Pirazzi Gold strings. Stradivari pattern.	9,950.00	7,460.60
<b>CS5900G</b> <b>Guarneri</b> <b>Violin</b>	Guarneri pattern. Same fittings as above.	9,950.00	7,460.60
<b>CS5900V</b> <b>Viola</b>	Like above, Strad model viola. 15", 15 ½", 16" sizes available.	12,130.00	9,099.40





Item #	Description	\$-List	MAP
CS5500 "Ole Bull"	<p>The 1744 "Ole Bull" was made in Guarneri's final year, and is perhaps his last creation. The refined and stately tonal qualities are a surprising contrast to the wild and carefree workmanship, a juxtaposition for which Guarneri is beloved. The original was played famously by the 19th century Norwegian violinist Ole Bull, a virtuoso across Europe and contemporary of Paganini, Schumann, and Liszt.</p> <p>This Core Select model is inspired by the great artistry of both Guarneri and Bull, and with lightning-quick response helps the modern player tackle the most challenging and diverse repertoire. Naturally air-dried for at least 50 years, the Italian spruce and Bosnian maple are crafted with the utmost care in the archings to bring to life an exuberant and pliable voice. Maker adjusted with Aubert DeLuxe bridge, boxwood fittings, and Pirastro Evah Pirazzi Gold strings.</p>	8,815.00	6,611.05





*All prices include  
our U.S. adjustment*



VIOLIN / VIOLA



Item #	Description	\$-List	MAP
<b>CS5500-1720STRAD</b>	Our new 1720 Stradivari violin copy represents some of the best that China has to offer today in the way of fine violins. It's red to golden-brown old-recipe oil varnish is meticulously applied and antiqued down to the finest detail. These instruments are made of Bosnian maple and Italian spruce, both naturally aged for at least 50 years. Their tonal quality is in the dark to medium range with exceptional versatility. They project with great clarity while retaining a warm quality under the player's ear. These are not overly-thinned instruments designed to be tubby sounding right out of the box. The master maker who creates these for Howard Core Company is a world traveler who has studied violin making in many countries, including Italy and the United States. Each violin has been adjusted by the maker using fine boxwood fittings with heart shape pegs, a beautifully cut and fitted Aubert Deluxe bridge, equipped with Pirastro Evah Pirazzi Gold strings.	8,815.00	6,611.05



## ROMANIAN VIOLINS & VIOLAS

The Romanian series offers well-made European instruments at an affordable price. There are still customers who prefer European-made but need to stick to a budget, and these Romanian instruments are a great alternative to more expensive German and French makers. With access to locally-grown tonewoods and an efficient workshop setting, the production costs are kept as economical as possible.



KR10



KR20

Item #	Description	\$-List
<b>KR10</b> <b>Violin</b>	Johannes Köhr student quality violin. Plainly figured maple back, good spruce top. Ebony pegs and endbutton, French bridge, composite tailpiece with integrated tuners, side mount chinrest. D'Addario Prelude strings. 4/4, 3/4, 1/2, 1/4, & 1/8 sizes.	775.00
<b>KR10V</b> <b>Viola</b>	Like KR10, above. 11", 12", 13", 14", 15", 15½ ", 16", and 16½ " sizes available.	1,030.00
<b>KR13</b> <b>Violin</b>	Better entry-level violin made in Romania; durable gold-brown straight varnish; plain European maple and even-grain spruce; ebony fittings and Despiau D-level bridge. A well-crafted instrument for the budding musician.	825.00
<b>KR13V</b> <b>Viola</b>	Like KR13, above. 11", 12", 13", 14", 15", 15½ ", 16", and 16½ " sizes available.	950.00







KR13



KR23



KR28

Item #	Description	\$-List
<b>KR20</b> <i>Violin</i>	August F. Köhr model. A better violin with slightly flamed maple back & fine spruce top; medium satin, orange-golden finish. Even tone throughout. Clean and powerful in the lower registers, brilliant but smooth in upper registers. Ebony Parisian eye pegs and endbutton, Despiau "C" level bridge, ebony tailpiece, ebony Guarneri model chinrest. Thomastik Dominant A, D, G strings with Pirastro Gold Label E (loop end E). 4/4 size only.	1,305.00
<b>KR20V</b> <i>Viola</i>	Like KR20, above, with D'Addario Helicore strings and Wittner composite tailpiece. Available in 15", 15½", 16", & 16½" sizes.	1,600.00
<b>KR23</b> <i>Violin</i>	Step-up Romanian violin; similar gold-brown varnish to the KR13, yet more artfully applied. Nicely figured European maple and tight-grained spruce; ebony fittings, including Parisian-eye pegs and end button, Dominant strings.	1,320.00
<b>KR23V</b> <i>Viola</i>	Like KR23, above, with D'Addario Helicore strings and Wittner composite tailpiece. Available in 15", 15½", 16", & 16½" sizes.	1,450.00
<b>KR28</b> <i>Violin</i>	Intermediate Romanian violin; similar to KR23, with beautifully figured Maple.	1,625.00

## ROMANIAN VIOLINS

*All prices include  
our U.S. adjustment*



KR30



KR60

Item #	Description	\$-List
<b>KR30</b> Violin	August F. Köhr model. Better graduated top and back of selected spruce and well-flamed maple. The warm, pleasant character of sound is perfectly suited to orchestral and chamber music, and for soloists in search of a smooth, silky upper register with good sound projection and quick response. Red-brown varnish subtly shaded. Ebony Parisian eye pegs and endbutton, Despiau "B" level bridge, ebony tailpiece, ebony Guarneri model chinrest. Pirastro Evah Pirazzi strings. 4/4 size only.	2,240.00
<b>KR60</b> Violin	A master quality August F. Köhr model violin with precision craftsmanship that maximizes the tonal properties of the fine-grain spruce and boldly-figured maple. Robust tone with lots of color and complexity. Wonderfully brilliant E string, balanced and resonant across all registers, with strength all the way up the G string. A beautiful performance-level violin. Medium-gloss, orange-brown varnish. Ebony Parisian eye pegs and endbutton, Despiau "A" level bridge, ebony tailpiece, ebony Guarneri model chinrest. Pirastro Evah Pirazzi Strings. 4/4 size only.	5,010.00





**J. THIBOUVILLE-LAMY VIOLIN**

*"The J. Thibouville-Lamy Barnabetti 4/4 violin is a beautiful master-built instrument honouring its stunning predecessor originally built in 1910 in J.T.L's workshops in Mirecourt - the birthplace of French violin making."*



Item #	Description	\$-List
JVL1A	J.Thibouville-Lamy violin, Barnabetti model. 4/4 size. The J.T.L Barnabetti Violin uses the finest selection of European tonewoods and features a one-piece Maple back and ribs with a broad-grain Spruce top. Its naturally rich orange-brown colour is accentuated with an oil varnish, masterfully applied by skilled luthiers using centuries-old techniques to ensure the Barnabetti violin looks as wonderful as it sounds.	2,405.00



**HEINRICH GILL VIOLINS**

Since 1952, the Heinrich Gill Workshop has been handcrafting violins in Bubenreuth, Germany. The violinmaker Bernd Dimbath purchased the company in 1990 and embarked on a decades long journey to combine the centuries old traditions with modern and innovative technology.

Dimbath has developed a novel approach to the making process using numerous scientifically-based measurement methods. Heinrich Gill is the only manufacturer worldwide who can guarantee the acoustical performance of each single instrument that leaves the workshop.

Winner Of The  
**DEUTSCHER  
MUSIKINSTRUMENTENPREIS  
2024**



Item #	Description	\$-List
GILL-FALCON-1-ADJ	Heinrich Gill Falcon model violin, 4/4.	4,550.00





## FRANZ SANDNER VIOLINS

From its beginnings in 1924 and spanning more than three generations to the present day, the Franz Sandner workshop of Germany has produced exceptional instruments with special care, precision, and expert knowledge which express a true love of music. Based in Nauheim, Sandner instruments only use dried spruce wood for the top plates and well matured European maple for the backs, sides and the necks. A traditional spirit varnish is applied for a beautiful appearance and open sound.

Howard Core Company has built a strong working relationship over many years with Franz Sandner and is pleased to offer this line of violins and cellos all crafted in Germany.



Franz Sandner

All prices include  
our U.S. adjustment

Made in Germany



FS604



FS702

Item #	Description	\$-List
<b>FS604</b> <b>Violin</b>	Strad model, light flame, subtly shaded glossy medium-brown to golden-brown finish. Even tonal response with a clear, moderate sound projection. A good step-up violin for an intermediate to advancing player. Ebony Parisian eye pegs & endbutton, Despiau "B" level bridge, ebony tailpiece, ebony Guarneri model chinrest. Thomastik Dominant A, D, G strings with Pirastro Gold Label E (loop end E). 4/4 size only.	3,025.00
<b>FS604V</b> <b>Viola</b>	Like FS604 above, with Aubert Mirecourt bridge and Thomastik Dominant strings. 15", 15.5" & 16" available.	3,125.00
<b>FS702</b> <b>Violin</b>	Strad model, moderate flame with medium gloss, softly shaded orange-red varnish. Strong projection, clear response and full dynamics combine for delightful tonal qualities. Ebony Parisian eye pegs & endbutton, Despiau "B" level bridge, ebony tailpiece and Guarneri model chinrest. Evah Pirazzi strings. 4/4 size.	4,065.00

## FRANZ SANDNER VIOLINS

*All prices include  
our U.S. adjustment*



FS702A



FS703A

Item #	Description	\$-List
<b>FS702A</b> <b>Violin</b>	Strad model, moderate flame. Tastefully antiqued deep brown varnish over golden ground for a classic "old German" look. Big sound - robust, yet clear lows and brilliant, easy to control highs - ideal for the advancing player. Ebony Parisian eye pegs & endbutton, Despiau "B" level bridge, ebony tailpiece and Guarneri model chinrest. Pirastro Evah Pirazzi strings. 4/4 size only.	4,255.00
<b>FS703A</b> <b>Violin</b>	Strad model, better flame with attractive orange-red varnish antiqued to match its mature tonal qualities and highlight its traditional German workmanship. The clean articulation, sparkling dynamic range and full-bodied voice will inspire advancing players. Ebony Parisian eye pegs & endbutton, Despiau "B" level bridge, ebony tailpiece and Guarneri model chinrest. Evah Pirazzi strings. 4/4 size.	4,905.00





## FRANZ SANDNER VIOLINS

Made in Germany



VIOLIN / VIOLA

*All prices include  
our U.S. adjustment*



FS801



FS803

Item #	Description	\$-List
<b>FS801</b> <b>Violin</b>	Strad model, well flamed maple, select spruce top, medium gloss, golden orange-brown finish lightly shaded. Full, powerful tone with excellent dynamic range. Ebony Parisian eye pegs & endbutton, Despiau "B" level bridge, ebony tailpiece and Guarneri ebony chinrest, Rondo strings. 4/4 size only.	5,655.00
<b>FS803</b> <b>Violin</b>	Guarneri model, better flame with medium gloss, golden-brown finish. Clear tone with great projection. Plays effortlessly all the way up the G & E strings. Ebony Parisian eye pegs & endbutton, Despiau "B" level bridge, ebony tailpiece and Guarneri model chinrest. Pirastro Evah Pirazzi Strings. 4/4 size only.	6,035.00

## HÖFNER VIOLINS

For nearly 130 years Höfner of Germany has been producing quality string instruments and bows. Karl Höfner started the company in 1887 in Schönbach, which was the European center of its day for musical instrument production. Over the coming decades, Höfner's business grew to meet global demands, earning a reputation for high-quality craftsmanship and economically-efficient working methods. Now located at Hagenau in Bavaria, Höfner uses the traditional methods of violinmaking and bowmaking, tried and true for generations, to create a wide range of instruments and bows suitable for students as well as professionals.

### HÖFNER-8 VIOLIN

For players seeking even better tone from a German-made instrument, the HOF-8 model uses selected spruce tops, better-flamed maple, and an antiqued, hand-applied varnish with natural resins. The quick response and wider dynamic range are enjoyed by intermediate and advancing students. Includes ebony pegs and endbutton, Despiau "C" level French bridge, ebony tailpiece with E tuner, Guarneri model ebony chinrest, and Thomastik Dominant A, D, & G strings with Pirastro Gold Label E (loop end). 4/4 size only.

Item # HOF-8-VN      List \$ 2,020.00



HOF-8

### HÖFNER-10E VIOLIN

Made in Germany with a twist. Höfner's 130-year old tradition meets 21st century eco-friendly technology. The fingerboard, nut, and saddle are made with a special composite material made from recycled wood products, and replaces the need for large pieces of ebony – an increasingly precious resource. The European spruce and maple are harvested from sustainable forests, and then naturally air-dried for many years and decades. The traditional natural resin varnish is safe for the environment, and helps the instruments look and sound their best. This all adds up to a German-made violin with excellent acoustic response and a full tonal spectrum. Includes ebony Parisian eye pegs and endbutton, Despiau B level French bridge, ebony tailpiece with E tuner, Guarneri model ebony chinrest, Evah Pirazzi strings. 4/4 only.

Item # HOF-10E-VN      List \$ 2,490.00



HOF-10E

*Höfner*  
seit 1887

Made In Germany





**HÖFNER-11E**

With more time allotted for shaping the arches and carving the graduations of the plates, the Höfner makers are capable of achieving better acoustic response and a fuller tonal spectrum. The attractive spruce and maple are clearly seen through the more transparent ground coat and antiqued orange-brown spirit varnish. Includes ebony Parisian eye pegs and endbutton, Despiau "B" level French bridge, ebony tailpiece with E tuner, Guarneri model ebony chinrest, and Pirastro Evah Pirazzi strings. 4/4 only.

Item # HOF-11E-VN

List \$ 2,925.00

*Höfner*  
seit 1887  
Made in Germany

*All prices include  
our U.S. adjustment*

**HOF-11E****HÖFNER-115**

Handcrafted from select European tonewoods, the Höfner 115 model embodies the centuries-old German tradition of violinmaking. Using classic techniques, the Höfner violinmakers produce instruments with easy response, full-bodied tone, and sonorous projection. Finished with a beautiful antique varnish which nods to the rich history of Höfner's beginnings in Schönbach. Includes ebony Parisian eye pegs and endbutton, Despiau "B" level French bridge, ebony tailpiece with E tuner, and Guarneri model ebony chinrest. 4/4 only.

**Item # HOF-115-AS**

Stradivari model. Equipped with Pirastro Evah Pirazzi strings.

List \$ 4,385.00

**Item # HOF-115-GG**

Guarneri model. Equipped with Pirastro Evah Pirazzi strings.

List \$ 4,475.00.

**HOF-115-GG****HOF-115-AS**

## HÖFNER VINTAGE SERIES

The Höfner Vintage Series instruments showcase the unrestrained talent of their very best makers. With years of experience and training, these geigenmakers are given the freedom to use their skill and intuition to create modern works of art inspired by the greatest Italian violins in history. The art of violinmaking was at its pinnacle in early 18th century northern Italy, spearheaded by these maestros: Antonio Stradivari, G.B. Guadagnini, Carlo Bergonzi, Francesco Ruggieri, B.G. Guarneri del Gesù, and Tommaso Balestrieri; and so these patterns are the starting point for these contemporary interpretations.

First, these artisans choose each piece of maple and spruce from Höfner's oldest stock of tonewood, air-dried for decades. This natural aging process helps impart a maturity of tone from the start. Next, extensive study and detailed measurements of the original are used to create the outlines, archings, and thicknesses of the plates. Using finger planes, scrapers, and a keen sense of touch, there is a slow, deliberate interaction with each piece of wood which allows the maker to optimize the acoustical response. Each scroll is hand-carved with chisels and gouges to evoke the unique personality of the originals. Finally, the ground coats and varnish layers are gradually applied with specific color palettes for each model, and the resulting finish has the supple texture of a treasured heirloom.

Includes ebony Parisian eye pegs and endbutton, Despiau "A" level French bridge, ebony tailpiece with E tuner, Guarneri model ebony chinrest, and Pirastro Evah Pirazzi Gold strings (silver G, loop end E). 4/4 only.



HOF-225-AS

### Item # HOF-225-AS

Stradivari model. Built on a 1719 example by Antonio Stradivari (c.1644-1737). The beauty of design, unparalleled workmanship, and prolific output of Stradivari deservedly place him as the greatest of all time.

List \$ 14,710.00

### Item # HOF-225-BG

Guadagnini model. Built on a 1757 example by Giovanni Battista Guadagnini (1711-1786). Influenced by Cremonese makers but leaving his own mark stylistically, Guadagnini lived an interesting and somewhat nomadic life, making remarkable instruments in Piacenza, Milan, Parma, and Turin over a 50 year period.

List \$ 14,655.00

### ITEM # HOF-225-CB

Bergonzi model. Built on a 1734 example by Carlo Bergonzi (1683-1747). With noted connections to the Ruggieri, Stradivari, and Guarneri families, Bergonzi established his own identity in Cremona with subtle but distinct differences from the work of his peers.

List \$ 14,710.00



HOF-225-BG



HOF-225-CB







HOF-225-FR



HOF-225-GG

*Höfner*  
seit 1887

Made in Germany

*All prices include  
our U.S. adjustment*

**Item # HOF-225-FR**

Ruggieri model. Built on a 1679 example by Francesco Ruggieri (1630-1698). Greatly influenced by Nicolò Amati, Ruggieri's brilliance was eclipsed by the Amati and Guarneri families during his own time, but recognized by later generations of concert soloists and connoisseurs.

List \$ 14,710.00

**Item # HOF-225-GG**

Guarneri model. Built on a 1741 example by Bartolomeo Giuseppe Guarneri, known as del Gesù (1698-1744). The originality, spontaneity, and supreme tonal qualities of Guarneri del Gesù violins are without equal.

List \$ 14,710.00

**ITEM # HOF-225-TB**

Balestrieri model. Built on a 1755 example by Tommaso Balestrieri (c.1735-1790). Influenced somewhat by the Cremonese school by way of Pietro Guarneri and Camilli, he is regarded as one of the great makers in Mantua.

List \$ 14,710.00



HOF-225-TB

BIEG VIOLINS

All prices include  
our U.S. adjustment

Made in Germany



BIEG-VN-W-GUAR



BIEG-VN-WSP-GUAR

Item #	Description	\$-List
<b>BIEG-VN-W-GUAR</b> Violin	Our distinctive instruments captivate with their exquisite beauty, elegance, and exceptional craftsmanship. Introducing the Workshop M.F. Bieg violin, available in 4/4 size and crafted in the esteemed Guarneri model. Boasting a flamed maple back and a spruce top, this violin is adorned with ebony fittings and a Wittner tail-piece. The Strad model is equipped with Thomastik Vision SOLO strings, and the Guarneri model is equipped with Pirastro Evah Pirazzi Strings. This violin is finished with a lovely golden-brown varnish, formulated with spirit ingredients for a refined touch. Proudly made in Germany, this product embodies precision and quality.	5,735.00
<b>BIEG-VN-W-STRAD</b> Violin	Like above, Stradivari model.	5,120.00
<b>BIEG-VN-WSP-GUAR</b> Violin	Crafted with precision for intermediate to advanced performers, the Workshop Special M.F. Bieg violin embodies the essence of German workshop artistry. Its golden ground, complemented by a subtle color shade and gentle antiquing, showcases the exquisite attention to detail. The medium luster polish accentuates the dimensionality of the wood, enhancing its natural beauty. Fitted with Pirastro Evah Pirazzi strings, this Guarneri model violin produces a rich and balanced tone, elevating every performance. Proudly made in Germany, this violin reflects unparalleled craftsmanship and meticulous attention to detail.	7,650.00





## BIEG VIOLINS

*All prices include  
our U.S. adjustment*

Made in Germany



**BIEG-VN-ORCH-GUAR**



**BIEG-VN-MSP**

Item #	Description	\$-List
<b>BIEG-VN-ORCH-GUAR</b> Violin	Crafted in the esteemed Guarneri model, the Orchestra M.F. Bieg violin boasts exceptional quality and elegance. Its flamed maple back and carefully selected spruce top ensure a visually stunning and acoustically superior instrument. Equipped with Thomastik Rondo strings, it delivers a wonderfully warm and balanced tone, making it a joy to play. Finished with a golden-brown spirit varnish and an antique finish. This product is proudly crafted in Germany, reflecting unparalleled craftsmanship and attention to detail.	13,250.00
<b>BIEG-VN-ORCH-STRAD</b> Violin	Like above, Stradivari model.	11,830.00
<b>BIEG-VN-MSP</b> Violin	Bieg presents finely crafted violins inspired by renowned makers such as Stradivari, Guarneri, Bergonzi, and Guadagnini. Each instrument showcases a luxurious flamed maple back and a carefully selected spruce top from Bieg's finest warehouse stock. With components tailored individually for each violin, the Master Special honors ancient techniques, resulting in instruments that not only offer ease of play but also elevate the player with a wonderfully warm and rich tone. Equipped with Thomastik Rondo Gold strings, finished in a golden-brown varnish, and meticulously antiqued, our violins proudly represent German craftsmanship.	24,200.00

The Heffler workshop is nestled in the northern Bavarian town of Forchheim, Germany, and for many years has established a worldwide reputation for wonderful sounding instruments. When we recently discussed the possibility to be their U.S. Distributor we were delighted at the opportunity. Heffler is offering exclusive models through Howard Core that bring to North American an exceptional combination of performance-quality tone and expert craftsmanship. Our own violinists and cellists here at Howard Core have found a consistent theme throughout all the models: warm, rich, and mature tonal qualities.

From the 60-2 to the 80-4 models and in between there is a steady progression in the aging and grading of the tonewood and in the time and attention to detail in the graduation and arching processes. These have direct impact on the resulting tonal complexity and dynamic range of each model. The skill of all the Heffler geigenbauers is evident in every model...even the 60-2 model shows clean and careful workmanship, as is consistent throughout the better models.



HEFF-60-2-VN



Made in Germany



HEFF-60-4-VN

HEFF-60-4 also available in  
Guarneri model!



HEFF-70-2-VN

Item #	Description	\$-List
HEFF-60-2-VN	European tonewoods, ebony fingerboard, nut and saddle. Ebony pegs and endbutton, Despiau "C" French bridge, Wittner tailpiece, Guarneri model ebony chinrest, and Thomastik Dominant A, D, & G strings with Pirastro Gold Label E (ball end).	3,330.00
HEFF-60-2-VA	Like above, viola.	3,585.00
HEFF-60-4-VN	Strad model. European tonewoods, ebony fingerboard, nut and saddle. Ebony Parisian eye pegs and endbutton, Despiau "C" French bridge, ebony tailpiece with Wittner E tuner, Guarneri model ebony chinrest, and Thomastik Dominant A, D, & G strings with Pirastro Gold Label E (loop end).	3,960.00
HEFF-70-2-VN	European tonewoods, ebony fingerboard, nut and saddle. Ebony Parisian eye pegs and endbutton, Despiau "B" French bridge, ebony tailpiece with Wittner E tuner, Guarneri model ebony chinrest, and Pirastro Evah Pirazzi strings with loop end E.	5,055.00





**HEFF-70-4-VN**

**HEFF-70-4 also available in  
Guarneri model!**

**HEFF-80-2-VN****HEFF-80-4-VN**

**Made in Germany**

Item #	Description	\$-List
<b>HEFF-70-4-VN</b>	Strad model. European tonewoods, ebony fingerboard, nut and saddle. Ebony Parisian eye pegs and endbutton, Despiau "B" French bridge, ebony tailpiece with Wittner E tuner, Guarneri model ebony chinrest, and Pirastro Evah Pirazzi strings with loop end E.	7,475.00
<b>HEFF-80-2-VN</b>	European tonewoods, ebony fingerboard, nut and saddle. Ebony Parisian eye pegs and endbutton, Despiau "B" French bridge, ebony tailpiece with Wittner E tuner, Guarneri model ebony chinrest, and Thomastik Peter Infeld strings with loop end E.	11,985.00
<b>HEFF-80-4-VN</b>	European tonewoods highest grade, ebony fingerboard, nut and saddle. Ebony Parisian eye pegs and endbutton, Aubert "DeLuxe" French bridge, ebony tailpiece with Wittner E tuner, Guarneri model ebony chinrest, and Thomastik Peter Infeld strings with loop end E.	14,925.00

AUBERT LUTHERIE

The legendary name “Aubert” is recognized by every luthier and repairperson, and represents a tradition of excellence for quality French bridges. Since 1864, Aubert has earned this reputation based on their expertise in wood selection, careful aging process, and precise workmanship. This has been the same foundation for the Aubert Lutherie, a small group of French violin-makers in Mirecourt that joined Aubert in the 1980s, who use only the finest European tonewoods to craft instruments worthy of professional musicians throughout the world.

All prices include  
our U.S. adjustment



Made in  
France

AL6000  
VUILLAUME

Item #	Description	\$-List
<b>AL6000</b> <b>Vuillaume</b> <b>Violin</b>	<p>Aubert Lutherie instruments encompass all of the beauty and power we would expect of fine handmade French violins. J.B. Vuillaume (1798-1875) established his fame in Paris, but he was from Mirecourt, trained there as a luthier, and maintained a professional network of Mirecourt craftsmen that became the lifeblood of <i>lutherie française</i> as it grew and flourished for generations to come.</p> <p>Inspired by this history, Aubert Lutherie’s “Vuillaume” model has a medium red-golden traditional French spirit varnish polished to a high luster, bringing to light the highly-select tonewoods. The rich tonal quality comes from a medium voice capable of a broad range of colors. The response is even and balanced throughout its registers, and yet can become even more complex in the wider dynamic ranges. The powerful projection, stability, and ease of play speak to their fine construction in the classic French tradition.</p> <p>Each instrument has been adjusted by the maker using fine ebony fittings, a beautifully cut and fitted Aubert Deluxe bridge and a set of Corelli Alliance Vivace strings. Additionally, each instrument comes with a Maker’s Certificate.</p>	11,765.00
<b>AL6020V</b> <b>Vuillaume</b> <b>Viola</b>	<p>Like above, viola. 16".</p>	12,190.00





Made in  
France



## Item #

**AL6500****Nicolas  
Violin**

## Description

The "Jean-Francois Nicolas" is a newer model and uses an oil-based clear brown varnish, unique for the Aubert Lutherie, to impart a more mature, antique character. With highly-select maple and spruce, each violin is handmade in the classic French tradition to produce a broad, rich tone with power and clarity. The response is even and balanced throughout the registers, with a variety of tonal layers present in the wider dynamic ranges.

Each instrument has been adjusted by the maker using fine ebony fittings, a beautifully cut and fitted Aubert Deluxe bridge, and a set of Corelli Alliance Vivace strings. Additionally, each instrument comes with a Maker's Certificate.

## \$-List

12,190.00



## AUBERT LUTHERIE

*All prices include  
our U.S. adjustment*

*Made in  
France*



Item #	Description	\$-List
<b>AL7000</b> <b>Delange</b> <b>Violin</b>	<p>The Aubert Lutherie selects their best aged tonewood for the "Christophe Delange" model. Extra care and effort go into the delicate handcrafting of the arching and plate graduation to produce an especially elegant model. The rich, spirit varnish is a golden brown color, yet transparent to allow the exceptional maple and spruce to come alive through its refractive ground coat. The sophisticated tonal qualities and full-bodied projection are ideal for the professional repertoire.</p> <p>Each instrument has been adjusted by the maker using fine ebony fittings, a beautifully cut and fitted Aubert Deluxe bridge, and a set of Corelli Alliance Vivace strings. Additionally, each instrument comes with a Maker's Certificate.</p>	12,475.00





**WHITE (UNVARNISHED) INSTRUMENTS**

<i>no.</i>	<i>description</i>	<i>\$-NET</i>
W100	Basic, well-constructed student quality violin, plain back and sides. 4/4, 3/4, and 1/2 sizes available.	96.00
W400	Good quality violin suitable for the advancing student. Well-seasoned wood with flamed back. 4/4 size only.	233.00
W400V	Viola, like W400 violin above. 14", 15", 15½", 16", 16½" sizes available.	299.00
W401V	Like the W400V, with one-piece back. 15½", 16", & 16½" sizes available.	335.00
W500	Better quality, well-flamed violin. 4/4 size only.	371.00
W600G	Master maker quality violin, Guarneri model. Very well flamed. 4/4 size only.	556.00
W600S	As above, Stradivari model.	556.00

**W100**

**"A" Quality Wood**  
**Same Great Craftsmanship As Our**  
**Finished Instruments!**

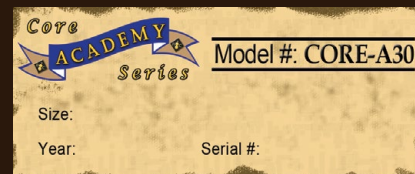
**W400V****W401V****W600**

# Core ACADEMY Series

Start your customers off on the right track! Help beginning players get excited about string instruments, and give budget-conscious customers a worthwhile option. The Core Academy line represents solid craftsmanship and materials, proper setup, and good tone production, all at a value price.

The A30 model has been designed for maximum value. There is always a challenge to compete with the most inexpensive instruments in the global marketplace, but what is sacrificed? What is the line between proper construction and a poor imitation? With the A30 model we have established a basic standard, subjecting it to extensive testing and incredible scrutiny. This standard has been embraced nationwide as a solid, dependable choice.

These cellos are extremely well-constructed with all the right dimensions, then adjusted in our U.S. workshops. This translates into an easy to play instrument with quality sound that you can count on. Truly a great value for beginning students, the solid craftsmanship and durability will last year in and year out in your rental fleet.



*All prices include  
our U.S. adjustment*



## CORE-A30 Back Measurements:

4/4	-	757 mm
3/4	-	694 mm
1/2	-	650 mm
1/4	-	586 mm
1/8	-	512 mm
(+/- 5 mm)		

*Core Academy Cello Basic Outfit includes  
our CC480 padded cover, 1076VC bow,  
microfiber polishing cloth, and rosin.*

Item #	Description	\$-List	MAP	
CORE-A30	Student quality cello. Fully laminated, with ebony fingerboard, nut & saddle, and inlaid purfling. Ebony pegs, endpin, quality maple bridge, composite tailpiece with integrated tuners, and D'Addario Prelude strings. 4/4, 3/4, 1/2, 1/4 & 1/8 sizes available.	1,850.00	1,388.65	cello only
Cello FULLY LAMINATED		2,075.00	1,556.80	outfit





# Core ACADEMY Series

Quality workmanship and properly dimensioned, adjusted in our U.S. workshops. Featuring a pleasing shaded yellow-amber finish.

CELLO



*Core Academy Cello Basic Outfit includes our CC480 padded cover, 1076VC bow, microfiber polishing cloth, and rosin.*

Item #	Description	\$-List	MAP	
<b>CORE-A31</b>	Fully laminated cello, with ebony fingerboard, ebony nut & saddle, ebony pegs and end-pin. Inlaid purfling, quality maple bridge, and composite tailpiece with integrated tuners. D'Addario Prelude strings. Maple neck. 4/4, 3/4, 1/2, 1/4 & 1/8 sizes.	1,995.00	1,496.45	cello only
<b>Cello</b>		2,225.00	1,668.95	outfit
<b>FULLY LAMINATED</b>				

# Core ACADEMY Series

Get the best of both worlds with the durability of laminated maple back and sides, and the improved acoustic response of solid carved spruce top. The A33 "hybrid" model features both! The laminated back and sides are especially sturdy in school settings and drier climates, while the carved spruce top gives players a wider range of tone and expression.



*Core Academy Cello Basic Outfit includes our CC480 padded cover, 1076VC bow, microfiber polishing cloth, and rosin.*

Item #	Description	\$-List	MAP	
<b>CORE-A33</b>	Student quality cello. Hybrid, laminated back and sides, carved spruce top, solid maple neck and scroll. Ebony fingerboard, nut & saddle, and inlaid purfling. Ebony pegs, endpin, quality maple bridge, composite tailpiece with integrated tuners, and D'Addario Prelude strings. 4/4, 3/4, 1/2, & 1/4 sizes available.	2,140.00	1,604.25	cello only
<b>Cello</b>		2,370.00	1,776.75	outfit
<b>HYBRID</b>				





# Core ACADEMY Series

*All prices include  
our U.S. adjustment*

## CORE-A34

Expand your musical horizons with a fully carved cello. Requiring more care in handling than a laminate, the enhanced tone quality of the A34 model can be well worth it for dedicated students. Solid, carved tonewoods allow for more freedom of vibration and resonance. Plain maple is used for economy, but the stable build-quality gives players perennial consistency when cared for with proper humidification and maintenance.

## CORE-A35 (pictured)

The star pupil of the Core Academy Series: the all new A35 model has been earning top marks since its re-introduction and it's no surprise. This head of the class features improved arching and graduation, attractive flamed maple, and an aesthetically pleasing matte-finish. Hard work and careful study habits pay off with a pleasant tone, easy playability and quick response that will pass any test with flying colors.



CORE-A35

*Core Academy Cello Basic Outfit includes  
our CC480 padded cover, 1076VC bow,  
microfiber polishing cloth, and rosin.*

Item #	Description	\$-List	MAP	
CORE-A34 Cello	Better student quality cello. Fully carved spruce top and plain maple back. Laminated maple sides. Inlaid purfling, ebony pegs, endpin, quality maple bridge, composite tailpiece with integrated tuners, and D'Addario Prelude strings. 4/4, 3/4, 1/2, & 1/4 sizes available.	2,290.00	1,716.35	cello only
		2,515.00	1,884.55	outfit
CORE-A35 Cello	Better student quality cello. Fully carved spruce top and lightly flamed maple back. Laminated maple sides. Inlaid purfling, ebony pegs, endpin, French bridge, composite tailpiece with integrated tuners, and D'Addario Prelude strings. 4/4, 3/4, & 1/2 sizes available.	2,575.00	1,932.00	cello only
		2,805.00	2,104.50	outfit

**JOHANNES KÖHR™ SERIES**  
**FULLY CARVED**  
**STUDENT CELLOS**

CELLO



Item #	Description	\$-List	MAP
<b>K512C</b> <b>Cello</b>	Better student quality cello. Fully carved, with spruce top and maple back & sides. Inlaid purfling, ebony pegs, endpin, French bridge, composite tailpiece with integrated tuners, and Helicore strings. 4/4, 3/4, 1/2 sizes available.	2,985.00	2,238.20





**JOHANNES KÖHR™ SERIES**  
**FULLY CARVED**  
**STUDENT CELLOS**

Johannes Köhr™

Model No.

Serial No.

Jahr

CELO



*All prices include  
our U.S. adjustment*

Item #	Description	\$-List	MAP
<b>K515C</b> <b>Cello</b>	A visually stunning cello that shines bright under the showroom lights. The bold antiqued finish is a deep red-brown over a golden ground that gives it a fiery look. The tone is also bold, with an extremely clear voice; big sound potential throughout, yet with a uniquely rich quality that carries evenly across all registers. The Johannes Köhr K515C is an excellent instrument for intermediate players seeking more range and personality. Made in limited quantities. Fully carved. Ebony fingerboard and Parisian eye pegs, Despiau "D" level French bridge, composite tailpiece with integrated tuners, and endpin. Kaplan strings. 4/4, 3/4, & 1/2 sizes available. (D'Addario Helicore strings on fractional sizes).	3,755.00	2,816.05

CELLO

# Core Conservatory Cellos

The Core Conservatory instruments help musicians take their playing to the next level. Practicing, lessons, and rehearsals require a student’s commitment, and these instruments reward the extra efforts with greater range of tone and dynamics. The luthiers spend more time in carving and shaping the plates for improved acoustic response which helps the player’s musical education flourish.



CORE-C30

Item #	Description	\$-List	MAP
<b>CORE-C30</b> Cello	Advancing-level cello, the C30 model features well-seasoned European spruce top which imparts a focused yet sweet quality, and well-flamed maple back & sides. Ebony pegs, endpin, Despiau "C" level French bridge, composite tailpiece with integrated tuners, and D'Addario Kaplan strings. 4/4, 3/4 & 1/2 sizes available. (D'Addario Helicore strings on fractional sizes).	3,755.00	2,816.05





# Core Conservatory Cellos

Core Conservatory

Model

Year

Serial No.

Size

CELLO



CORE-C32

Item #	Description	\$-List	MAP
<b>CORE-C32</b> Cello	The C32 advancing-level cello has well-aged spruce top, maple back and sides, finished with a transparent golden ground and rich orange-red varnish. Ebony pegs, endpin, Despiou "C" level French bridge, composite tailpiece with integrated tuners, and D'Addario Kaplan strings. Professionally adjusted and ready to play. 4/4 only.	3,790.00	2,841.95



CELLO

# Core Conservatory Cellos

All prices include  
our U.S. adjustment

The Core Conservatory instruments help musicians take their playing to the next level. Practicing, lessons, and rehearsals require a student’s commitment, and these instruments reward the extra efforts with greater range of tone and dynamics. The luthiers spend more time in carving and shaping the plates for improved acoustic response which helps the player’s musical education flourish.



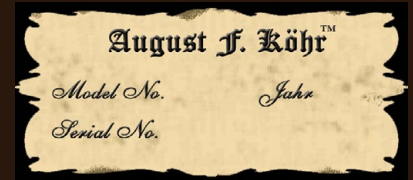
Item #	Description	\$-List	MAP
<b>CORE-C34</b> Cello	The C34 advancing-level cello with especially well-aged spruce top and handsomely flamed maple back and sides. Beautifully shaded orange-red varnish tastefully antiqued over a golden ground coat. Ebony pegs, endpin, Despiau “C” level French bridge, Wittner tailpiece with integrated tuners, and D’Addario Kaplan strings. 4/4	3,830.00	2,872.15





**AUGUST F. KÖHR™ SERIES**  
**FULLY CARVED**  
**CELLOS**

*All prices include  
 our U.S. adjustment*



CELO

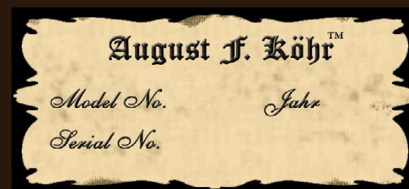
The texture of the rich, buttery varnish summons the player to draw the instrument closer for thorough inspection. As delightful as the craftsmanship and overall appearance prove to be, with skillful bowing and agile left hand, the K565C cello truly comes to life. From the same workshop as the K515C, the K565C model kicks everything into a higher gear, from its select, aged tonewoods to the extra detail in the arching and graduation. The bold coloration and shading of the varnish is given extra dimension with its sophisticated texture.



Item #	Description	\$-List	MAP
<b>K565C</b> Cello	Ebony Parisian eye pegs and Endbutton, Despiau "C" level French bridge, composite tailpiece with integrated tuners, and D'Addario Kaplan strings. 4/4 only.	3,900.00	2,923.90

## AUGUST F. KÖHR™ SERIES FULLY CARVED CELLOS

August F. Köhr instruments represent a step-up from the step-ups. The HC600C model is a fine advancing level cello, crafted using well-flamed, seasoned maple and choice spruce, with additional drying time at each stage of construction. Hand-graduated to produce more resonant acoustic properties, this cello is well suited for players who desire an open sound with good projection, medium tonal range, clear voice and even, quick response throughout. Finishes range from rich red-brown to warm golden-brown.



*All prices include  
our U.S. adjustment*



### HC600C Back Measurements:

4/4	-	760 mm
7/8	-	725 mm
3/4	-	690 mm
1/2	-	650 mm
1/4	-	605 mm
1/4	-	580 mm
1/8	-	530 mm
1/10	-	460 mm
(±/- 5 mm)		

Item #	Description	\$-List	MAP
<b>HC600C</b> Cello	Adjusted with D'Addario Kaplan strings, ebony Parisian eye pegs, carbon fiber endpin, Despiau "C" level bridge, and composite tailpiece. 4/4, 7/8, 3/4, 1/2, 1/4, 1/8, & 1/10 sizes available. (D'Addario Helicore strings on fractional sizes).	4,020.00	3,013.70





## CORE SELECT



CELLO



Item #	Description	\$-List	MAP
<b>CS3300C</b> Cello	Advancing-level cello from the artisanal Core Select workshop. Well-figured maple and fine-grain spruce are first aged naturally to optimal stability, then carefully carved for ideal acoustic response. Light golden-brown varnish, slightly color shaded and mildly antiqued. Includes Parisian eye ebony pegs, lightweight carbon endpin, Despiau "C" level Belgian-style bridge, and German Wittner tailpiece. Professionally setup with D'Addario Kaplan strings. 4/4 only.	5,515.00	4,134.40

CELLO

# Core Symphony Cello

Core Symphony

Model

Year

Serial No.

Take the stage confidently with the Core Symphony models. Built for performance, they have style, power, and the versatility required for orchestral, solo, and chamber music, even contemporary genres. From the overture to the final encore, the Core Symphony series gives an amazing performance.



CORE-SM30



CORE-SM31

Item #	Description	\$-List	MAP
<b>CORE-SM30</b> Cello	Concert-level cello with flamed maple back aged at least 7 years, and well-seasoned spruce top. The tonal profile is well-balanced, with both clarity and warmth, refinement and power. Includes ebony Parisian eye pegs, endpin, Despiau "B" level French bridge, and German Wittner tailpiece with integrated tuners. Pirastro Perpetual Edition strings. 4/4 only.	6,540.00	4,903.30
<b>CORE-SM31</b> Cello	The SM31 concert-level cello incorporates well-seasoned flamed maple back and narrow grain spruce top for a powerful response and full-bodied tonal palette. The attractive orange-red varnish compliments the careful workmanship of these dedicated luthiers. Includes ebony Parisian eye pegs, endpin, Despiau "B" level French bridge, and German Wittner tailpiece with integrated tuners. Perpetual Edition A & D, Spirocore Tungsten G & C strings. 4/4 only.	6,580.00	4,933.50





# Core Symphony Cello

Core Symphony



Model

Year

Serial No.

CELLO



CORE-SM34

Item #	Description	\$-List	MAP
<b>CORE-SM34</b> Cello	The SM34 concert-level cello is crafted with exceptional tonewood, patiently aged before the plates are hand-carved to their ideal thicknesses and archings. The layers of transparent orange-red varnish are lightly shaded over a luminous golden ground coat for a sophisticated visual effect. Power, refinement, warmth and clarity only begin to describe the versatility of tone for the serious cellist. Includes ebony Parisian eye pegs, endpin, Despiau "B" level French bridge, and German Wittner tailpiece with integrated tuners. Perpetual Edition A & D, Spirocore Tungsten G & C strings. 4/4 only.	7,000.00	5,248.30



All CS4000 models are 4/4 only. Fitted with ebony Parisian eye pegs, carbon fiber endpin, Despiau "B" level bridge, Wittner tailpiece. Available in these models: Gofriller, Maggini, Montagnana, Rocca, and Stainer.



CS4000C  
GOFRILLER



CS4000C  
MAGGINI

All prices include  
our U.S. adjustment

Item #	Description	\$-List	MAP
CS4000C Gofriller	Matteo Gofriller (1659-1742) stands alone as the first great Venetian maker, influencing Gobetti, Montagnana, and Serafin. Gofriller's cellos have been prized by soloists like Janos Starker, Matt Haimovitz, and Anner Bylsma for their deep, rich tonal qualities. The Core Select "Gofriller" model features the wide bouts of some original examples, and delivers an amazing C-string that blossoms evenly throughout the middle registers to a soloistic A-string. The red-brown amber varnish, tastefully antiqued, highlights the well-figured maple and even grain spruce. Excellent response with wide dynamic range. Equipped with Pirastro Evah Pirazzi strings. Body length - 755 mm; Upper Bout - 358 mm; Lower Bout - 435 mm.	6,680.00	5,011.15
CS4000C Maggini	A truly unique cello pattern with a longer outline, broader shoulders, elongated f-holes and double-purfling, this Core Select model is based on the work of the great Giovanni Paolo Maggini (c.1580-1630) of Brescia, Italy. Maggini and his teacher Gasparo da Salo were making slightly different pattern violin-family instruments about a century earlier than Stradivari and Guarneri in neighboring Cremona. The Maggini model works especially well for violas and cellos to give an extremely rich lower register, and great depth of tone throughout the full range. Using aged tonewoods, these are made in the centuries-old European tradition using classical techniques. Equipped with Pirastro Evah Pirazzi Gold strings. Body length - 758 mm; Upper Bout - 360 mm; Lower Bout - 455 mm.	6,825.00	5,118.95







**CS4000C  
MONTAGNANA**



**CS4000C  
ROCCA**



**CS4000C  
STAINER**

Item #	Description	\$-List	MAP
<b>CS4000C Montagnana</b>	Domenico Montagnana (1686-1750) was one of the great makers of Venice, and is especially renowned for his cellos which are as distinctive in appearance as they are in their unique tonal qualities. The wider pattern, and slightly flatter archings give these cellos a deep, powerful baritone voice with a sizzling tenor range making them ideal for the world's best cellists: Yo-Yo Ma, Heinrich Schiff, Raphael Wallfisch, and Steven Isserlis among others. The Core Select "Montagnana" model is a fantastic sounding modern cello crafted in the pattern and spirit of Montagnana. Well-figured maple, even grain spruce, amber-red varnish, tastefully antiqued. Powerful projection, even balance, wide tonal palette. Equipped with Pirastro Perpetual Edition strings. Body length - 745 mm; Upper Bout - 363 mm; Lower Bout - 439 mm.	6,680.00	5,011.15
<b>CS4000C Rocca</b>	The narrower pattern is not quite 7/8, but with more slender shoulders than traditional models, the Core Select "Rocca" is very comfortable for the petite cellist, perfect for shifting into higher positions. Based on the work of Giuseppe Rocca (1807-1865), this talented maker from Turin, Italy was himself inspired by the Stradivari and Guarneri instruments of the preceding century. As the repertoire changed from the 1700s to the 1800s and musicians demanded more powerful projection, the great Cremonese models became fully appreciated during Rocca's time for their soloistic virtues. Seasoned tonewoods and careful workmanship help give this Core Select "Rocca" a tenor voice that projects clearly. Equipped with Pirastro Perpetual Edition strings. Body length - 740 mm; Upper Bout - 335 mm; Lower Bout - 426 mm.	6,680.00	5,011.15
<b>CS4000C Stainer</b>	The warmth and complexity of tone gives the "Stainer" model a distinct place in the Core Select lineup. The fuller arching, and wide placement of the f-holes impart these sweet, delicate acoustic qualities which reflect an earlier musical aesthetic. During his time, Jacob Stainer (1617-1683) of Absam was in demand as a luthier for royal court musicians throughout Austria, Germany, Italy and Spain. The beautiful, pure sound of the baroque period was embodied by the Stainer design, and for today's cellists this Core Select replica is particularly well-suited for orchestral and chamber music. Equipped with Pirastro Perpetual Edition strings. Body length - 752 mm; Upper Bout - 355 mm; Lower Bout - 444 mm.	6,680.00	5,011.15

## DRAGON CELLOS



by Core

*We are proud to carry the instruments made by Zhonglong Sheng of the famous Sheng family, known throughout China and the world for being highly distinguished musicians and violinmakers who take great pride in their artistic craftsmanship. Zhonglong translates literally to "Dragon" and the Core Dragon instruments offer customers bold and auspicious qualities.*

**DR10-VC** - An accessible introduction to the Dragon line, this affordable yet capable instrument possesses all the qualities needed to make a fine performance level instrument: medium-dark tone, fast response and a clear, even voice throughout. The appearance has been a hit with its moderate flaming, mildly antiqued varnish, with a medium brown to red-brown color of medium luster giving it a naturally-worn patina. Boxwood pegs, carbon fiber endpin, Despiau "C" level French bridge, Wittner tailpiece. Adjusted with D'Addario Kaplan strings. 4/4 size.

item #	\$-List
DR10-VC	5,940.00



**ALL DRAGON CELLOS ARE AGED 5 YEARS  
AFTER THEIR CONSTRUCTION  
AND PRIOR TO VARNISHING**



**DR20-VC** - A very nice combination of sweetness and power; responsive at all dynamic levels - a great value in performance-level cellos. The maple has more pronounced flaming, and prepared with a golden ground, the amber-brown varnish is gently antiqued for an elegant appearance. Boxwood pegs, carbon fiber endpin, Despiau "C" level French bridge, Wittner tailpiece. Adjusted with D'Addario Kaplan strings. 4/4 size.

new item #	\$-List
DR20-VC	6,390.00





## DRAGON CELLOS



by Core

CELLO



**DR30-VC** - For even more dedicated players, the very sweet, dark tone is balanced with power and clarity throughout all registers. Using well-flamed maple and finely grained spruce, the tonewoods are crafted with extra time and effort to produce a wider tonal and dynamic range. The varnish is mildly antiqued warm amber color of medium luster. Ebony pegs, carbon fiber endpin, Despiau "C" level French bridge, Wittner tailpiece. Adjusted with Pirastro Evah Pirazzi strings. 4/4 size.

new item #	\$-List
DR30-VC	8,000.00

*All prices include  
our U.S. adjustment*

# Dragon

by Core



**DR50-VC** - The ultimate Dragon, the bold tone and soloistic projection will make a lasting impression for both the performer and the audience. Beautifully-figured maple, the choicest spruce, and Dragon's finest luthiers combine to create a warm yet brilliantly rich tonal palette with depth and plenty of carrying power. The varnish is tastefully antiqued amber color over a strikingly transparent golden ground. Ebony pegs, carbon fiber endpin, Despiau "B" level French bridge, Wittner tailpiece. Adjusted with Pirastro Perpetual Edition strings. 4/4 size.

new item #	\$-List
DR50-VC	10,045.00

## CORE SELECT



*All prices include  
our U.S. adjustment*



CS4500C



CS4900C

Item #	Description	\$-List	MAP
<b>CS4500C</b> Cello	Concert level cello with spectacular performance qualities, handmade in limited quantities. Well-aged lightweight, slow-growth tonewoods, carefully antiqued and varnished with maker's own oil varnish recipe. Includes ebony Parisian eye pegs, carbon-fiber endpin, Despiau "B" level Belgian-style bridge, and German Wittner tailpiece with integrated fine tuners. Equipped with Pirastro Perpetual Edition strings. 4/4 only.	9,930.00	7,447.70
<b>CS4900C</b> Montagnana Cello	The skillful workmanship and tasteful antiquing of the CS4900C model bring to life carefully seasoned tonewoods for a dynamic sound with fullness and depth. Made by the workshop of VSA Gold Medal winner Ming Jiang Zhu, the training and craftsmanship are world-class, using classical European techniques. The Montagnana pattern gives the C-string extra power, and extra depth throughout all the registers. Serious cellists will love the variety of tonal dimensions. Ebony pegs with Aubert Mirecourt bridge. Pirastro Perpetual Edition strings. 4/4 only.	11,180.00	8,383.50





# CORE SELECT CS10000C



CS10000C  
STRAD

Item #	Description	\$-List	MAP
<b>CS10000C STRAD</b>	The highest level Core Select cello, made of Italian spruce and Balkan maple aged 7-10 years. The sophisticated coloration and texture of the rich, transparent varnish invites the player to pick up and play the instrument, but only after drawing it close to admire its artistic appearance and craftsmanship in full detail. The sound sings and growls with the full and diverse range required by a professional or serious student. The response is immediate, the tone is balanced evenly across all strings. The master makers from this workshop have trained in Europe and America and have carefully studied the great historical Italian instruments, gaining first-hand insights into these traditional methods. This archetypical Stradivari pattern is a tried and true winner for over 300 years. Equipped with Pirastro Perpetual Edition strings and Akusticus tailpiece. Body length – 752 mm; Upper Bout – 344 mm; Lower Bout – 429 mm	13,125.00	9,845.45

**JOHANNES KÖHR™ ROMANIAN CELLOS**

The Johannes Köhr™ Romanian series offers well-made European instruments at an affordable price. With access to locally-grown tonewoods and an efficient workshop setting, the production costs of the KR10C model are kept as economical as possible.

**KR03C****KR08C**

Item #	Description	\$-List
<b>KR03C</b> Cello	Student quality fully laminated cello. Equipped with D'Addario Prelude strings and composite tailpiece with integrated adjusters. Available in 4/4, 3/4 and 1/2 sizes.	2,615.00
<b>KR08C</b> Cello	Better quality hybrid cello with solid top and laminated back and sides. Equipped with D'Addario Helicore strings and composite tailpiece with integrated adjusters. Available in 4/4, 3/4 and 1/2 sizes.	3,480.00





**JOHANNES KÖHR™ ROMANIAN CELLOS**

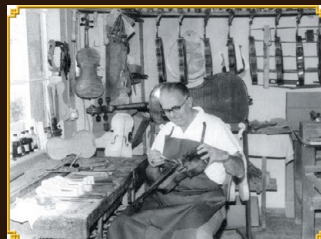
CELLO



Item #	Description	\$-List
<b>KR10C</b> Cello	Student quality cello. Plainly figured maple back, good spruce top. Ebony pegs, French bridge, composite tailpiece with integrated tuners, D'Addario Kaplan strings. 4/4, 3/4, & 1/2 sizes. (D'Addario Helicore strings on fractional sizes).	4,075.00

**FRANZ SANDNER CELLO**

Since 1924, the German workshop of Franz Sandner has produced exceptional instruments which express a true love of music. This FS500A model is ideal for the advancing player seeking a full, robust sound with clarity in the lower registers and brilliance in the upper registers. Patiently-aged European tonewoods are carved with special care, precision, and expert knowledge. Tastefully antiqued deep brown varnish over golden ground for a classic "old German" look.



**MADE IN  
GERMANY**



Item #	Description	\$-List
<b>FS500A</b> Cello	Parisian eye ebony pegs, carbon graphite endpin, Despiau "B" level French bridge, Wittner tail-piece. Adjusted with Pirastro Perpetual strings. 4/4 only.	11,290.00





**THIS PAGE INTENTIONALLY BLANK**

**HÖFNER CELLOS**

For nearly 130 years Höfner of Germany has been producing quality string instruments and bows. Karl Höfner started the company in 1887 in Schönbach, which was the European center of its day for musical instrument production. Over the coming decades, Höfner's business grew to meet global demands, earning a reputation for high-quality craftsmanship and economically-efficient working methods. Now located at Hagenau in Bavaria, Höfner uses the traditional methods of violinmaking and bowmaking, tried and true for generations, to create a wide range of instruments and bows suitable for students as well as professionals.

*Höfner*  
seit 1887

Made in Germany

*All prices include  
our U.S. adjustment*

**HÖFNER 4-2**

Handmade in Germany, the Höfner 4-2 model cello incorporates better-flamed European maple and select Alpine spruce, carefully carved and then hand varnished with natural resins in an antique style. The classic German tone has a broad and deep quality, with excellent projection. Our USA setup include ebony pegs, endpin, Despiau "B" level Belgian-style bridge, Akusticus tailpiece, and Rondo A & D, Spirocore Tungsten G & C strings. 4/4 only.

Item # HOF-4-2-VC

List \$ 12,605.00



HOF-4-2-VC

**HÖFNER 10E**

Höfner model 10 cello, 4/4. Handcrafted from select European tonewoods, this cello embodies the centuries-old German tradition of violinmaking. Using classic techniques, the Höfner violinmakers produce instruments with easy response, full-bodied tone, and sonorous projection. Finished with a beautiful antique reddish-brown varnish which nods to the rich history of Höfner's beginnings in Schönbach. Adjusted with Aubert Luxe Belgian-style bridge, ebony fittings, Akusticus tailpiece, Pirastro Perpetual A & D strings and Spirocore Tungsten G & C strings.

Item # HOF-10E-VC

List \$ 13,300.00



HOF-10E-VC



## HÖFNER-4-5

Handcrafted from select European tonewoods, the Höfner 4-5 series cellos embody the centuries-old German tradition of violinmaking, passed down from masters to apprentices, from one generation to the next. Using time-honored techniques, the Höfner workshop under the guidance of a master maker, produce these cellos with easy response, full-bodied tone, and sonorous projection. Finished with a beautiful antique varnish which nods to the rich history of Höfner's beginnings in Schönbach. Ebony Parisian eye Swiss pegs, endpin, Aubert "DeLuxe" French bridge, Akusticus tailpiece. 4/4 only.

### Item # HOF-4-5-AS-VC

Stradivari model. The classic form by Antonio Stradivari (c.1644-1737) made with the best German materials and workmanship. Adjusted with Pirastro Evah Pirazzi Gold strings.

List \$ 17,175.00

### Item # HOF-4-5-MG-VC

Gofriller model. A unique alternative to the typical wider models by Matteo Gofriller (1659-1742), this replica has narrower upper shoulders with an outline based on the 1700 Gofriller played by Pablo Casals. Adjusted with Pirastro Perpetual strings.

List \$ 16,920.00

### Item # HOF-4-5-BG-VC

Guadagnini model. Based on a slightly shorter, wider pattern by Giovanni Battista Guadagnini (1711-1786). Adjusted with Larsen Magnacore strings.

List \$ 18,065.00



HOF-4-5-AS



HOF-4-5-MG

*Höfner*  
seit 1887

Made in Germany

## SEMMLINGER CELLOS - MADE IN GERMANY

CELLO

Semmlinger cellos have earned a global reputation for fine quality workmanship and tone. Located in Baiersdorf, Germany, Lothar Semmlinger founded his workshop in 1980, and his sons Stefan (also a geigenbaumeister) and Christian joined him in 2001 and 2005, respectively. They work together to create professional level instruments using well-seasoned tonewoods, a beautiful gold-brown spirit varnish, and an uncompromising dedication to their craft in every detail. These cellos are built for the dedicated musicians who will enjoy incredible tonal qualities that mature into unique characteristics with time.

## MADE IN GERMANY



SEM132



SEM133A

Item #	Description	\$-List
<b>SEM132</b> <b>Cello</b>	Straight-grain aged tone woods, Red-brown color shaded spirit varnish, Ebony fittings, Aubert "Luxe" bridge, Wittner tailpiece, adjusted with Evah Pirazzi strings. 4/4 size.	10,095.00
<b>SEM133A</b> <b>Cello</b>	Higher grade well-aged tone woods, Golden-brown mildly antiqued spirit varnish, Ebony fittings, Aubert "Luxe" bridge, Wittner tailpiece, adjusted with Pirastro Perpetual Edition strings. 4/4 size.	11,350.00





SEMMLINGER CELLOS - MADE IN GERMANY

CELLO



MADE IN GERMANY

Item #	Description	\$-List
SEM134 Cello	Nicely flamed well-aged tone woods, Warm, golden-brown varnish mildly color shaded, Ebony fittings, Aubert "Luxe" bridge, Wittner tailpiece, adjusted with Pirastro Perpetual Edition strings. 4/4 size.	15,570.00



**HEFFLER CELLOS**

Each instrument is hand-varnished so there is a natural, organic variety to the color, ranging from warm amber to golden brown and golden yellow. Heffler's oil varnish shows off a gorgeous depth of color complexity with subtle shading, polished to a medium-high luster and highlighting some raised grain in the spruce, and the remarkably figured maple.

Whether for a serious student, amateur, or professional player, these instruments deliver something special!



**Made in Germany**



**HEFF-60-2**



**HEFF-60-4**

Item #	Description	\$-List
<b>HEFF-60-2</b> <b>Cello</b>	European tonewoods, ebony fingerboard, nut and saddle. Ebony Swiss pegs, endpin, Aubert "Luxe" French bridge, Akusticus tailpiece, Pirastro Perpetual Edition strings.	15,840.00
<b>HEFF-60-4</b> <b>Cello</b>	European tonewoods, ebony fingerboard, nut and saddle. Ebony Parisian eye pegs, endpin, Aubert "De-Luxe" French bridge, Akusticus tailpiece, Pirastro Perpetual Edition strings.	16,895.00





## HEFFLER CELLOS



Made in Germany

INSTRUMENTS



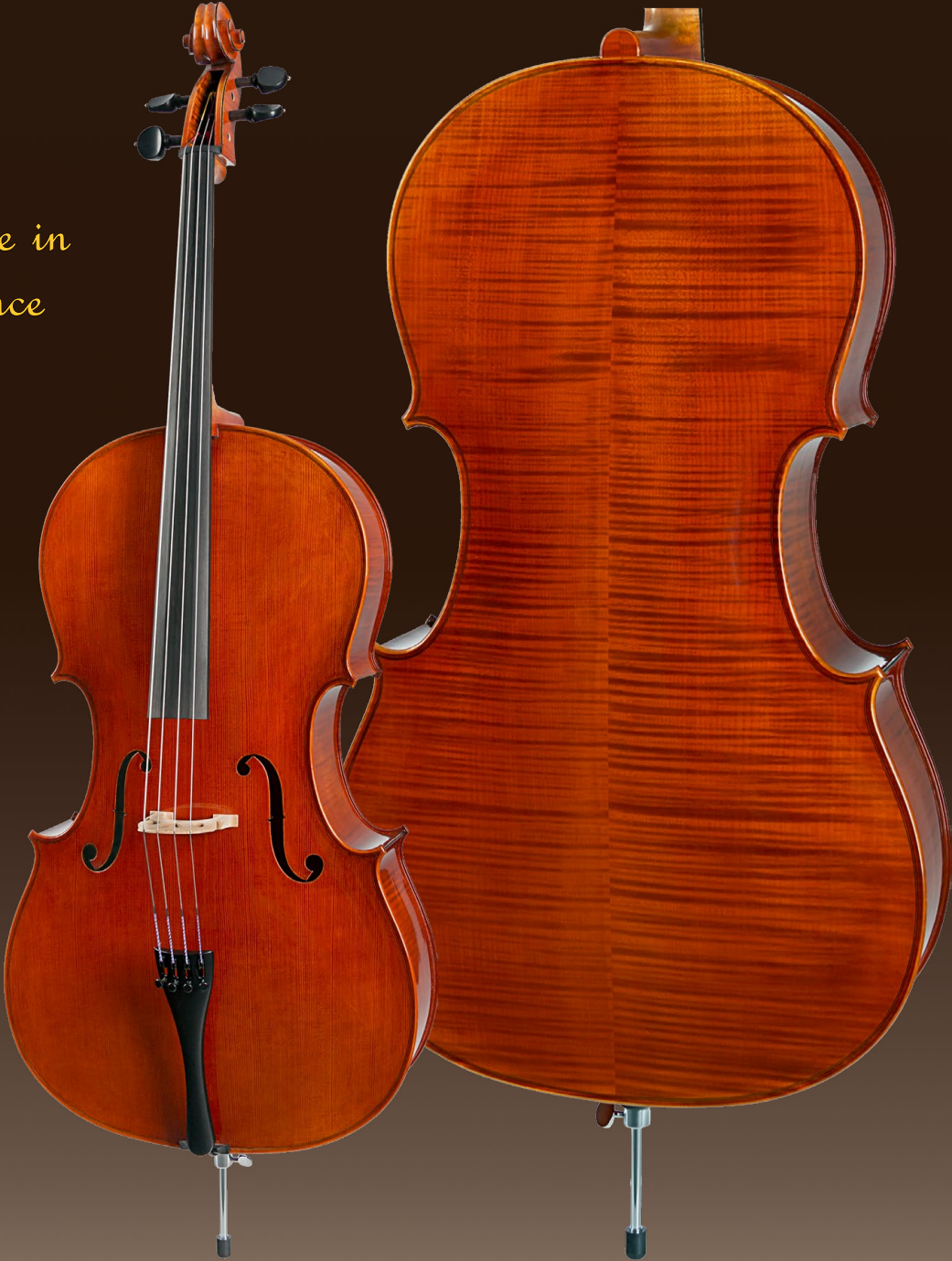
Item #	Description	\$-List
<b>HEFF-70-2</b> <b>Cello</b>	European tonewoods highest-grade, ebony fingerboard, nut and saddle. Ebony Parisian eye pegs, endpin, Aubert "DeLuxe" Belgian bridge, Akusticus tailpiece, Pirastro Perpetual Edition strings.	21,095.00

CELO

AUBERT LUTHERIE      *Maker Adjusted*

The legendary name “Aubert” is recognized by every luthier and repairperson, and represents a tradition of excellence for quality French bridges. Since 1864, Aubert has earned this reputation based on their expertise in wood selection, careful aging process, and precise workmanship. This has been the same foundation for the Aubert Lutherie, a small group of French violin-makers in Mirecourt that joined Aubert in the 1980s, who use only the finest European tonewoods to craft instruments worthy of professional musicians throughout the world.

Made in  
France



Item #	Description	List
AL6030C-VUILLAUME	Aubert Lutherie’s “Vuillaume” model cello celebrates the early works of the master French maker Jean Baptiste Vuillaume with the strong red-brown varnish colors on this exquisite copy. J.B. Vuillaume’s contribution to the violin industry is arguably one of the most influential in its grand history. His studies on the Italian masters’ collection he purchased from the Tarisio estate alone, solidified his position in history, not to mention his pure fascination with the Messiah and the Cannon, which drove him to become a master maker in his own right. This faithful copy manufactured entirely in Mirecourt, France is a great example of the rich tradition of French violinmaking.	21,920.00





AUBERT LUTHERIE

Made in  
France

CELLO



Item #	Description	List
<b>AL7030C-DELANGE</b>	The Aubert Lutherie selects their best aged tonewood for the “Christophe Delange” model. Extra care and effort go into the delicate handcrafting of the arching and plate graduation to produce an especially elegant model. The rich, spirit varnish is a golden brown color, yet transparent to allow the exceptional maple and spruce to come alive through its refractive ground coat. The sophisticated tonal qualities and full-bodied projection are ideal for the professional repertoire. Each instrument has been adjusted by the maker using fine ebony fittings, a beautifully cut Aubert Deluxe bridge, and Corelli strings. Additionally, each instrument comes with a Maker’s Certificate.	23,650.00

CELLO

BIEG CELLOS

The premium quality of the tonewoods and craftsmanship are immediately evident in the M.F. Bieg Orchestra model: the tonal palette is rich and expansive, the response instantaneous to the cellist's every impulse, and the visual beauty is striking. The European spruce top is carefully selected to match the European maple back and sides which are attractively flamed, and then hand carved for exceptional acoustics. The antique style finish is an elegant orange-brown spirit varnish over a golden ground.



BIEG-VC-ORCH-GOFRILLER



BIEG-VC-ORCH-MONTAGNANA

Item #	Description	\$-List
<b>BIEG-VC-ORCH-GOFRILLER</b> Cello	The Orchestra Gofriller model features upper bouts that are slightly narrower to facilitate playing in higher positions, while still retaining a powerful, soloistic voice flexible for all styles of performance. The European spruce top is carefully selected to match the European maple back and sides which are attractively flamed, and then hand carved for exceptional acoustics. The antique style finish is an elegant orange-brown spirit varnish over a golden ground. USA setup with ebony Parisian eye pegs, Despiau A-level Belgian style bridge, Akustikus tailpiece, and Larsen II Cannone strings. 4/4 size.	32,760.00
<b>BIEG-VC-ORCH-MONTAGNANA</b> Cello	The Orchestra Montagnana model is a tribute to the great Venetian maker, whose wide pattern is known throughout the world for a full depth of tone in the lower registers, balanced by a rich, colorful range in the upper registers, and favored by many soloists. USA setup like above.	32,760.00





## BIEG CELLOS

CELLO



BIEG-VC-ORCH-STRAD



BIEG-VC-ORCH-STRAD-POP



BIEG-VC-ORCH-GUAR

Item #	Description	\$-List
<b>BIEG-VC-ORCH-STRAD</b> Cello	The Orchestra Stradivari model is an homage to the distinguished Cremonese maker, whose classic patterns are still the biggest influence on contemporary makers globally. The tone quality is luxurious and refined, with a wide dynamic range and powerful projection capable of the most demanding professional repertoire. USA setup with ebony Parisian eye pegs, Despiau A-level Belgian style bridge, Akustikus tailpiece, and Larsen II Cannone strings. 4/4 size.	32,760.00
<b>BIEG-VC-ORCH-STRAD-POP</b> Cello	The dimensional twin of the maple-backed Stradivari model, the back and sides on the Strad-Pop are now crafted from beautiful poplar. This change produces an earthier, more textural tonal character while retaining power and projection. USA setup like above.	32,760.00
<b>BIEG-VC-ORCH-GUAR</b> Cello	The Orchestra Guarneri features a powerful, robust outline, producing rich fundamentals and a bass register capable of anchoring any ensemble. The tone quality is noble and complex, equally happy in an orchestral, chamber, or solo setting. USA setup like above.	32,760.00

**BIEG CELLOS**

CELLO

**BIEG-VC-WSP-  
DAVIDOFF****BIEG-VC-W-STRAD**

Item #	Description	\$-List
<b>BIEG-VC-WSP- DAVIDOFF Cello</b>	The M.F. Bieg Workshop Special model cello is based on the "Davidoff" Stradivari, the original having been played Jacqueline du Pré and now Yo-Yo Ma. This B-form Stradivari pattern continues to be one of the most favored over the last two hundred years, and this Bieg Workshop Special Davidoff model exemplifies fine German craftsmanship and artistry. The European tonewoods, well-aged, are meticulously finished with a rich orange-brown spirit varnish over a golden ground, enhancing the natural figure of the spruce top and beautifully flamed maple back and sides. USA setup with ebony Parisian eye pegs, Despiau A-level Belgian style bridge, Wittner Ultra tailpiece, Thomastik Rondo A&D and Spirocore Tungsten G&C strings. 4/4 size	26,690.00
<b>BIEG-VC-W- STRAD Cello</b>	Handcrafted in Germany, the M.F. Bieg Workshop cello is based on the esteemed Stradivari model, and exemplifies superior craftsmanship and artistry. The European tonewoods, aged carefully, are finished with a refined golden-brown spirit varnish, giving a lustrous appearance to the spruce top and nicely flamed maple back and sides. USA setup with ebony Parisian eye pegs, Despiau A-level Belgian style bridge, Wittner Ultra tailpiece, Thomastik Rondo A&D and Spirocore Tungsten G&C strings. 4/4 size.	23,060.00

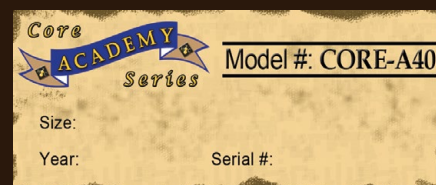




***THIS PAGE INTENTIONALLY BLANK***



# Core ACADEMY Series



Start your customers off on the right track! Help beginning players get excited about string instruments, and give budget-conscious customers a worthwhile option. The Core Academy line represents solid craftsmanship and materials, proper setup, and good tone production, all at a value price.

The A40 model has a proven track record for dependable quality and maximum value. With fierce competition in the global marketplace, there is always temptation to take shortcuts, but what is sacrificed? What is the line between proper construction and a poor imitation? With the A40 model we have established a basic standard, subjecting it to extensive testing and incredible scrutiny. This standard has been embraced nationwide as a solid, dependable choice.



*Core Academy Bass Basic Outfit includes our CC485 padded cover, 1076DB French model bow, microfiber polishing cloth, and rosin.*

Item #	Description	List	MAP
<b>CORE-A40</b>	Core Academy student quality bass. Fully laminated with ebony fingerboard, nut & saddle, and inlaid purfling. Tuning machines, tailpiece, endpin, maple bridge with height-adjusting wheels, and steel strings. 3/4, 1/2, 1/4 & 1/8 sizes available.	3,225.00	2,419.30 bass only
<b>Bass</b>		3,695.00	2,772.95 outfit
<b>FULLY LAMINATED</b>			





# Core ACADEMY Series

Get the best of both worlds with the durability of laminated maple back and sides, and the improved acoustic response of solid carved spruce top. The A43 "hybrid" model features both! The laminated back and sides are especially sturdy in school settings and drier climates, while the carved spruce top gives players a wider range of tone and expression.

BASS



Core Academy Bass Basic Outfit includes our CC485 padded cover, 1076DB French model bow, microfiber polishing cloth, and rosin.

Item #	Description	List	MAP	
<b>CORE-A41</b>	Quality workmanship and properly dimensioned, adjusted in our U.S. workshops. Featuring a pleasing shaded yellow-amber finish. Student quality bass, fully laminated with ebony fingerboard, nut & saddle, and inlaid purfling. Tuning machines, tailpiece, endpin, maple bridge with height-adjusting wheels and steel strings. 3/4, 1/2, 1/4 & 1/8 sizes available.	3,310.00	2,484.00	bass only
<b>Bass</b>		3,790.00	2,841.95	outfit
<b>FULLY LAMINATED</b>				

# Core ACADEMY Series

Get the best of both worlds with the durability of laminated maple back and sides, and the improved acoustic response of solid carved spruce top. The A43 "hybrid" model features both! The laminated back and sides are especially sturdy in school settings and drier climates, while the carved spruce top gives players a wider range of tone and expression.



**HYBRID DESIGN**  
Fully carved top with  
laminated back and sides



Core Academy Bass Basic Outfit includes our CC485 padded cover, 1076DB French model bow, microfiber polishing cloth, and rosin.

Item #	Description	List	MAP
<b>CORE-A43</b>	Better student quality bass. Hybrid, carved spruce top, laminated back & sides with ebony fingerboard, nut & saddle, and inlaid purfling. Tuning machines, tailpiece, endpin, maple bridge with height-adjusting wheels and steel strings. 3/4 & 1/2 sizes available.	3,680.00	2,760.00 bass only
<b>Bass</b>		4,145.00	3,109.30 outfit
<b>HYBRID</b>			







Due to mishaps that sometimes occur during shipping, Howard Core Company often has various 2nd and 3rd quality instruments available for sale at a significant discount. With repair, many of these instruments can be fine additions to your store inventory!

Please call for current availability and pricing, or visit  
[www.howardcore.com/Dealers/coreclearancecorner/](http://www.howardcore.com/Dealers/coreclearancecorner/)



BASS

Core  
ACADEMY  
Series

All prices include  
our U.S. adjustment



Core Academy Bass Basic Outfit includes our CC485 padded cover, 1076DB French model bow, microfiber polishing cloth, and rosin.

Item #	Description	List	MAP	
CORE-A44 Bass CARVED TOP & BACK	Expand your musical horizons with a solid, carved bass. Requiring more care in handling than a laminate, the enhanced tone quality of the A44 model can be well worth it for dedicated students. Solid, carved tonewoods for the top and back plates allow for more freedom of vibration and resonance. Plainer maple is used for economy, but the stable build-quality gives players perennial consistency when cared for with proper humidification and maintenance. Laminated maple sides for extra durability. Equipped with D'Addario Prelude strings. 3/4 and 1/2 sizes available.	4,700.00	3,523.30	bass only
		5,165.00	3,872.60	outfit





# Core ACADEMY Series

All prices include  
our U.S. adjustment

BASS



Core Academy Bass Basic Outfit includes our CC485 padded cover, 1076DB French model bow, microfiber polishing cloth, and rosin.

Item #	Description	List	MAP	
<b>CORE-A45</b>	The star pupil of the Core Academy series: the all new A45 model has been earning top marks since its re-introduction and it's no surprise. This head of the class features improved arching and graduation, and an aesthetically pleasing matte-finish. Fully carved spruce top and moderately-flamed maple back, with laminated maple sides for extra durability. Hard work and careful study habits pay off with quality tone, long sustain, easy playability and quick response that will pass any test with flying colors. Equipped with D'Addario Helicore strings. 3/4, 1/2 and 1/4 sizes available.	5,580.00	4,183.15	bass only
<b>Bass</b>		6,045.00	4,532.45	outfit
<b>CARVED TOP &amp; BACK</b>				

# Core ACADEMY Series

*All prices include  
our U.S. adjustment*



*Outfit includes CC485 padded cover  
(no bow, no rosin).*

Item #	Description	List	MAP	
<b>CORE-A40</b>	Everyone likes a sharp-dressed bass. With the tuxedo-style black finish and white pinstripe outlines on the CORE-A40 body, this stylish bass looks good on any stage.	3,680.00	2,760.00	bass only
<b>Bass - Black</b>	Whether you play jazz, swing, bluegrass, or rockabilly, the fully laminated body will survive any gig, and the Rotosound strings are perfect for pizz and happy to slap. With a lowdown sound, it's more than just a pretty bass. 3/4 size only.	4,145.00	3,109.30	outfit
<b>FULLY LAMINATED</b>				





## CORE SELECT BASSES

**Artisanal. Small-batch. Boutique.** Usually such adjectives are associated with premium prices in the American market. However, these traits can still be found in competitively priced instruments from our Core Select Series.

The Core Select master makers have often trained in Europe or America, and many have earned awards and medals in various global competitions. Their skill and talent is world-class. Their assistants learn the finer aspects of the craft by working alongside the master over years and years. Like anything made by hand, it's not a quick process, and to do it well takes long-term commitment and patience.

Quantities are limited, but if you have customers requiring very fine instruments you owe it to yourselves and them to have at least one of these on hand as they will represent the finest available in their price ranges. There may also be an opportunity to be an exclusive agent for certain makers in your geographic area.



### CS2600B

An excellent choice for a fully laminated bass with high quality workmanship, the CS2600B model is made in lower volumes with extra attention to detail. Fully laminated spruce and maple veneer. Aged maple neck. Ebony fingerboard, nut, saddle, endpin, good quality maple bridge with height-adjusting wheels and ebony tailpiece. Chrome steel strings. **1/2 size only.** Basic Outfit includes our CC485 padded cover, 1076DB French model bow, microfiber polishing cloth, and rosin.

List \$ 4,260.00 bass only

MAP \$ 3,195.55 bass only

List \$ 4,725.00 outfit

MAP \$ 3,544.85 outfit



BASS

# Core Conservatory Bass

The Core Conservatory instruments help musicians take their playing to the next level. Practicing, lessons, and rehearsals require a student's commitment, and these instruments reward the extra efforts with greater range of tone and dynamics. The luthiers spend more time in carving and shaping the plates for improved acoustic response. These and other subtle details signify better overall workmanship which make a big difference and help the players' musical education flourish.

Core Conservatory

Model

Year

Serial No.

Size

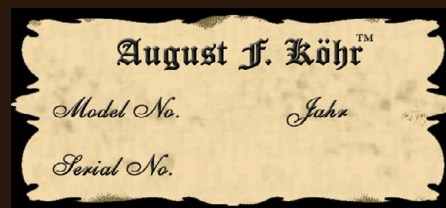


All prices include our U.S. adjustment

Item #	Description	List	MAP
CORE-C42 Bass FULLY CARVED	Core Conservatory model 42 advancing-level bass. Fully carved spruce top, maple back and sides, aged. Includes endpin and maple bridge with height-adjusting wheels. Adjusted with D'Addario Helicore strings. The Core Conservatory instruments help musicians take their playing to the next level. Practicing, lessons, and rehearsals require a student's commitment, and these instruments reward the extra efforts with greater range of tone and dynamics. The luthiers spend more time in carving and shaping the plates for improved acoustic response. These and other subtle details signify better overall workmanship which make a big difference and help the players' musical education flourish. 3/4, 1/2 & 1/4 sizes available.	6,865.00	5,149.15



**AUGUST F. KÖHR BASSES FOR THE ADVANCING PLAYER**



BASS



**K500B**

**K500B**  
**Bass**  
**FULLY**  
**CARVED**

A visually stunning bass that shines bright under the showroom lights. The glossy, rich orange-brown finish is transparent for an attractive appearance. This is fully carved, with flamed well-aged maple back and sides, and a choice spruce top. It is fully handmade, hand-graduated and hand-varnished. This bass looks and sounds like German basses costing two and three times as much! Even tone throughout, with good sonority - fine sound! If you disregarded the price, you would consider this a master art instrument! Adjusted with D'Addario Helicore strings, endpin, ebony tailpiece and maple bridge with height-adjusting wheels. 3/4 only.

List	9,025.00
MAP	6,769.70

**K500BP**  
**Bass**  
**FULLY**  
**CARVED**

The August F. Köhr K500BP model is fully carved with plain well-aged maple back and sides, and a choice spruce top. Good, even tonal quality; plenty of resonance throughout, with fine sound projection. The glossy, rich orange-brown finish is transparent for an attractive appearance. Adjusted with D'Addario Helicore strings and good quality maple bridge with adjustable wheels. 3/4, 1/2, 1/4, & 1/8 sizes.

List	7,575.00
MAP	5,680.85

BASS

# Core Symphony Bass

Take the stage confidently with the Core Symphony model. Built for performance, it has style, power, and the versatility required for orchestral, solo, and chamber music, even contemporary genres.

This model features a well-seasoned spruce top and nicely flamed maple back and sides, all fully carved and aged 5 years! Combined with experienced craftsmanship, the resulting tonal qualities are well-balanced, with both clarity and warmth, refinement and power. From the overture to the final encore, the Core Symphony gives an amazing performance.

Core Symphony

Model

Year

Serial No.



All prices include our U.S. adjustment

Item #	Description	List	MAP
CORE SM42 Bass	Core Symphony model 42 concert level bass. Built for performance, this model features a well-seasoned spruce top and nicely flamed maple back and sides, all fully carved of well-aged tone-woods, antiqued finish. Combined with experienced craftsmanship, the resulting tonal qualities are well-balanced, with both clarity and warmth, refinement and power. From the overture to the final encore, the Core Symphony gives an amazing performance. Includes endpin and maple bridge with height-adjusting wheels. Adjusted with Pirastro Obligato strings. 3/4 & 1/2 size.	9,235.00	6,925.85



**CS7300B**

Core Select solo level bass, 3/4 size. Fully carved of well-aged wood, flamed back and sides, special antiqued finish. Instrument only. Professionally adjusted and set up with Pirastro Perpetual strings.

Item # CS7300B-2ADJ

List \$ 10,625.00

MAP \$ 7,969.50



*All prices include  
our U.S. adjustment*



ROMANIAN BASSES

The Romanian series offers well-made European instruments at affordable prices. With access to locally-grown tonewoods and an efficient workshop setting, the production costs of these models are kept as economical as possible.

*All prices include  
our U.S. adjustment*



KR03B

Item #	Description	\$-List
<b>KR03B</b> Bass	Student quality fully laminated bass. Equipped with D'Addario Prelude strings. Available in 3/4 and 1/2 sizes.	5,030.00





ROMANIAN BASSES

BASS



KR08B

Item #	Description	\$-List
<b>KR08B</b> Bass	Better quality hybrid bass with solid top and laminated back and sides. Equipped with D'Addario Helicore strings. Available in 3/4 and 1/2 sizes.	5,645.00



ROMANIAN BASSES

BASS



Item #	Description	\$-List
<b>KR10B</b> Bass	Student quality bass. Solid, flat back, lightly-flamed maple, good spruce top. Adjusted with D'Addario Helicore strings, endpin, ebony tailpiece and maple bridge with height-adjusting wheels. 3/4 & 1/2 sizes available.	8,700.00



## ROMANIAN BASSES

BASS



Quality bridge with  
built-in adjustable  
wheels!

Item #	Description	\$-List
<b>KR20B</b> <b>Bass</b>	Advanced Romanian bass, fully carved with Carpathian medium grain spruce top and flamed arched maple back, ribs and neck. Adjusted with Pirastro Flexocor Deluxe strings, endpin, ebony tailpiece and maple bridge. 3/4 size.	15,410.00

**HÖFNER BASS****HOF-5-7**

Handcrafted from select European tonewoods, the Höfner 5-7 series bass embodies the centuries-old German tradition of violin-, cello-, and bass-makers, passed down from masters to apprentices, from one generation to the next. Using time-honored techniques since their founding in 1887, the Höfner workshop under the guidance of a master maker, produce these basses with quick response, full-bodied tone, and clear projection. Finished with a beautiful warm-brown varnish, moderately antiqued in homage to the rich history of Höfner's beginnings in Schönbach. Fully carved spruce and maple are complimented with ebony fingerboard and tailpiece, Rubner machines, Teller bridge with classic brass height adjusters, ebony and steel endpin. Professionally adjusted with Pirastro Obligato strings.

List \$ 22,380.00

*Höfner*  
seit 1887

Made in Germany





**ARTINO CARBON FIBER VIOLIN****VN-CF100**

Artino carbon-fiber violin, 4/4. Traditional design and weather-resistant carbon-fiber combine to produce an exciting and dynamically rich tone. Factory adjusted with ebony fingerboard, ebony pegs, Aubert Mirecourt bridge, and Larsen Virtuoso strings.

List \$ 2,720.00

MAP \$ 1,200.00





## GLASSER CARBON COMPOSITE INSTRUMENTS

Revolutionary new instruments from Glasser Bows, the world leader in developing musical products with the use of composite materials. Glasser Carbon Composite instruments are the latest development. Built to last, they look and sound great. Glasser's patent pending design makes for an instrument with a wonderful tonal quality with durability most instruments will never match. Adjusted with Larsen strings and planetary-geared pegs.



Item #	Description	NET
GLASSER-CCVNO-1	Violin outfit, 4/4	899.00
GLASSER-CCVNO-5STRING	Violin outfit, 4/4, 5-string	979.00
GLASSER-CCVA-12	Viola 12".	900.00
GLASSER-CCVA-13	Viola 13".	900.00
GLASSER-CCVA-14	Viola 14".	954.00
GLASSER-CCVA-15	Viola 15".	954.00
GLASSER-CCVA-15.5	Viola 15.5".	973.00
GLASSER-CCVA-16	Viola 16".	1,071.00
GLASSER-CCVA-16.5	Viola 16.5".	1,078.00
GLASSER-CCVC-1	Cello 4/4.	3,893.00
GLASSER-CCVC-5STRING	Cello 5-String. 4/4.	4,359.00



GLASSER-CCVNO-1





# GLASSER AE & AEX ACOUSTIC/ELECTRIC VIOLINS

## AE MODELS



GLASSER ★ NY<sup>®</sup>

## AEX MODELS



Item #	Description	NET	MAP
GLASSER-CCAENV	Available colors: blue, green, orange, pink, purple, and red.	1,280.00	1,650.00
GLASSER-CCAENV-5STG	5-string model, same colors as above.	1,342.00	2,040.00
GLASSER-CCAEXVN	Available colors: black, blue, green, gunmetal, pink (not pictured), purple, red, silver, and white.	1,050.00	1,350.00
GLASSER-CCAEXVN-5STG	5-string model, same colors as above.	1,152.00	1,485.00

## STINGRAY & STINGRAY OUTFIT

Based on the popular Custom Stingray model, the SVX4 and SVX5 are a 4-string and 5-string fretless electric violins that come complete with case. Feather-light and fabulous looking, they sound great as well!

The Stingray SVX4 & SVX5 outfits include the instrument adjusted and ready-to-play, and shaped case with exterior music pocket, two bowholders, accessory pocket and backpack straps!



*Featuring lightweight bodies combined with Wood Tru-Tone pickup for enhanced dynamics, warmth, and uncompromised clarity.*



WV-SVX5-R

Item #	Description	\$-List	\$-MAP
WV-SVX4-BK	Stingray outfit, with black 4-string Stingray.	1,244.00	829.00
WV-SVX4-R	Stingray outfit, with red 4-string Stingray.	1,244.00	829.00
WV-SVX5-BK	Stingray outfit, with black 5-string Stingray.	1,319.00	879.00
WV-SVX5-R	Stingray outfit, with red 5-string Stingray.	1,319.00	879.00





## WOOD AMPLIFIER & WAH PEDAL

The **WV-A-10D Wood dedicated electric violin amplifier**, customized and developed by Mark Wood, is perfect for practice or performance. This custom-voiced amp features 2-band EQ with bass & treble control, a distortion channel (that goes to 11!), variable delay with level control, and a headphone output.

Amplifier Size: (W)10" x (H)11" x (L)7"

Weight: 12 lbs.

Speaker: 7"

110V



WV-WWP-1



WV-A-10D

Item #	Description	\$-List	\$-MAP
WV-A-10D	Wood Electric Violin Amplifier	261.83	179.00
WV-WWP-1	Wood Wah-Wah Pedal	209.11	123.80

The **WV-WWP-1 Wood Wah Pedal** features a tough, durable metal casing, non-slip rubber footpad, and noise-free switching. This is a great wah-wah pedal!

SEE PAGE E-38 FOR INSTRUMENT CABLES!!

## CUSTOM INSTRUMENTS - SABRE, VIPER, COBRA, & STINGRAY

We supply the full line of Mark Wood electric violins and cellos. To order, please contact one of our Sales Representatives today!



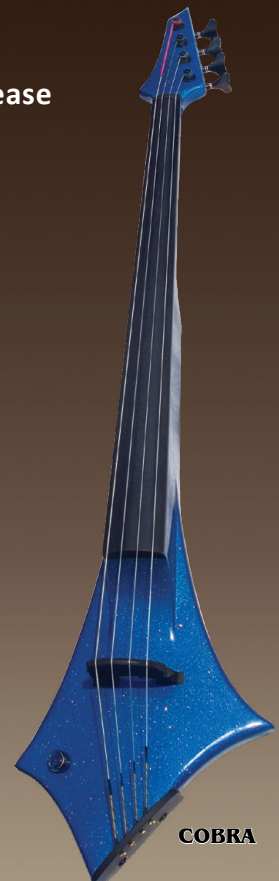
SABRE



STINGRAY



VIPER



COBRA



## HIDERSINE ELECTRIC VIOLINS



### HEV1

The HEV1 electric violin by Hidersine is an excellent option for students who wish to practice in silence, using headphones. However, when plugged into an amplifier, the possibilities are endless. Not only will your electric violin sound like a regular acoustic instrument, but you could plug into your tablet or PC to record, or use third-party software to add countless effects. Supplied as an outfit, the Hidersine HEV1 is complete with a quality bow, and supplied in a rectangular protective case.

Although the Hidersine HEV1 is a modern-looking violin, it is built to the same exacting standards as an acoustic instrument of the same level. The body has a spruce top with maple back and sides. The pegs, fingerboard and chinrest are made of ebony.

Using a Piezo pickup located under the maple bridge of the violin, the Hidersine Electric Violin will reliably capture every nuanced detail of your playing style. On the back of the instrument are the outputs – a 3.5mm jack output and a 3.5mm mini-jack for use with headphones, plus a 3.5mm mic input. The preamp has volume and tone controls. The battery compartment for the preamp is located in the back of the instrument, and this requires a 9v battery to operate.

List \$ 775.00



**HEV2 - AMBER OR BLACK**

Hidersine's HEV2 delivers a fantastic tone when amplified or when using headphones, as it will sound just like a regular violin. However, the fun doesn't stop there. You want to practise without anyone else hearing? No problem, just pop on a pair of headphones or earbuds and play to your hearts content with almost no audible acoustic tone. Want to play loud and proud? Then plug the violin into an amplifier and crank it up. Want to experiment with your sound? Then use some guitar effects pedals or an app on your phone to add effects to your violin playing for awesome results.

The body is made of birch, which helps produce a good resonant tone when amplified. The birch body however has a veneer of flamed maple on the top and back which echoes the look of the hollow maple bodies of acoustic violins. The pegs, fingerboard and chinrest are made of genuine ebony.

Using a Piezo pickup located under the maple bridge of the violin, the Hidersine Electric Violin will reliably capture every nuanced detail of your playing style. On the back of the instrument are the outputs – a 3.5mm jack output and a 3.5mm mini-jack for use with headphones, plus a 3.5mm mic input. The preamp has volume and tone controls. The battery compartment for the preamp is located in the back of the instrument, and this requires a 9v battery to operate.



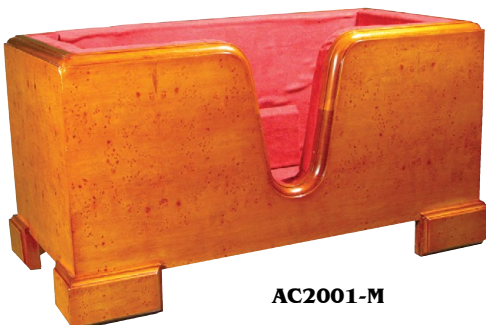
Item #	List
HEV2-AMBER	775.00
HEV2-BLACK	775.00

**VIOLIN & VIOLA DISPLAY CRADLES**

no.	description	\$-LIST
AC2000	Violin display cradle. Wine, green, or blue interior. Please specify when ordering.	161.16
AC2000D-R	Deluxe violin display cradle. Wine interior.	205.13
AC2000M-R	Beautifully figured maple. Wine interior.	293.02
AC2000V-15	Like the AC2000 violin cradle, for 15" violas.	168.50
AC2000V-15.5	Like the AC2000 violin cradle, for 15 1/2" violas.	168.50
AC2000V-16	Like the AC2000 violin cradle, for 16" violas.	168.50
AC2000V-16.5	Like the AC2000 violin cradle, for 16 1/2" violas.	168.50

**AC2000****AC2000D****AC2000M****CELLO & BASS DISPLAY CRADLES**

no.	description	\$-LIST
AC2001-B	Wooden cello cradle with light finish. 4/4 only. Wine, green, or blue interior.	366.28
AC2001	Cello display stand with detailed carving. Wine interior.	439.53
AC2001-MAPLE	Like AC2001B, made of birdseye maple.	586.04
AC2004	Wooden bass stand. Assembly required.	512.79

**AC2001-B****AC2001****AC2001-M****AC2004**

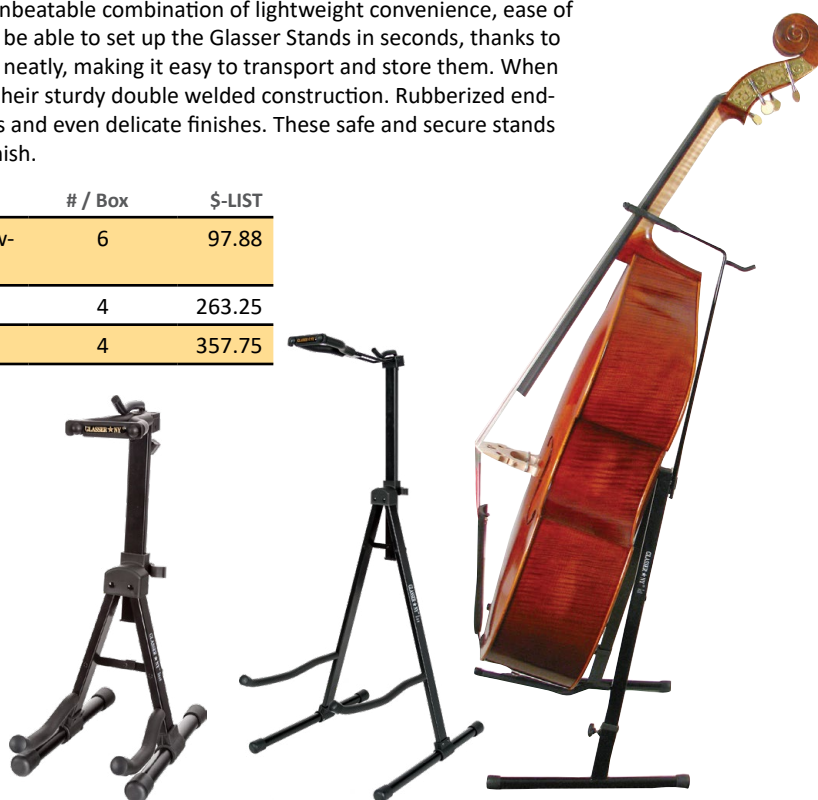


**GLASSER COLLAPSIBLE INSTRUMENT STANDS**

Designed for violins, cellos and bass, these new stands offer an unbeatable combination of lightweight convenience, ease of use, dependable security and attractive appearance. Anyone will be able to set up the Glasser Stands in seconds, thanks to their snap in place design. The stands also fold down quickly and neatly, making it easy to transport and store them. When in use, the stands safely support stringed instruments thanks to their sturdy double welded construction. Rubberized end-caps and soft cushioning on the stands protects instrument necks and even delicate finishes. These safe and secure stands are also eye-pleasing thanks to their attractive black baked-on finish.

no.	description	# / Box	\$-LIST
AC-GVS-100A	Violin / viola collapsible display stand with bow-holder. Also for ukulele.	6	97.88
AC-GCS-101A	Cello collapsible display stand with bowholder.	4	263.25
AC-GBS-102A	Bass collapsible display stand with bowholder.	4	357.75

GLASSER ★ NY<sup>®</sup>

**WALL-MOUNTED HANGERS**

For violin. Instrument hangs by the scroll on protective, rubber-padded swing. Also has bowholder.

no.	description	\$-List
AC-SWING	Wooden mount. Walnut or oak finish available. 4/4-3/4 & 1/2-1/8 sizes available.	34.50
AC-SWING-METAL	Textured metal mount.	34.50
AC-SWING-MIC	Mounts on microphone stand.	32.20

**COLLAPSIBLE INSTRUMENT STANDS**

no.	description	# / Box	\$-List	MAP
AC2002	Collapsible cello stand. NOW SOLD INDIVIDUALLY.	1	75.00	36.00



AC2002

**INGLES INSTRUMENT STANDS**

no.	description	# / Box	\$-NET
AC2010	Violin/viola stand	1	24.99
AC2011	Cello/bass stand	1	78.74



AC2010



AC2011

## UPDATES TO INSTRUMENTS SECTION

PAGE	DATE	EXPLANATION
A111	3-1-2020	CHANGED MAP - GLASSER INSTRUMENT STANDS
A44-45, A78	3-15-2020	PRICE INCREASE - SANDNER INSTRUMENTS
A29	1-27-2021	DISCONTINUED ITEM CS2000-HEIFETZ
A95	2-2-2021	CS2600B - NO LONGER AVAILABLE 1/8 SIZE
MISC	3-1-2021	PRICE INCREASE: ALL INSTRUMENTS EXCEPT GLASSER AND WOOD
A82-A83	7-1-2021	PRICE INCREASE: SEMMLINGER CELLOS
A8-A105	8-1-2021	PRICE INCREASE: ALL INSTRUMENTS
A108	11-4-2021	PRICE INCREASE: MARK WOOD STINGRAY VIOLIN OUTFITS
A8-A9	12-14-2021	DISCONTINUED: CORE-A13/A23
A111	1-1-2022	PRICE INCREASE: GLASSER INSTRUMENT STANDS
A106-107	1-1-2022	PRICE CHANGE: GLASSER INSTRUMENTS
A8-A104	2-1-2022	PRICE CHANGE: ALL INSTRUMENTS (EXCEPT GLASSER)
A-111	2-3-2022	PRICE CHANGE: AC2002
A106	6-16-2022	NEW ITEM: ADDED GLASSER VIOLIN OUTFITS
A111	1-1-2023	PRICE CHANGE: STRING SWINGS
MISC	1-1-2023	ADDED MAP TO CORE INSTRUMENTS
A111	5-1-2023	PRICE INCREASE: GLASSER INSTRUMENT STANDS
A106-A107	5-1-2023	PRICE CHANGE: GLASSER INSTRUMENTS
A44-A45, A78	5-30-2023	PRICE CHANGE: SANDNER INSTRUMENTS
A105	8-17-2023	WILFER BASSES NO LONGER AVAILABLE
A21	9-8-2023	ITEM CS1000: UPDATED IMAGES AND DESCRIPTION
A24, A74	2-1-2024	PRICE CHANGE: CS1350, CS4500C
A52-A54, A86-A87	3-12-2024	PRICE CHANGE: AUBERT LUTHERIE INSTRUMENTS
A80	3-29-2024	NEW ITEM HOF-4-2-VC; REPLACES HOF-8 (NO LONGER AVAILABLE)
A41-A43, A79	4-1-2024	STRUNAL INSTRUMENTS NO LONGER AVAILABLE
A41	4-2-2024	ADDED J. THIBOUVILLE-LAMY VIOLIN
A42	4-2-2024	ADDED HEINRICH GILL VIOLIN
A110-A111	4-2-2024	ADDED HIDERSINE ELECTRIC VIOLINS
A38-A40, A79, A104-A105	5-1-2024	PRICE CHANGE: KR10, KR20, KR30, KR60 MODEL VIOLINS, VIOLAS, CELLOS, & BASSES
A50-A51	5-1-2024	NEW ITEMS: BIEG VIOLINS
A108-A109, A115	5-1-2024	PRICE CHANGE: GLASSER INSTRUMENTS, GLASSER INSTRUMENT STANDS
A46-A49, A82-A83, A106	5-28-2024	PRICE CHANGE: HOFNER INSTRUMENTS
A115	9-12-2024	NEW ITEMS: INGLES INSTRUMENT STANDS
A82	10-8-2024	UPDATED ITEM: HOF-4-2-VC
A110-A111	12-4-2024	UPDATED PRICING: WOOD STINGRAYS AND AMP
A19	1-21-2025	CORE-C12: UPDATED IMAGE
A84-A85	1-21-2025	PRICE UPDATE: SEMMLINGER CELLOS
A50-A51	2-23-2025	PRICE CHANGE: BIEG VIOLINS
MISC.	2-23-2025	PRICE CHANGE: HC600C, HC602, HC622, HC915V, K500, K500B, K500BP, K500V, K500VP, K501, K550, K550V, W400, W401, W500, W600
MISC.	4-21-2025	PRICE CHANGE: ALL CHINA-SOURCED ITEMS
MISC.	5-12-2025	PRICE CHANGE: MOST ITEMS
A111	6-8-2025	PRICE CHANGE: VN-CF100
MISC.	6-12-2025	PRICE REDUCED: HC600C, HC602, HC622, HC915V, K500, K500B, K500BP, K500V, K500VP, K501, K550, K550V, W400, W401, W500, W600
A54-A56, A88-A89	6-16-2025	PRICE CHANGE: AUBERT INSTRUMENTS

